

Thank you for jumping in to help.

2020 will always be remembered for its many pivots, but it's also the year that marks the 10th anniversary of our pivot to become ArtsWave, an organization with a broad and inclusive mandate to fund the arts and fuel our community.

Built on nine decades of cumulative community support amounting to \$350 million, our organization's most recent milestone falls in a year characterized by a global pandemic, unrest and awakenings due to race-related violence and injustice, widespread economic uncertainty, climate crises and more.

In the span of six months, the Cincinnati region experienced the highs of BLINK®, illuminated by ArtsWave, with upwards of 1.5 million people enjoying four days and nights of magical art, light and technological innovation. Then came the unimaginable lows caused by the government shutdown of theaters, concert halls, museums and schools to slow the spread of COVID-19.

As they have done since 1927, ArtsWave's donors in 2020 were key to keeping the lights on for arts and culture, and key to keeping the positive effects of the arts — neighborhood vibrancy and much-needed social connections — rippling throughout the region.

In fiscal year 2020, ArtsWave stewarded and reinvested more than \$10 million in community support to sustain arts organizations and their impact on the vitality of the Cincinnati region. A resilient Campaign Cabinet chaired by Jill McGruder of Western & Southern Financial Group extended our traditional timeframe and adapted to new remote work conditions — including managing 40 virtual employee campaigns between May and August.

ArtsWave initiated several responses to the pandemic, including acceleration of \$2.4 million in grant payments to help ease cash flow pressures for over 40 nonprofit arts organizations. Two rounds of supplemental emergency grants totaling \$300,000 assisted 47 organizations. In addition, bridge loans gave a half-dozen organizations needed breathing room.

Our capacity to convene arts leaders across the community became more important than ever this year. Weekly CEO roundtable meetings among the heads of the largest arts institutions started in early March and haven't stopped; these and other regular check-ins amongst staff across the sector have been an essential place for information-sharing, collaboration, support and strategizing. Online resources related to grant opportunities and federal assistance were created, as were mass communication vehicles to apprise the public of event cancellations and soon, the welcome emergence of virtual arts events.

"In an extraordinary time, ArtsWave commits to doing all we can in support of the arts and to create a more vibrant, healthy and just community."

—James M. Zimmerman
2020 ArtsWave Board Chair

A GROWING WAVE OF SUPPORT ENABLES IMPACT

2010

A new decade begins with a new name, ArtsWave, and a change in focus to the community impact of the arts

2012

ArtsWave transitions to impact-based grantmaking

2015

The ArtsWave **Blueprint for Collective Action** gives arts sector new strategic objectives: driving economic vibrancy and social connection through the arts

2016-2018

Partnership with the Cincinnati USA Regional Tourism Network introduces first Cincy Arts marketing campaigns outside the metro area, driving \$292 million in total cultural tourism revenue

2019

BLINK®, illuminated by ArtsWave attracts 1.5 million people and involves 100 artists, 30 entertainers and 3,200 community participants

POWER OF HER multi-organization initiative led by ArtsWave begins countdown to centennial of women's suffrage

ArtsWave announces Flow, an African American Arts Series, to debut in early 2020 and feature leading Black artists on Cincinnati's premier stages



Bridge Cultural Divides



Deepen Roots



Enliven Neighborhoods



Fuel Creativity & Learning



Put Cincinnati on the Map



ArtsWave staff and volunteers lead the BLINK® 2019 opening parade

To further meet the moment, ArtsWave launched the first phase of an Arts Vibrancy Recovery Fund to raise additional dollars for urgent and emerging COVID-inspired needs. With a 2-to-1, \$2 million challenge from ArtsWave's Board-designated reserve funds, we amassed \$1 million in one-time gifts. The \$3 million fund is addressing four phase-one priorities: sustaining cultural assets, ensuring diversity in the arts ecosystem, encouraging smart restructuring and innovating for a changing future. There's more to do.

With the help of generous individuals, businesses and foundations, ArtsWave is enabling the visions of artists to uplift our community. Whether it's reinforcing the importance of physical distancing by funding the #StayHomeStaySafe art-based campaign created by Art on the Street; mindfulness through daily doses of local music paired with meditation via a partnership with The Well, the Cincinnati Symphony Orchestra and the Cincinnati Opera; 500+ street performances through the Street Stage Project, a partnership of 3CDC and the Cincinnati Music Accelerator; or encouraging outdoor arts attendance through added concerts by It's Commonly Jazz and the Findlay Market Music Series, ArtsWave is also directing resources to the independent artists that call our region home.

Long before 2020's national spotlight on systemic racism, ArtsWave was working to increase opportunities for arts organizations of color and build greater engagement in arts related to the Black experience, in particular. This fiscal year we reached a new high of investment in Black arts organizations and artists — \$730,000. This includes the January launch of a new grants program for African American Arts that funded 18 organizations; artist fees paid to the creators of Cincinnati's Black Lives Matter mural; underwriting for "Black Excellence in Zone 15," a mural in Lincoln Heights; and partnership with P&G's Cincinnati Music Festival to create an Outdoor Museum featuring local Black and Brown artists. It also includes ArtsWave's debut of Flow, an African American Arts series, which promises to engage a diverse audience for years to come.

Finally, ArtsWave salutes the POWER OF HER — another initiative made possible by donors and showcasing the programs of more than 100 arts partners. In a new book which links our past history with our current assets and leaders, we celebrate women who have shaped Cincinnati's arts landscape. We move resolutely into 2021 with a renewed commitment to equality, equity and inclusion, within and through the arts.

With sincere appreciation,



Alecia

Alecia Kintner
President & CEO
ArtsWave

...AND MEANINGFUL RESPONSE

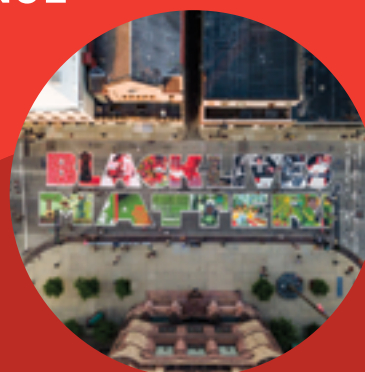
2020

ArtsWave Community Campaign raises \$10.8 million from 27,000 donors during COVID-19

ArtsWave launches \$3 million Arts Vibrancy Recovery Fund and public challenge to provide a path to restarting the arts

ArtsWave responds with emergency relief funds, accelerated grants, innovation funds, loans and other forms of assistance

"Lifting As We Learn" diversity, equity, inclusion and access plan is adopted, with key performance indicators for ArtsWave and the arts sector



The new Black Lives Matter mural in downtown Cincinnati
Photo credit: Empower



Artists create an outdoor museum in Washington Park during the Cincinnati Music Festival, presented by P&G
Photo credit: AGAR



A socially-distanced virtual concert by the Cincinnati Symphony Orchestra
Photo credit: Tyler Secor



Play in the Streets, a community event by Kennedy Heights Arts Center
Photo credit: Will Jones

Our investments this year sustain assets, drive impact, enable action and illuminate these extraordinary times.

Organizations had the opportunity to apply for support to advance ArtsWave's Blueprint for Collective Action in a variety of ways and to seek emergency support as the pandemic disrupted the arts sector. Additional grants and sponsorships were directed by ArtsWave in partnership with donors.



Bridge Cultural Divides



Deepen Roots



Enliven Neighborhoods



Fuel Creativity & Learning



Put Cincinnati on the Map

2019-2020 ARTSWAVE COMMUNITY INVESTMENTS

Arts Bridge Divides and Arts Deepen Roots



In 2020, ArtsWave *tripled* support for Black organizations and artists year-over-year, while continuing to provide grants to deepen roots of young professionals and to advance inclusion through ArtsWave Pride.

African American Arts Grants

Launched as part of the 2020 ArtsWave Campaign in January, this new program focuses on arts organizations led by or primarily serving Black communities. Eligible projects were designed to strengthen organizational capacity or scale ongoing impact. Funding was provided, in part, by Greater Cincinnati Foundation and ArtsWave's Circle of African American Leaders for the Arts.

- | | |
|--|---|
| Art of the Piano | It's Commonly Jazz |
| Artsville | Jazz Alive |
| Avondale Community Arts Program | Juneteenth Cincinnati |
| Bi-Okoto Drum and Dance Theater | Learning Through Art |
| Cincinnati Arts and Technology Studios | PAR-Projects |
| Cincinnati Boychoir | Q-KIDZ Dance Team |
| Cincinnati Music Accelerator | Red Light Jazz Room |
| Elementz | Revolution Dance Theatre |
| | Robert O'Neal Multicultural Arts Center (ROMAC) |

Black Arts Sponsorships

ArtsWave sponsored or facilitated projects showcasing Black artists and leaders:

- Black Art Speaks "Black Lives Matter!" street mural artist commissions
- "Black Excellence in Zone 15" mural in Lincoln Heights
- Cincinnati Music Festival Outdoor Museum
- Eye of the Artists Foundation "Dada Rafiki"
- "Flow, an African American Arts Series" inaugural performances by the Dayton Contemporary Dance Company
- National Instrumentalist Mentoring and Advancement Network (NIMAN)/Cincinnati Symphony Orchestra
- "Ronald K. Brown and Evidence" presented by Contemporary Dance Theater

ArtsWave Pride Grants

Nine organizations with projects advancing inclusion were selected by the ArtsWave Pride steering committee to receive grants from a portion of Pride member gifts.

- | | |
|--------------------------------|----------------------------|
| Basketshop | Contemporary Arts Center |
| Campbell County Public Library | Know Theatre of Cincinnati |
| Cincinnati Men's Chorus | Revolution Dance Theatre |
| Cincinnati Opera | True Theatre |
| Cincinnati Symphony Orchestra | |

ArtsWave Young Professionals (YP) Grants

Six organizations with special projects targeting young professionals were selected by the ArtsWave YP steering committee to receive grants from a portion of their donations.

- | | |
|----------------------------------|---------------------------------------|
| Cincinnati Opera | Taft Museum of Art |
| Cincinnati Playhouse in the Park | Young Professionals Choral Collective |
| Contemporary Arts Center | |
| Over-the-Rhine Museum | |

Arts Enliven Neighborhoods



Arts & Cultural Event Sponsorships

ArtsWave supported independent artists and cultural events — large and small — that brought our community together, in good times and bad. This funding also represented critical support for local creative economy workers whose livelihood was upended by COVID-19.

- 3CDC "Street Stage" (performer fees)
- Art on the Streets "#StayHomeSaveLives" (artist commissions)
- ArtWorks, Wave Pool and The Well, "Camp cARTwheel" (teaching artist fees)
- BLINK® 2019
- Cincinnati Music Accelerator "CMA Mobile Trailer"
- Cincy Nice Social House "513 Anthem" (composer honoraria)
- Findlay Market "Music at the Market" (performer fees)
- National Consortium for Creative Placemaking — Midwest Convening
- Price Hill Will presents Bread and Puppet Theater
- Wave Pool/Contemporary Arts Center "Cincinnati Artist Relief Assistance Fund" (artist support)

Arts & Health Grants

Funding for projects that used the arts to increase health and well-being of community members was provided, in part, by St. Elizabeth Foundation and Anthem Blue Cross Blue Shield Foundation.

Bi-Okoto Drum and Dance Theater
Cincinnati Arts Association

Fourthwall Youth Studios
Melodic Connections
The Well

Arts Fuel Creativity & Learning

With funding from the Stillson Foundation/Fifth Third Bank, Trustee, and others, ArtsWave advanced the goal of fueling creativity and learning through the arts with grants to five organizations.

Cincinnati Arts and Technology Studios
Greater Cincinnati Alliance for Arts Educators
MYCincinnati
NKU Scripps Howard Center for Civic Engagement
Northern Kentucky Cooperative for Educational Services

Arts Put Cincinnati on the Map

Sustaining Impact Grants/Arts Vibrancy Recovery Fund

Every year, ArtsWave donors make possible grants for basic operations of high-impact arts organizations across the region that build the vibrancy and reputation that make Cincinnati unique. Grant amounts are determined by a formula that considers budget size and a score related to ArtsWave's Blueprint. Minimum awards are equivalent to 4% of annual operating revenues; the average award is 7-8% of budgets. This approach gives us a way to make equitable and evidence-based awards.

In 2020, grants were renewed at 2019 levels to avoid further destabilization during the pandemic, following a thorough financial review. Funding was made possible by campaign donors plus supplemental donations to ArtsWave's Arts Vibrancy Recovery Fund designated for the Sustainability of Cincinnati Cultural Assets.

Large Arts Organizations (\$1 million+ in revenues)

- ArtWorks
- Cincinnati Art Museum
- Cincinnati Ballet
- Cincinnati Landmark Productions
- Cincinnati May Festival
- Cincinnati Opera
- Cincinnati Playhouse in the Park
- Cincinnati Shakespeare Company
- Cincinnati Symphony Orchestra
- Contemporary Arts Center
- Ensemble Theatre Cincinnati
- Fitton Center for Creative Arts
- Taft Museum of Art
- The Carnegie
- The Children's Theatre of Cincinnati

- Kennedy Heights Arts Center
- Kentucky Symphony Orchestra
- Know Theatre of Cincinnati
- Manifest Creative Research Gallery and Drawing Center
- Melodic Connections
- Oxford Community Arts Center
- Pyramid Hill Sculpture Park and Museum
- Visionaries + Voices
- Wyoming Fine Arts Center

Small Arts Organizations (<\$300,000 in revenues)

- ArtsConnect
- Collegium Cincinnati
- concert:nova
- Contemporary Dance Theater
- Learning Through Art
- Linton Chamber Music
- Mutual Dance Theatre and Arts Center
- MUSE, Cincinnati's Women's Choir
- My Nose Turns Red Youth Circus
- NrityArpana School of Performing Arts
- Pones
- Vocal Arts Ensemble
- Young Professionals Choral Collective

Midsize Arts Organizations (\$300,000 to \$1 million in revenues)

- Behringer-Crawford Museum
- Bi-Okoto Drum and Dance Theater
- Cincinnati Boychoir
- Cincinnati Chamber Orchestra
- Cincinnati Youth Choir
- Clifton Cultural Arts Center
- Elementz

COVID-19 Emergency Response Grants

In response to COVID-19, ArtsWave provided fast, unrestricted emergency funds for arts organizations with budgets under \$3.5 million that were facing unexpected and drastic loss of income. For many organizations, this represented additional funding from ArtsWave that helped "keep a pilot light on" despite uncertain and radically changed conditions.

| | |
|---|--|
| American Sign Museum | Memorial Hall |
| ArtWorks | Middletown Arts Center |
| Basketshop | Music Resource Center |
| Behringer-Crawford Museum | My Nose Turns Red Youth Circus |
| Bi-Okoto Drum and Dance Theater | National Underground Railroad Freedom Center |
| Cincinnati Arts and Technology Studios | NrityArpana School of Performing Arts |
| Cincinnati Boychoir | Oxford Community Arts Center |
| Cincinnati Chamber Orchestra | PAR-Projects |
| Cincinnati Landmark Productions | Pones |
| Cincinnati Men's Chorus | Price Hill Will |
| Cincinnati Music & Wellness Coalition | Queen City Opera |
| Cincinnati Shakespeare Company | Revolution Dance Theatre |
| Cincinnati Youth Choir | School House Symphony |
| Creative Aging Cincinnati | Sharonville Cultural Arts Center |
| Dearborn Highlands Arts Council | The Carnegie |
| Elementz | The Children's Theatre of Cincinnati |
| Ensemble Theatre Cincinnati | Visionaries + Voices |
| Film Cincinnati | Wave Pool |
| Fitton Center for Creative Arts | The Well |
| Know Theatre of Cincinnati | Woman's Art Club of Cincinnati (The Barn) |
| Learning Through Art | WordPlay Cincy |
| Mutual Dance Theatre and Arts Center | Wyoming Fine Arts Center |
| Manifest Creative Research Gallery and Drawing Center | Young Professionals Choral Collective |
| Melodic Connections | |

Technology Advancement Grants

With funding from the Ohio Valley Foundation/Fifth Third Bank, Trustee and SunTrust, now Truist, ArtsWave made two rounds of investments in technology improvements for local arts organizations this year.

| | |
|---------------------------------|---------------------------------------|
| Bi-Okoto Drum and Dance Theater | Kentucky Symphony Orchestra |
| Cincinnati Boychoir | Learning Through Art |
| Cincinnati Chamber Orchestra | Mutual Dance Theatre and Arts Center |
| Clifton Cultural Arts Center | My Nose Turns Red Youth Circus |
| Creative Aging Cincinnati | PAR-Projects |
| Film Cincinnati | Young Professionals Choral Collective |
| Kennedy Heights Arts Center | |

Innovating for a New Reality

Seven organizations received the first innovation grants from the 2020 Arts Vibrancy Recovery Fund in recognition of their positive responses to COVID-19 challenges in connecting with audiences.

| | |
|-------------------------------|-----------------------------|
| Cincinnati Art Museum | Kennedy Heights Arts Center |
| Cincinnati Symphony Orchestra | Melodic Connections |
| concert:nova | Taft Museum of Art |
| Contemporary Arts Center | |

smART Restructuring

Four organizations received the first smART Restructuring grants from the 2020 Arts Vibrancy Recovery Fund to create greater efficiencies in daily operations.

| | |
|------------------------------|--------------------------------------|
| Cincinnati Boychoir | Contemporary Dance Theater |
| Cincinnati Chamber Orchestra | Mutual Dance Theatre and Arts Center |

Special Thanks

ArtsWave advanced the Blueprint for Collective Action with strategic marketing projects developed by two nonprofit media partners.

| | |
|-----|-------------------------|
| CET | Cincinnati Public Radio |
|-----|-------------------------|

Endowed Awards

Endowed funds held by ArtsWave, established decades ago, enable special awards each year.

| | |
|---|-------------------------------|
| 2020 Kahn Fellowship: Cincinnati Boychoir | 2020 Sachs Award: Carl Solway |
| 2020 Sachs Award: Patricia K. Beggs | |



COVID-19 ARTS VIBRANCY RECOVERY FUND

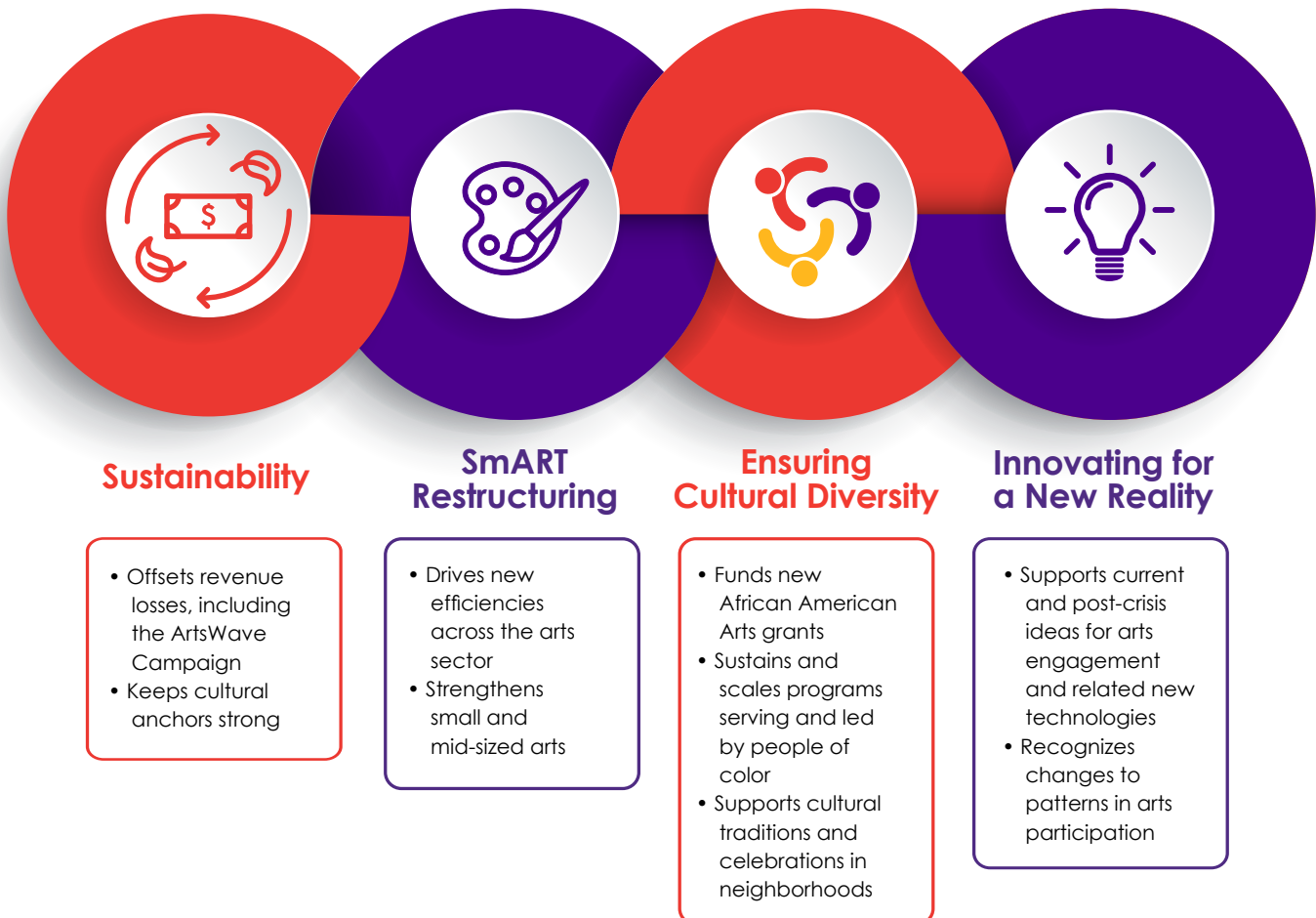
Greater Cincinnati arts organizations have been devastated by the impacts of COVID-19. Using data collected from 60 nonprofit arts organizations, **ArtsWave estimates that \$40 million has been LOST** in ticket revenue, sponsorships and contracts since the early March ban on mass gatherings and school closures.

Like other business sectors, Greater Cincinnati's arts sector is a vital part of the economy. The local nonprofit arts sector — comprised of over 200 small businesses — has an economic impact of more than \$300 million annually and employs 10,000+ people.

Over 4,000 opportunities to engage with the arts have been canceled. 1,750 contracts with performing and teaching artists have been canceled. 400 professionals have been laid off, furloughed or seen their pay reduced. These creative workers in our community typically work multiple jobs, and many are without safety nets. The region's return to vibrancy must include a plan to sustain and restore the arts sector.

2:1 CHALLENGE TO RECOVER ARTS VIBRANCY

To ensure the solvency and vibrant return of our region's arts assets in the wake of this unprecedented crisis, ArtsWave is matching every \$1 contributed to a strategic Arts Recovery Fund with \$2 from board-designated endowment reserves, up to \$2 million. Donations can be designated to four key areas:



Arts Vibrancy Recovery Fund Supporters

Western & Southern Financial Group • Greater Cincinnati Foundation • P&G • PNC Charitable Trust • The Thomas J. Emery Memorial • The H.B., E.W. and F. R. Luther Charitable Foundation, Fifth Third Bank and Narley L. Haley, Co-Trustees • Everything But The House • Fifth Third Foundation • LKC Foundation • Rosenthal Family Foundation • Mr. and Mrs. Thomas L. Williams • William S. Rowe Foundation • Missy and Kerry Byrne • Total Quality Logistics • Mr. and Mrs. Leigh R. Fox • Alison and Jim Zimmerman • WGUC One-Day Intermission Fundraiser • Shannon and Lee Carter* • Kao USA Inc. • Whitney and Phillip Long • Dr. Clifford Pleatman* • David and Karen Hoguet • Miramar Employees • Brixey & Meyer

**Through a fund at the Greater Cincinnati Foundation
Gifts as of August 31, 2020*

We are so grateful to the supporters who have made gifts to the Arts Vibrancy Recovery Fund. To learn more and make a gift to support recovery, visit artswave.org/recovery.

CAMPAIGN RESULTS



2020 Board Chair James M. Zimmerman
Photo provided by Taft Stettinius & Hollister



Members of the 2020 Cabinet at the Campaign kickoff
Photo credit: AmyElisabeth Photography



2020 Campaign Chair Jill McGruder
Photo provided by Western & Southern Financial Group

2020 Leadership

Board of Directors

Officers:

James M. Zimmerman, Chair
Melvin J. Gravely II, Vice Chair
Matthew Stautberg, Treasurer
Andre S. Valentine, Secretary
Alecia T. Kintner, President & CEO

Trustees:

Linda Antus
Ronald T. Bates
Deborah S. Brant †
Laura N. Brunner
Christopher A. Carlson
Eric K. Combs †
Thomas G. DeWitt
Philip Duncan
Dianne Dunkelman
Leigh Fox
Charles H. Gerhardt, III †
Kala Gibson
Trey Grayson
Gerald H. Greene †
Liz Grubow †

Amy Hanson †
Delores Hargrove-Young
Deborah Hayes
Melanie Liddle Healey
Mark Heimboach
Todd M. Immell
Anthony L. Mathis*
Rob McDonald †
Jill McGruder †
Bobbie McTurner †
Jeffrey Meek
Evans N. Nwankwo
Monica J. Posey
R. Michael Prescott*
Jim Price*
Jack Rouse
Rosemary Schlachter †

Megan Shaffer
Murray Sinclair, Jr.
J. Shane Starkey*
Don Stock
Woody Taft †
Teresa Tanner*
Eddie Tyner
George H. Vincent*
Rhonda Whitaker*
Stanford T. Williams, Jr.
Jodi Woffington

Life Trustees:

Otto M. Budig, Jr.
Lee A. Carter
Raymond R. Clark

A. B. Closson, Jr.
Nancy Heffner Donovan
John J. Kron
Susan S. Laffoon
Mitchel D. Livingston
Richard H. Rosenthal
Lisa Sauer
Thomas R. Schiff
Edgar L. Smith, Jr.
Mary Stagaman
Peter S. Strange
Dudley S. Taft
Ellen G. van der Horst

* Executive Committee
† Ex-Officio

2020 Cabinet Members

2020 Campaign

Chair: Jill McGruder, Western & Southern Financial Group
Ed Babbitt, Western & Southern Financial Group
Julie Back, Sibcy Cline
Beverly Bates, P&G
Andrea Behanan, Duke Energy
Chris Brown, Western & Southern Financial Group
Kate Brown, Western & Southern Financial Group
John Bultema, Western & Southern Financial Group

Todd Castellini, The Port
Cari Chandler, St. Elizabeth Medical Center
Kim Chiodi, Western & Southern Financial Group
Shaun Ethier, Empower
Adam Fath, PNC Bank
Kala Gibson, Fifth Third Bank
Trey Grayson, Frost Brown Todd
Chris Habel, Frost Brown Todd
Michelle Hall, Cincinnati Bell

Valerie Holmes, Western & Southern Financial Group
Brad Hunkler, Western & Southern Financial Group
Joy Lytle, Clermont Chamber of Commerce
Christine Meyer, Community Volunteer
Kathy Nardiello, Oracle
De Asa Nichols, Cincinnati Childrens Hospital Medical Center
Julia Poston, EY
Jim Price, Empower

Maribeth Rahe, Ft. Washington Investments
Scott Robertson, RCF Group
Emily Rotella, Fifth Third Bank
Craig Sarembock, Bartlett
Martha Sarra, Kroger
Dave Spaulding, Turner Construction Company

Tom Stapleton, Eagle Realty
Steve Suetholz, Deloitte
Kelly Wittich, UBS
Susan Zaunbrecher, Fifth Third Bank





ArtsWave President & CEO Alecia Kintner at the 2020 Campaign kickoff
Photo credit: AmyElisabeth Photography



The kickoff of the 2020 ArtsWave Campaign
Photo credit: AmyElisabeth Photography

2020 Recognition List

Partner Companies and Foundations

Bold indicates 50% or greater employee participation

Partners
\$2,000,000+
P&G*

\$1,000,000 to \$1,999,999
Fifth Third Bank and the Fifth Third Foundation*

\$500,000 to \$999,999
GE Aviation
Western & Southern Financial Group*

\$250,000 to \$499,999
Cincinnati Bell
PNC*
Greater Cincinnati Foundation*
The Kroger Co.

\$100,000 to \$249,999
The Cincinnati Insurance Companies
Cincinnati Children's Hospital Medical Center
Macy's
Great American Insurance Group
Enquirer Media
The Thomas J. Emery Memorial*
Ohio National Financial Services
The H.B., E.W. and F. R. Luther Charitable Foundation, Fifth Third Bank and Narley L. Haley, Co-Trustees
U.S. Bank
Duke Energy
Cincinnati Business Courier
The E.W. Scripps Company and Scripps Howard Foundation
Cincinnati Reds

Community Champions
\$50,000 to \$99,999
Ameritas
The Daniel and Susan Pfau Foundation
The David C. Herriman Fund of Greater Cincinnati Foundation
Deloitte
Dinsmore & Shohl LLP
Dorothy M.M. Kersten Trust, U.S. Bank Trustee
EY
FC Cincinnati
First Financial Bank
Jacob G. Schmidlapp Trusts, Fifth Third Bank, Trustee
Keating Muething & Klekamp PLL
The Louise Taft Semple Foundation
Messer Construction Co.
North American Properties
TriHealth Inc.
The William O. Purdy, Jr. Fund of The Greater Cincinnati Foundation
Worldpay from FIS

Partner Companies and Foundations, Continued

Leading Supporters \$25,000 to \$49,999

Anonymous
Accenture
AK Steel
Al. Neyer
The Carol Ann and Ralph
V. Haile, Jr./U.S. Bank
Foundation
Chemed Corporation and
Roto-Rooter
The Christ Hospital Health
Network

Cincinnati Art Museum Staff Cincinnati Symphony Orchestra and May Festival Musicians and Staff

Curiosity Advertising

Eleanora CU Alms Trust
Frost Brown Todd LLC
The Harold C. Schott
Foundation

HORAN

LKC Foundation*
National Endowment
for the Arts
Ohio Valley Foundation
Sibcy Cline Realtors
Taft Stettinius & Hollister LLP
Thompson Hine LLP
Total Quality Logistics
TriVersity Construction
Company
University of Cincinnati and
UC Health

Arts Advocates \$10,000 to \$24,999

Akers Packaging
Service Group
ArtsWave Staff
Barnes Dennig
Bartlett Wealth Management
BHDP Architecture
Cincinnati / Northern
Kentucky International
Airport
d.e. Foxx and Associates, Inc.
The David J. Joseph
Company
Dewey's Pizza
Empower
FEG Investment Advisors
GBBN

Gilman Partners

Givaudan Flavors Corp.
Graydon
The Helen G., Henry F., and
Louise Tuechter Dornette
Foundation, Fifth Third
Bank, Trustee

Johnson Investment
Counsel, Inc.

Kao USA Inc.*

Katz Teller

LPK

The Manuel D. and Rhoda
Mayerson Foundation

Mercy Health
Michelman
Miller-Valentine Group
Nielsen
Paycor, Inc.
PLK Communities
Quotient
SHP
Sims-Lohman, Inc.

Spicefire

St. Elizabeth Healthcare
SugarCreek
SunTrust, now Truist
The Sundance Catalog
Towne Properties
Turner Construction
Company

United Way of Greater Cincinnati Staff

VonLehman CPA &
Advisory Firm
William S. Rowe Foundation*
Winegardner & Hammons
Hotel Group
Xtek, Inc.

Cultural Connectors \$5,000 to \$9,999

Anonymous
1919 Investment Counsel
3CDC
84.51°
Anthem Blue Cross
Blue Shield
Bahl & Gaynor
Investment Counsel
BB&T
Chavez Properties
**Cincinnati Arts Association
Staff**
**Cincinnati Ballet Staff &
Dancers**
Cincinnati Opera Staff
**Cincinnati Playhouse in the
Park Staff**

Clark, Schaefer,
Hackett & Co.
Clever Crazes for Kids
Corporex Companies, LLC
Fretboard Brewing Co.
Grant Thornton LLP
HAUSER Serves
Hilltop Basic Resources, Inc.
Huenefeld Memorial Fund B
Huntington
Jack Rouse Associates, Inc.
Jackson Lewis P.C.
JLL
KeyBank

KnowledgeWorks Foundation

Mariner Wealth Advisors
Mayfield Brain & Spine
Megen Construction
Company

MSA Design

Northern Kentucky Chamber
of Commerce

O'Rourke Wrecking
Company
Patheon, part of Thermo
Fisher Scientific

The Port

PricewaterhouseCoopers LLP
ProLink Staffing Services
Pure Romance
RCF Group
Squire Patton Boggs (US) LLP
William H. Albers Foundation

Members \$1,500 to \$4,999

4myBenefits Inc.
Albert Cord Foundation
Americana Arts Foundation
Atkins & Pearce, Inc.
Baird
BakerHostetler
Berry Global
BKD CPAs & Advisors
Brian & Jill Rowe Foundation
Buddy Roger's Music
Calfee, Halter & Griswold LLP
C-Forward, Inc.
CET

Champlin Architecture The Children's Theatre of Cincinnati Staff

Cincinnati and Hamilton
County Public Library
Cincinnati Development
Fund Staff

Cincinnati Landmark Productions Staff & Board

Cincinnati Public Radio Staff
Cincinnati Public School
Employees
Cincinnati State Technical
and Community College
Faculty & Staff
Cincinnati USA Regional
Chamber

Cincinnati Works
City of Cincinnati Employees
CLH Foundation

Contemporary Arts Center Staff

CORE Resources, Inc.
Covington Independent
Public Schools Staff
CTS Construction, Inc.
Cushman & Wakefield
Eco Engineering, Inc.
ETHICON
Forge Lumber
Freestore Foodbank
Game Day Communications
Hamilton County Employees
Harvey C. Hubbell Trust
HCL America
Homan Foundation
Hunt Builders Corporation
I.A.T.S.E. Cincinnati Stage
Employees Local #5

Indian Hill Exempted Village
School District Staff

Interact for Health

John R. Jurgensen Company
The Kleingers Group
LCNB National Bank
Legal Aid Society of
Greater Cincinnati
Lerner, Sampson & Rothfuss
LOTH Holdings
Madison Wealth
Management

MarketVision Research Inc.
MCM CPAs & Advisors
Mellott & Mellott, PLL
Milford Exempted
Village Schools Staff
The Miramar Employees
The Myers Y. Cooper
Company
Park National Bank SW Ohio
& NKY

Prologis
ProMach, Inc.
Raymond James &
Associates
The Shepherd Color
Company

Southwest Ohio Regional
Transit Authority

Starbucks
Stuart Family Foundation
The Summit Country Day
School Staff

Therm-O-Disc
THP Limited Inc.
TIER1 Performance Solutions
Toyota Boshoku America
The Warrington Foundation
Wood Herron & Evans LLP
Xavier University
Faculty & Staff
Members and Friends
of the YMCA

* Includes gift to the Arts
Vibrancy Recovery Fund



WAVE MAKER collaboration beer
with Fretboard Brewing Company
Photo credit: Mitch LaGrow

Friends \$500 to \$1,499

ADM
AGAR
Agave & Rye
American Modern Insurance Group
American Red Cross - Greater Cincinnati Ohio River Valley Chapter Staff
ArtWorks Staff
Beckman Weil Shepardson LLC
Beech Acres Parenting Center
Boy Scouts of America, Dan Beard Council
Bressler & Company, PSC
Burke, Inc.
The Carnegie Staff
Cassady Schiller CPAs & Advisors
Central Bank
Cincinnati Chamber Orchestra

Cincinnati Incorporated Charitable Foundation
Cincinnati Shakespeare Company Staff and Ensemble
Cincinnati Youth Choir Staff & Board
Clermont Chamber of Commerce
Clifton Cultural Arts Center Board & Staff
concert:nova Staff & Board
Crescent Paper Tube Co.
Donovan Energy
Emerson Design LLC
Ensemble Theatre Cincinnati Staff
Fitton Center for Creative Arts Staff & Board
Flynn & Company, Inc.
Girl Scouts of Western Ohio Staff
goDutch
Hamilton County Employees
HCL America
Hawaiian Telcom

Kennedy Heights Arts Center Board & Staff
Kenwood Complete Dentistry
KPMG LLP
KZF Design Inc.
Landor
Legacy Financial Advisors, Inc.
Microsoft
Mount St. Joseph University Faculty & Staff
FRCH Nelson
Neyer Properties, Inc.
Northern Kentucky University Faculty & Staff
Northwestern Mutual
Oxford Community Arts Center Staff & Board
Pro Seniors, Inc.
Q Labs, LLC
Robbins Kelly Patterson & Tucker
The Roselle Foundation
The Shephard Chemical Company

Skyline Chili, Inc.
Stagnaro Distributing
Starboard Strategy
Straight Face Partners, LLC
Taft Museum of Art Staff
Thomas More University Faculty & Staff
TP Mechanical Contractors Traditions Building & Development Group, Inc.
Ulmer & Berne LLP
Urban Sites
USI Insurance
Visionaries + Voices Staff & Board
Vorys, Sater, Seymour and Pease LLP
Wood + Lamping LLP
Woolpert, Inc.
Wyoming Fine Arts Center Faculty & Staff

* Includes gift to the Arts Vibrancy Recovery Fund



Thank you to the inaugural sponsors of our Flow performance series:

Founding Partners

The David C. Herriman Fund of Greater Cincinnati Foundation
Fifth Third Bank
Greater Cincinnati Foundation
P&G
Cincinnati Arts Association
National Endowment for the Arts
Duke Energy
GE
TriVersity Construction Company
The Enquirer/Cincinnati.com
d.e. Foxx & Associates
U.S. Bank

Education Partners

Cincinnati Children's Hospital Medical Center
Clever Crazes for Kids

Media Sponsors

The Enquirer/Cincinnati.com
The Cincinnati Herald
Soul 101.5
100.3 R&B
Easley Blessed Media

Individual Sponsors

Anthony L. Mathis
John and Debra Merchant
Steve and Julie Shifman
Stanford Williams and Kristi Clement Williams
Martine and Renee Dunn

David and Guinette Kirk
Sheilakai Simmons
Albert and Liza Smitherman
Ron Kull and Mary Stagaman
Deana Taylor
Tracey Nowlin
Henry Daniels
Pamela Battle
Melvyn Heard
Kristal Howard
Robert Jones
Antoine Townes
Shawn Warren
Michael Foust
George Williams

Thank you to the sponsors of POWER OF HER and book, "Imagineers • Impresarios • Inventors: Cincinnati's Arts and the Power of Her."

POWER OF HER Sponsors

P&G
Charlotte R. Schmidlapp Fund, Fifth Third Bank, Trustee

Book Sponsors

The Landen Family Foundation
Karen Bowman
The Carol Ann and Ralph V. Haile, Jr./U.S. Bank Foundation
Melanie M. Chavez
Sara M. and Michelle Vance Waddell
The Women's Fund of Greater Cincinnati Foundation



Cover design for "Imagineers • Impresarios • Inventors: Cincinnati's Arts and the Power of Her"

arts wave

Funding Arts. Fueling Community.

2020

Staff

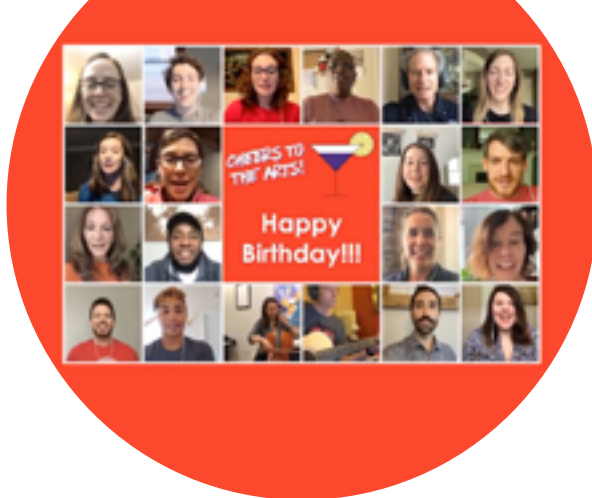
Leadership

- Alecia Kintner,**
President & CEO
- Kate Kennedy,**
Chief Operating Officer
- Samantha Cribbet,**
Vice President, Finance
- Kathy DeBrosse,**
Vice President,
Marketing & Engagement
- Lisa Wolter,**
Vice President, Community
Campaign
- Mary Stagaman,**
Impact Executive in Residence

Staff

- Krista Bondi
- Jonathan Buening
- Lori Burkhardt
- Amanda Carr
- Kristina Crowley
- Devin Davidson
- Andre DuBois
- Tish Eaton
- Janice Liebenberg
- Dennis Lyons
- Danielle Martin
- Amanda McDonald
- Zach Moning
- Katelyn Pounds
- Sue Reichelderfer
- Mary Stagaman
- Joel Staples
- Ryan Strand
- Sylvia Thornton

ArtsWave Staff at the Cheers to the Arts virtual fundraising party.



arts wave pass

Event Deals+

Partners

- | | | | | |
|---|--|---|--|--|
| Alba Organic Beauty Studio & Cincy Organic Stylebar | Cincinnati Arts Association | Cincinnati Pops Orchestra | Fitton Center for Creative Arts | Rooted Juicery & Kitchen |
| American Sign Museum | Cincinnati Ballet | Cincinnati Reds | Frame USA Warehouse Outlet | Sunset Players, Inc. |
| Art Academy of Cincinnati | Cincinnati Black Theatre Company | Cincinnati Shakespeare Company | Gia & The Blooms | Tablespoon Cooking Co. |
| Artichoke OTR | Cincinnati Boychoir | Cincinnati Symphony Orchestra | Holtman's Donuts | Taft Museum of Art |
| ArtWorks | Cincinnati Business Courier | Cincinnati World Cinema | Indigo Hippo | Taste of Belgium |
| The Barn | Cincinnati Contemporary Jazz Orchestra | Cincinnati Youth Choir | Know Theatre of Cincinnati | The Carnegie Visual and Performing Arts Center |
| Behringer-Crawford Museum | Cincinnati Landmark Productions | Cincinnati Zoo & Botanical Garden | Linton Chamber Music | The Children's Theatre of Cincinnati |
| Bi-Okoto | Cincinnati May Festival | Clifton Cultural Arts Center | Macaron Bar | The Mercantile Library |
| Broadway in Cincinnati | Cincinnati Opera | College-Conservatory of Music, University of Cincinnati | MamLuff&Co. Dance | Urban Artifact |
| Cheers to Art | Cincinnati Playhouse in the Park | Contemporary Dance Theater | Manifest Gallery | Visionaries + Voices |
| Cincinnati Art Museum | | Elementz | Matinee Musicale | Vocal Arts Ensemble |
| | | Ensemble Theatre Cincinnati | Melodic Connections | Women Writing for (a) Change |
| | | Falcon Theatre | My Nose Turns Red | Wyoming Fine Arts Center |
| | | FC Cincinnati | National Underground Railroad Freedom Center | Young Professionals' Choral Collective |
| | | | Neusole Glassworks | |
| | | | Pyramid Hill Sculpture Park and Museum | |
| | | | Queen City Opera | |



A family at the dedication ceremony of the new Black Lives Matter street mural
Photo credit: Katie Robinson, Cincinnati Refined



Luminaria lit up arts venues for the #ArtsUnite Campaign kickoff event
Photo credit: Bergette Photography

2020

ArtsWave Leadership Donors

Visionaries \$25,000+

Anonymous (2)
Shannon and Lee Carter
Castellini Foundation
Crosset Family Fund †
Melvin and Chandra Gravely
The Healey Liddle Family
Foundation
Mr. Carl H. Lindner III
Mr. S. Craig Lindner
Mr. Jon R. Moeller and Ms. Lisa
Sauer
Rosenthal Family Foundation*
Thomas R. Schiff
Stern Family Charitable Fund †
Mr. and Mrs. Thomas L
Williams*
Alison and Jim Zimmerman*

Ovation Circle \$15,000 to \$24,999

Anonymous
Mr. and Mrs. Leigh R. Fox*
Susan Friedlander
Naomi Tucker Gerwin
Milly and Gary Huffman
David and Pamela Joyce
Mr. Anthony L. Mathis
Mrs. Eleanor D. Nelson
Julie and Steve Shifman
Thomas and Lorri Simpson

Innovators Circle \$10,000 to \$14,999

Cecile D. Allyn
Colleen and Dean Athans
Eileen and John Barrett
Missy and Kerry Byrne*
Bridgit Chayt
Susan and Burton Closson
Lisa and Richard Ernst
Jonathan and Kristine Garrett

Nancy and Tom Gilman †
Lauren Hannan Shafer
David and Karen Hoguet*
Whitney and Phillip Long*
Deborah P. and John M. Majoras
Larry and Jill McGruder
Ms. Debra S. Merchant
Mr. Shawn T. Newman
Oliver Family Foundation
Jeffrey and Terry Potts
Rosemary and Mark Schlachter †
Timothy & Sarah Spence
Sarah and Steiny Steinman
Peter and Sandy Stern †
Dudley S. Taff
Carol G. Talbot
David and Marsha Taylor
Daman and Barbara Turner
Laura and Tayfun Tuzun
Andre and Maureen Valentine
George H. and Kim M. Vincent
Randolph L. Wadsworth
Judy and Joe Williams
Mary and James Zimmerman

Chair's Circle \$5,000 to \$9,999

Anonymous (4)
Laura Blackorby
Rosemary and Frank
Bloom †
Rich and Lisa Boehne
Neil Bortz
Chris and Karen Bowman
Trish and Rick Bryan
Mr. and Mrs. Greg
Carmichael
Ray and Marylyn Clark
Sheila and Christopher
Cole
Mr. Brent Cooper

Bob and Jeanne
Coughlin †
Shellie Creson
Mr. and Mrs. William O.
DeWitt, Jr.
Philip and Julie Duncan
Mr. and Mrs. Peter J. Effler
Dr. and Mrs. Robert L.
Faul
Suzette and Michael
Fisher
Mrs. Phillip O. Geier
Mr. Kala Gibson
Tom and Jan Hardy
Steven G. Haussler †
Louise Head †
Mrs. Anne P. Heldman

Kim and Gary Heiman
Family Foundation
Michelle and Don
Hershey
Lori and Rolf Hetico
Ms. Katy Hollister and Dr.
Brad Miller
Richard Holmes
Mr. and Mrs. Terence L.
Horan
Roger and Joyce Howe
Todd and Lea Immell
Ms. Heidi B. Jark and Mr.
Steven T. Kenat
Mr. Andrew R. Kaiser
Jamie Landheer

Beth and Peter Levin
Chris Lorence
Phil and Suzanne McHugh
Mrs. Valerie L. Newell
Roger and Barb Newport
Bill and Karen Neyer
Jack and Marilyn Osborn †
Mrs. Jacqueline G. Parker
John and Francie Pepper †
Joe and Susan Pichler †
Dr. Clifford Pleatman*
Wym and Jan Portman
Marly and Nick Ragland
Martin and Maribeth Rahe
Ellen Rieveschl

Marvin Rosenberg and
The EZR Spirit of Giving
Moe and Jack Rouse
Digi and Mike Schueler
Michael N. Schuster
Larry and Rhonda
Sheakley, Sheakley
Family Charitable
Fund
Jim and Mary Carol
Sowar
Mr. and Mrs. Vinnie
Spence
Mary Stagaman and Ron
Kull
Tom and Dee Stegman

continued on next page

Leadership Donors, Continued

The Rick & Corky Steiner Family Foundation
Jack and Joyce Steinman
Jim and Kathleen Stengel
Ms. Cenona A. Taveras and Dr. Eric Beatty
Anne Drackett Thomas
Margaret and Albert Vontz III †
Mr. Michael Vuotto
Mr. Dennis W. Watson
George and Kathy Wilkinson
Stanford and Kristi Williams
Sallie and Brennen Willingham
Mr. Joseph J. Willke and Dr. Megan G. Murray
Ms. Susan B. Zaunbrecher

Directors' Circle \$2,500 to \$4,999

Anonymous (14)
 William and Eve Appleton
 Dr. Kelyn A. Arora
 Gerard and Susan Bailley
 Jennifer Baker
 Joe and Trish Baker
 Amy Barhorst
 Ron Bates and Randy Lasley
 Ms. Pamela A. Battle
 William and Doreen Beckham
 Ronald and Jenifer Beerman
 Lois G. Benjamin
 Pamela and Jeffrey Bernstein
 Teresa Beschman
 Tracz & Tyonn Betts
 Mr. Steven Bishop
 Tom and Kali Boecher
 Glenn and Donna Boutillier
 Mrs. Sheri Boyle
 Mark & Robyn Brands
 Mr. and Mrs. Brian C. Brickner
 The Otto M. Budig Family Foundation
 Mr. John and Tiffany Bultema III
 Mr. Benjamin "Rocky" Byington
 Chris and Vivienne Carlson
 Scott and Wendy Carpenter
 Martha and Kevin Carroll
 Ms. Melanie M. Chavez
 Ms. Kim Chiodi

Mrs. Megan Colvin
 Mr. and Mrs. Michael A. Coombe
 Ms. Karen L. Crone
 Lisa Crosby
 John L. Crow and Heather Schmidt
 Mr. Angelo de Jesus
 Bruno De Weer
 Ms. Kimberly Doebereiner
 Ms. Kelley Downing
 Mr. Don Doyle, Jr.
 Clever Crazes for Kids, Dianne Dunkelman
 Dr. Lisa Dunlap
 Martine Dunn
 Anne Eberhart
 Mr. Brian A. Eichhold
 George and Jeane Elliott
 Mr. and Mrs. David W. Ellis III †
 Tim and Sheila Elsbrock
 Dave & Julie Eshman
 Susan B. Esler and Steve Skibo
 Richard and Carol Fencil
 Tom and Debbie Finn
 Mr. and Mrs. Stephen J. Fish
 Mr. and Mrs. Tadd A. Fowler
 Toriano and Maya Franklin
 Theresa Froehlich
 Kay Geiger
 Donald L. Gilbert MD and Deborah Gilbert PhD
 David M. Giles and Ellen M. Katz
 John B. Goering
 Diana and Robert Goetz
 Carrie and Ken Goldhoff and family
 Dr. and Mrs. James M. Greenberg
 Mrs. Linda Greenberg †
 Richard and Rosemary Greiwe
 Jerry Kathman and Liz Kathman Grubow
 Laura Guggenheim
 Ms. Kristal E. Hambrick
 Delores Hargrove-Young
 Ms. Kimberly Harris
 Debra Hartsell and Michael James
 Ms. Patricia Hartsfield-Davis
 Dr. Erik Hasenoehrl
 Teri and Mike Haught
 John and Carrie Hayden

Mr. and Mrs. James P. Henning
 Barbara and Guy M. Hild
 Mr. Richard Hill and Ms. Maria Gomez
 Jeff and Erika Hinebaugh
 Mr. and Mrs. Joseph W. Hirschhorn †
 Anu Gurung & Ben Hoffman
 Mr. and Mrs. Richard P. Homan
 Dave and Debbie Horn
 Christopher and Jennifer Houser
 Mike and Amy Hoyle
 Marianne and Don James
 Ms. Denise M. Jeavons
 James and Susan Joa
 Ms. Vesta Johns
 Jocelyn Jones
 Helen and Darius Kemp
 Mike and Michelle Kennedy
 Marcene C. Kinney
 Alecia and Michael Kintner
 David Kirk
 Tom and Sue Kirkpatrick
 Katie and Cameron Kitchin
 Mr. and Mrs. Palk Laffoon IV
 Louis Langrée
 Steve Leeper and Rae Vuic
 Janice Liebenberg and Andy Holzhauser
 Elizabeth Lilly †
 Bryn and Joshua Lorentz
 Ms. Cynthia A. Lyons
 Dennis and Teresa Lyons
 Mr. Douglas F. Lyons
 Carmie Maloney
 Suzanne Maratta
 Mr. Chad C. Martin
 Demetrice McClurkin
 Mr. and Mrs. Michael S. McGraw
 Kathryn and Rodney McMullen
 Ms. Susan McPartlin
 Mary Ann Meanwell
 Angela Meehan
 David and Michelle Meyer
 Mike and Ann Michael
 Randy and Krista Monnin
 Mr. Samuel Moore Jr.
 Carrie Marie Mount

Mrs. Shannon Mullen
 Ms. Brooke Mullett
 Kevin and Laure Murray
 Jonathan and Jennifer Niemeyer
 Ernest Nordquist
 Michael & Michele O'Rourke
 Elizabeth and Walter Osborne
 Ken Oswald and Mary Beth Martin
 Eric and Diana Paternoster
 Lauren and Justin Peter
 Mr. Daniel Pfahl
 Philip Wickler and Michele Pfeiffer
 Robert A. Pitcairn, Jr.
 Darwin Popenoe
 Dan and Julia Poston
 David and Jenny Powell
 Jonathan Powell
 Jason and Emily Praeter
 Mr. and Mrs. R. Michael Prescott
 Mrs. Elizabeth M. Radke
 Ms. Audra Rance
 Jackie Reau, Game Day Communications
 Vicky and Rick Reynolds
 Mr. J. Scott Robertson
 RUGiving2
 Ms. Jean Lydon-Rodgers
 Tonya Ross
 Cathie and Rick Rothfuss
 Karl and Robin Rothfuss
 Ms. Laura Ryan
 Ann and Harry Santen †
 Ms. Martha Cutright Sarra
 Mr. Carl Satterwhite
 Jerry W. and Ann G. Schoen
 Ms. Pamela J. Schofield
 Greg and Debbie Schroeck
 Ms. Katie Schwarber
 Robin Seaborough
 Mark and Jane Serianne
 Bob and Kirsten Shaffer
 Christopher and Laura Shroat
 Jerry and Betsy Shroat
 Sheilakai Simmons
 Jennifer Simpson
 Mr. Robert J. Siverd
 Mr. Michael Slattery
 Mr. and Mrs. Richard D. Reis
 Benjamin Spiegel

Dr. Shawn Standridge
 Kevin Stanford
 Ms. Elizabeth Stautberg
 Katherine and Tim Stautberg †
 Mr. Joseph Stegbauer
 Tim and Christine Steigerwald
 Richard Stein
 Elizabeth A. Stone †
 Mr. and Mrs. Richard Stradling, Jr.
 George Stricker Jr.
 Steve and Ellen Suetholz
 Tim and Teresa Tanner
 Deana Taylor
 Ellen and Ray van der Horst
 Sander Vinks and Yvonne van Eijden
 Mr. and Mrs. J. Philip Vollmer
 Warren and Pam Weber
 Mr. Gerald Weigle, Jr.
 Mr. and Mrs. Irwin Weinberg †
 Karen and Marc Weinberg
 Ms. Jane Welling
 Barbara Weyand
 Mr. and Mrs. Gregory M. Wheeler
 Ms. Chiquita V. White
 Mr. Brian R. Wildman
 Mr. and Mrs. Christopher Wilson
 William L. Montague and Kelly L. Wittich †
 Lisa and Adam Wolter
 Mr. and Mrs. Gordon C. Wright
 Mr. Shane M. Wright

Leadership Circle \$1,500 to \$2,499

Anonymous (27)
 Alan Abes
 Sarah Absher
 Daniel Abt
 Mr. and Mrs. Richard N. Adams
 Cincinnati Etiquette & Leadership Institute, LLC - Tiffany Adams, Founder
 Scenario Adebesein
 Victor Aguilar Moses
 Mr. Daniel Albrecht and Mr. Neal Brower
 Helena Alsbury
 Diane L. Altmix
 Mrs. Wilma Anthony



The Hook & Hastings Bourbon, developed by Brain Brew Custom Whiskey
Photo credit: Bergette Photography



The new Art Climb at the Cincinnati Art Museum
Photo credit: Phil Armstrong, Cincinnati Refined

Marjorie Applegate
Mr. Steve Arnold
Sergio Arreola
Mr. Derek Asher
Dr. Diane S. Babcock
Kathleen Baier
Stephen and Janiene Baker
Lynn Baldwin
Ms. Quiana Barbee
Karen S. Barfield
Denise Barrows
William and Mary Baskett
Ms. Deanna F. Bass
Flavia M. C. Bastos, Ph.D.
Beverly Ann Bates
Mary Batt
Ms. Alyssa Baute
Andrew Beach
Thomas Bechard
Mr. Donald Beck and Dr. Lawrence Eynon
Mrs. Cindi Bedinghaus
Patty and Jim Beggs
Ms. Andrea Behanan
Mr. and Mrs. Christopher J. Bell
Mr. and Mrs. Louis and Judy Belli
John Berninger
Mr. and Mrs. Robert T. Betz
Maureen A. Bickley
David and Elaine Billmire
James Black
Randal and Peter Bloch
Roslyn Bolden
Ms. Catherine Botos
Ms. Roberta A. Boyd
Jody and Debbie Brant
J. David Brittingham
Nina and Frederick Britton
Mrs. Khloe Broelmann
Bruce and Nancy E. Brown
Emily Brown
Kelly and Timothy Brown

Stacey Browning
Mike and Mary Bruggeman
Eileen and Karl Brumbach
Laura and Paul Brunner
Jacklyn Bryson
Ms. Linda Brzuchalski
Mrs. Eileen M. Budo
Angie and Bob Buechner
David Bulman
Jennifer Burgas
Mr. James E. Burke
Lori Burkhardt
Mrs. LaCrea Burns
Mr. and Ms. Garrett and Laura Burns
Mr. William Bussa
Dr. Veronica Busso
Michael Butera
Mr. Philip C. Byrde
Mr. Anthony Candy
Gerald Cantey
Mr. Patrick Cappel
Jennifer Carlton
Karen L. Carnahan
Dr. and Mrs. Thomas A. Carothers
Jeff Carter
Caslavka Family
Tessa Castner
Karen Chamberlain
Carri Chandler
Duane Charbonneau
Mr. Ashish Chatterjee
Ms. Holly L. Cheers
Mr. and Mrs. Paul W. Chellgren
Ronald Christian
Missy Ciricillo
Mrs. Natalie Collier
Eric and Jane Combs
Mr. and Mrs. Gerald Coogan
Julie Coogan
David W. Cook
Mr. Rocky Coppola
Hideo and Sherri Core

John Cothran
James Cowan
Vittorio Cretella
Michael Dailey
Jennifer and Vito Damiano
Jennifer Davis
Thomas Dean
Kathy DeBrosse
Ms. Kristine Decker
Tom Degaetano
Dr. Rose Marie Deibel
David Deitsch
Linda Dennis
Nicholas Denton
Mr. Dennis W. Dern
Mr. and Mrs. Sean X. Deschene
Mike and Cathy DeWeirdt
Mr. and Mrs. Andrew and Amy DeWitt
Dr. Thomas G. Dewitt
Ms. Jill Dickert
Bill Diehl
Mr. and Mrs. Ronald J. Dolan
Kevin and Sally Donovan
Martha and Stuart Dornette
Dan Downing
Thad Driscoll
Mr. Eric Ducharme
Joshua T. Duckworth
Mrs. Michelle Duever
Mr. Albert Early
Mr. and Mrs. Steven and J'Nelle Easley
Mr. and Mrs. David Eberhart
Robert and Rachel Eckman
Paul and Molly Edmondson
Christian Eihausen and Claudia Menges-Eihausen
Mr. and Mrs. Robert Elberfeld
Janell Ellis

Mr. Christopher C. Elma
Jean M. Elwing, MD
Ms. Revae Embs
Dr. Teresa F. Ernst
Tony and Sharon Esposito
Ms. Kathryn Evans
Robert C. Faelten
Mark J. and Melissa Fahner
Mr. Dan Fales
Ms. Lisa Fangman
Katrina Franklin Farmer
Carrie Farmer-Rasmussen
Dr. and Mrs. Michael K. Farrell
Ms. Mary Lynn Ferguson-McHugh
Tiffany Michelle Findlay
Mary Liz and Tom Finn
Anne and Matthew R Fischer
Matthew Fitzpatrick
Jason and Shellie Foley
Mr. David Francis
Jenny Franta
Damon and Karyn Frost
Robert Ganz
Jane Garvey and John Lanier
Louisa and Gregory Gehring
Ms. Jodi Geiser
Laura Geisler
Lu and Thom Gerdes
Mr. Charles H. Gerhardt
Michelle Gibbs
Rachel Gick
Michelle and Joseph Gillis
Mrs. Elizabeth D. Goldsmith
Ms. Arlene Golembiewski
Ms. Jeanne Gollither
Eryvett Gonzalez
Mr. Clifford Goosmann and Ms. Andrea Wilson
Madeleine Gordon (Mady)

Mr. Bill Goslee
Mary Grabowski
Ms. Julie Grady-Heard
Richard M. and Colleen A. Grant
Regina Gray
Nancy and Trey Grayson
Paul Griscom
Elizabeth Lovett Grover †
Gary and Dina Gruber
Janice Gruner
Mr. Billy Guthrie
Mr. and Mrs. Louis Gutfman
Chris and Angela Habel
Ms. Lia Hager
JoAnn and Gary Hagopian
Mrs. Kathy A. Haines
Mrs. Kimberly Halbauer
Michelle Hall
Nicole Hall
Mr. and Mrs. Frank Hanson
Linda Harlow
Guy Harmon
Mr. Joseph Harper
Mrs. Laura Hartman
Jill Hartmann
Barbara Hauser
Vista Foundation
Mr. and Mrs. Robert R. Heidenreich
Mr. and Mrs. Fred Heldman †
Ms. Cynthia E Henderson
Alan and Jo Henning
Mr. Martin Hettich and Ms. Nina Urban-Hettich
Mr. Michael Christopher Hetzel
Mr. Joseph D. Heyd
Tillie Hidalgo Lima
Vada Hill
Mr. Michael A. Hirschfeld
Mary Hodge
Teresa Hoelle and Scott Provancher

Leadership Donors, Continued

Mr. John Hoeting
 Mrs. Florette B. Hoffheimer
 David Holcombe
 Michelle Hopkins
 Holly Horlander
 Mrs. Paula Hornbaker
 Marjorie Hull
 Laura L Humphrey
 Bradley Hunkler
 Alissa Huschart
 Dr. John Hutton
 Gregory T. Hyland II and Andrew Steinbrecher
 Doug Ignatius and Bruce Preston
 Maite Iraolagoitia
 Mr. and Mrs. Kevin E. Irwin
 Danielle Ivory
 Jason Jackman
 Charles and Eve Jackson
 Ms. Doris S. Jackson
 Kara Jackson
 Nalini Jagannath
 Mr. Matthew Jauchius
 Ms. Vinitaa Jayson
 Rev. Susan Jelinek
 Ms. Margaret Johnson
 Michelle Johnson
 Mr. Paul Johnson
 Mr. Timothy Johnson
 Dr. and Mrs. Richard Jolson
 Mr. Clayton Jones
 Damon Jones
 Mr. Titus A. Jones
 Ms. Krista Jones-Gehring
 Ms. Della R. Jordan
 Sherrie Jordan
 Cheryl Jorgenson
 Jay and Shirley Joyce
 Brian Judkins

Elizabeth Jukic
 Adam and Chris Kahn
 Brian and Alisha Kalb
 Tim Cagle and Rick Kammerer
 Mr. Joel Kashuba
 Ms. Athena Kaviris
 Patti and Tom Keckeis †
 John and Debra Kellington
 Kate and Michael Kennedy
 Angela Noelle Kenney
 Caroline Key
 Amit and Sabina Khemchandani
 Brian and Jackie Kirkpatrick
 Kris Kleehamer
 Ms. Claudia S. Kohlman
 Mr. Mark L. Koors
 Daniel Koppenhafer
 Mrs. Rebecca Kosina
 Kush Kotecha
 Mr. and Mrs. William S. Krausen
 Karl Kreunen
 Mr. Dean Kuroff
 Jessica Laine
 Linda Lake
 Peter Landgren and Judith Schonbach
 Dorothea Langsam
 Roger Lanham
 Ms. Nanci Lanni
 Jennifer Larkins
 Mr. Jeffrey Lathan
 Mrs. Emily Lathrop
 Kei and Shannon Lawson
 Mary Mc and Kevin Lawson
 Jason and Brandi Lenihan
 Tom & Diane Leugers

Andi Levenson Young
 Debbie Lewinski
 Carrie Lichter
 Mr. Osborne Liggins
 Mr. Harry Lind
 William Lindsey
 Jenifer and David Linnenberg
 Dr. Kevin Liu
 Lisa Loiselle
 Greg Long
 Mrs. Elia Lopez
 Bill and Diana Lower
 Jennifer Lowery
 Michael Lucia
 Dr. John A. MacLeod
 John Maddrill
 Trina Madry
 Jodi Maieron
 Anne Maness
 Emily Manning
 Thomas D. Mantei and Anne Chasser
 Sherie Marek
 Susan Marmo
 Mr. Jonathan Martin
 Mr. & Mrs. Paul Martini
 Ms. Ana Elena Marziano
 Maria Mason
 Ms. Lisa M. Mather
 Beena Mathew
 Evan Mathis
 David W. Mauldin
 Mr. Patrick McCall
 Michael McCarren
 Michael and Megan McCuen
 Robert McDonald
 Tim and Trish McDonald
 Candace McGraw
 Mark E. McKillip
 Marybeth McManus

Shelly McNamara
 Adam and Katie McNeely
 Mr. and Mrs. John McShane
 Mr. and Mrs. Charles E. Mead, Jr.
 Mr. and Mrs. Jeffrey Meek
 Ms. Susan M. Meeks
 Mr. Donald Mendelsohn †
 Isabel Mendez and Georg Schlangen
 Mr. John Merchant
 Ms. Kathryn E. Merchant
 Jill P. Meyer and Awadagin Pratt
 Mrs. Maureen Montgomery
 Mr. Paul Moore
 Mr. Terence Moore
 Elizabeth Moreno
 Victoria Morgan
 Lauren Morgenstein
 Gwen Morris
 Ms. Nerissa Morris
 Dr. Joel Mortensen
 Mrs. Janet Moulton
 Paul and Terri Muething
 Dr. Stephen Muething
 Mr. Martin Muff
 Anne E. Mulder and Rebecca M. Gibbs
 Joe Muraca
 Sandra Murawski
 Mrs. Anne Murphy
 Mr. Ryan Murphy
 Michael Napier
 Ms. Katherine Nappi
 Rajinder Narang
 Kathy Nardiello
 Mr. Thomas M. Nash
 Christina and Pete Neises
 Bryan Nelson
 Ms. Naomi Nelson
 Mr. Thomas Neltner
 De Asa Nichols
 Mr. and Mrs. Suresh Nirody
 Pedro Noriega
 Molly North
 Tracey Nowlin
 Mr. Richard Oberschmidt and Mrs. Diana Oberschmidt

Lanell Ohlinger
 Elizabeth and Stefan Olson
 Ms. Lorin Olson
 Mrs. Emily Overton
 Dr. Maria Palmieri
 Tyler Parson
 Tom and Marian Partridge
 Doris Paul
 Ellie and Dick Paulsen
 Emily Seitz Pawlak
 Mrs. Cassandra Pearson
 Mrs. Alice Perlman
 Audrey Pettengill
 Liane and Dave Phillips
 Jennifer Pinson
 Ms. J. Phenise Poole
 Terrence Porter
 Ms. Maryann Powell
 Michael Powell
 Timothy Powell
 Ramya and Sundar Raman
 Mr. Barry Randman
 Amanda Rassi
 John and Kim Ravenhall
 Chad and Melissa Reardon
 Stacey Reheman
 Mr. Aaron Reiff
 Robert and Gretchen Reifsnyder
 Linda M Reiring
 Mrs. Patricia Reisz
 Jonathan Reynolds
 Martin and Fiona Riant †
 Patricia Pease Rice
 Dr. Jeanette Richards
 Marcus Richardson
 Linda A. Richey
 Al & Lesia Riddick
 Ms. Aliya Riddle
 J. Erin Riehle
 Mary Riffe
 Mr. Thomas Ritter
 Nancy Catherine Roberto
 Ms. Cynthia S. Robertson
 Blake Robison and Connan Morrissey
 Alexandra C. Rock
 Scott Rodrigue
 Jessica Rohrkemper
 Cheryl Rose and Jeff Chapman
 Scott Rose
 Richmond Rosen



Siri Imani of TRILIBE performs at the CSO Look Around, kicking off the Cincinnati Symphony Orchestra's 2020 season
 Photo credit: Kathy Lyons

Dr. Jan Rosenbaum Sass
 Jens Rosenkrantz Jr
 Mr. Nick G. Rosian
 Karen Upright Rouda
 Robert J. Rouse
 Andrea Ruiz Rabadan
 Joy Herald Rutan
 Susan Rutkowski
 Jack and Martine Ryan
 Ms. Leslie Ryan
 Marie Laure Salvado
 Bill and Lisa Sampson
 Gloria Samuel
 Kathy and Mario San Marco
 Mrs. Linda C Sandidge
 Ann Sandman
 Edward Sawicki
 Ms. Christine Schaub
 Kris L. Scheihing
 Charles Scheper
 Robert and Dawn Schiff
 Benjamin Schlagheck
 Roger J. and Glenda C. Schorr †
 Mr. Herb and Ms. Jenn Schul
 Dr. Ann E. Schulte
 Jack Schwartz
 Mr. Darius Scott
 Ms. Joanne Scott
 Ellen Tischler
 Mr. Thurmond Senter
 Ms. Maida Session

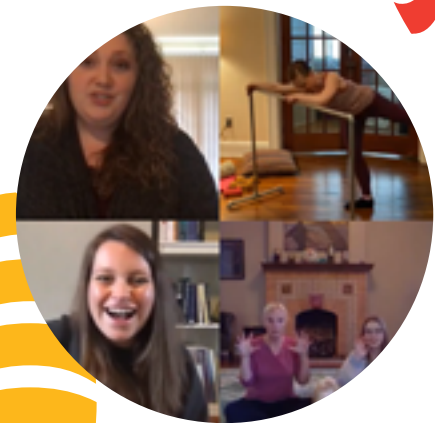
Ms. Julia L. Setser
 Megan Shaffer
 Matthew and Robin Sheakley
 Scott and Sharon Shepherd
 Mr. and Mrs. Brent and Valarie Sheppard
 Uday & Nandita Sheth
 Erik Sieve
 Liliana Silva
 Mr. Brant Simmons
 Irwin and Melinda Simon
 Matthew Simpson
 Murray Sinclair
 Kirti & Charu Singh
 Ms. Bethany R. Smith
 Jamie Smith
 Ms. Kate Smith
 Michael and Donnalyn Smith
 Ms. Stephanie Smith
 Sofie Snauwaert
 Troy Snider
 Kelly Soller
 Stephanie Spaccarelli
 Amy and Keith Spiller
 Doug Stang
 Leroy & Kandi Staples
 Terry Starcher
 J. Shane Starkey
 Shannon and Matt Stautberg
 Katharine Stechschulte

Dr. Paul Steele
 Paula Steiner
 Don and Kristin Stock
 Gloria Story
 Bernard Suer
 Brian & Lori Sullivan
 Mr. and Mrs. Kevin R. Sullivan
 Thanikachalam Sundarajan
 Tina Surface
 Ms. Robin Swartz
 Adam Symson
 Don and Linda Tecklenburg
 Jacqueline M. Terry
 Beverly Tharp
 Abbot and Josie Thayer
 Mr. Horace Thomas
 Ms. Pamela Thompson
 Ms. Kathleen Thornton and Dr. Robert Keith
 Jason J. Tonich
 Maria E. Troyano, Ph.D.
 Brianna Trucco
 Robert and Carol Turner
 Monica Turner
 Andrew Ulmer and Bobbie McTurner
 Ken and Liz Valentine
 Mrs. Kimberli Valentine
 Donald Van Fossen
 Kelly and Guy Vanasse
 James Vance

Jeremy and Louise Vaughan
 Mary Vigilante
 David Voelker
 Mr. and Mrs. Stephen G. Vollmer
 Daniel and Emily von Allmen
 Mrs. Mary Wagner
 Sonya Walton
 Buzz Ward
 Anne Warrington
 Chris and Hanna Watford
 Conni Weaver
 Pam Webb
 Carolyn and Bob Wehling
 Mary Lou Wells
 Gary and Diane West
 Rhea West
 Mr. and Dr. Scott Whalen
 Susan Whaley
 Peter Whipple
 Ms. Rhonda Whitaker Hurtt
 Dr. Deborah Whitis
 Mr. Ken Wigton
 Andrea Wilkerson
 David Willbrand
 Ms. Diana Willen
 Kevin Williams
 Gregg H. Wilson

Mr. and Mrs. Richard Wilson
 Mr. and Mrs. Jay and Jodi Woffington
 Nancy and David A. Wolf
 Ms. Christine Wolfzorn
 Mrs. Jordan Wood
 Ms. Rebecca S. Wood
 Mr. Scott Workman
 Dr. Nestor Worobetz
 Ms. Michelle A. Wright
 Adrienne Brooke Wyatt
 Mr. Jeffrey C. Yancey
 Deb Silverman & Chris Zehetmaier

* Includes gift to the Arts Vibrancy Recovery Fund
 † Through a fund at the Greater Cincinnati Foundation



Virtual arts offerings; clockwise from top left: Cincinnati Opera, Cincinnati Ballet, Linton Chamber Music and Melodic Connections

Visitors participate in ArtsWave's drawing contest at BLINK® 2019
 Photo credit: Bergette Photography

Members of the Women's Leadership Roundtable created paintings during the Arts Night Out at the Taft Museum of Art
Photo credit: AmyElisabeth Photography



Members of the Women's Leadership Roundtable at the Wine and Shakespeare event, hosted by Cincinnati Shakespeare Company
Photo credit: AmyElisabeth Photography

arts wave Women's Leadership Roundtable

ArtsWave Women's Leadership Roundtable brings together women who support and value the impact, reach and quality of the arts in our region to inspire and be inspired. Members support ArtsWave at the leadership level.

2020 Women's Leadership Roundtable Members

Anonymous (7)
Sarah Absher
Cincinnati Etiquette & Leadership Institute, LLC - Tiffany Adams, Founder*
Scenario Adebessin
Helena Alsbury
Diane L. Altmix
Mrs. Wilma Anthony
Dr. Diane S. Babcock
Kathleen Baier
Susan Bailley
Jennifer Baker
Lynn Baldwin
Ms. Quiana Barbee
Karen S. Barfield
Amy Barhorst
Deanna Bass
Flavia M. C. Bastos, Ph.D.
Beverly Ann Bates
Ms. Pamela A. Battle
Ms. Alyssa Baute*
Cindi Bedinghaus
Patricia K. Beggs
Ms. Andrea Behanan
Lois G. Benjamin
Pam Bernstein
Teresa Beschman
Tracz Betts
Carol Beyersdorfer
Maureen Bickley
Laura Blackorby
Kali Hacias Boecher
Roslyn Bolden
Ms. Catherine Botos
Mrs. Sheri Boyle
Robyn Brands
Debbie Brant

Nina Britton
Khloe Broelmann
Emily Brown
Stacey Browning
Ms. Eileen Brumbach
Laura Brunner
Trish Bryan
Jacklyn Bryson
Ms. Linda Brzuchalski
Eileen M. Budo
Jennifer Burgas
Lori Burkhardt
Mrs. LaCrea Burns
Ms. Laura Burns*
Dr. Veronica Busso
Martha Carroll
Shannon Carter
Karen Chamberlain
Anne Chasser
Ms. Melanie M. Chavez
Bridgit Chayt
Ms. Holly L. Cheers
Kim Chiodi
Missy Ciricillo
Keris Clark
Mrs. Natalie Collier*
Megan Colvin
Shellie Creson
Lisa Crosby
Jennifer Damiano*
Kathy DeBrosse
Kristine Decker
Rose Marie Deibel
Linda Dennis
Ms. Jill Dickert*
Kimberly Doebereiner
Kelley Downing
Mrs. Michelle Duever

Dianne Dunkelman
Dr. Lisa Dunlap
Mrs. J'Nelle Easley
Anne Eberhart
Mrs. Michelle Eggers
Julie Elberfeld
Janell Ellis
Jean M. Elwing, MD
Ms. Revae Embs
Lisa Catron Ernst
Teresa F. Ernst
Susan B. Esler
Ms. Kathryn Evans
Ms. Lisa Fangman
Tiffany Michelle Findlay
Kathy Fish
Maya Quinea Franklin
Jenny Franta
Sue Friedlander
Kristine Garrett
Jane Garvey
Sudie Geier
Kay Geiger
Jodi Geiser
Laura Geisler
Naomi Tucker Gerwin
Michelle Gibbs
Rachel Gick
Michelle Gillis
Ms. Arlene Golembiewski
Jeanne Gollither
Ms. Maria Gomez
Eryvett Gonzalez
Madeleine Gordon (Mady)
Colleen A. Grant
Chandra Gravely
Nancy Grayson

Linda Greenberg
Liz Kathman Grubow
Laura Guggenheim
Anu Gurung
Ms. Lia Hager
JoAnn Hagopian
Kathy A. Haines
Kimberly Halbauer
Michelle Hall
Sarah Hall
Michele Halpin
Kristal Hambrick
Lauren Hannan Shafer
Amy Hanson
Delores Hargrove-Young
Linda Harlow
Ms. Kimberly Harris
Laura Hartman
Jill Hartmann
Debra Hartsell
Patricia Hartsfield-Davis
Teri Haught
Barbara Hauser
Melanie Healey
Mrs. Anne P. Heldman
Ms. Cynthia E Henderson
Michelle Hershey
Tillie Hidalgo Lima
Mary Hodge
Teresa Hoelle
Katy Hollister
Michelle Hopkins
Marjorie Hull
Laura L. Humphrey
Alissa Huschart
Maite Iraolagoitia
Danielle Ivory
Nalini Jagannath

Marianne James
Heidi B. Jark
Denise Jeavons
Susan L. Joa
Margie Johnson
Michelle Johnson
Jocelyn Jones
Ms. Della R. Jordan
Sherie Jordan
Elizabeth Jukic
Chris Kahn
Alisha Kalb
Anneke Kaminski
Ellen M. Katz
Ms. Athena Kaviris
Helen Kemp*
Kate Kennedy
Angela Noelle Kenney
Caroline Key
Sabina Khemchandani
Marcene C. Kinney
Alecia Kintner
Jackie Kirkpatrick
Ms. Claudia S. Kohlman
Mrs. Rebecca Kosina
Jessica Laine*
Jamie Landheer
Dorothea Langsam
Ms. Nanci Lanni
Jennifer Larkins
Mrs. Emily Lathrop
Kei Lawson
Mary Mc Lawson
Andi Levenson Young
Debbie Lewinski
Carrie Lichter
Janice Liebenberg
Cynthia Lyons

Women's Leadership Roundtable Members, Continued

Jodi Maieron
Deborah P. Majoras
Carmie Maloney
Anne Maness
Emily Manning
Suzanne Maratta
Susan Marmo
Maria Mason
Beena Mathew
Evan Mathis
Candace McGraw
Jill McGruder
Marybeth McManus
Shelly McNamara
Katie McNeely
Susan McPartlin
Mary Ann Meanwell
Angela Meehan
Susan M. Meeks
Isabel Mendez
Kathryn E. Merchant
Jill P. Meyer
Krista Marantos Monnin
Mrs. Maureen
Montgomery
Elizabeth Moreno
Victoria Morgan
Gwen Morris
Ms. Nerissa Morris
Mrs. Janet Moulton
Carrie Marie Mount
Anne E. Mulder and
Rebecca M. Gibbs
Ms. Brooke Mullett
Sandra Murawski
Mrs. Anne Murphy
Ms. Katherine Nappi
Rajjinder Narang
Kathy Nardiello
Christina Neises
Naomi R. Nelson
Valerie L. Newell
De Asa Nichols
Molly North

Lanell Ohlinger
Elizabeth Olson
Ms. Lorin Olson
Elizabeth Osborne
Debbie Ostendorf
Mrs. Emily Overton
Dr. Maria Palmieri
Mrs. Jacqueline G.
Parker
Doris Paul
Emily Seitz Pawlak
Mrs. Cassandra Pearson
Francie Pepper
Audrey Pettengill
Jennifer Pinson
Ms. J. Phenise Poole
Julia Poston
Jenny Powell*
Ms. Maryann Powell
Emily Praeter
Elizabeth Radke
Marty Ragland
Maribeth S. Rahe
Ms. Audra Rance
Amanda Rassi
Kim Ravenhall
Jackie Reau
Stacey Reheman
Linda M Reiring
Mrs. Patricia Reisz
Patricia Pease Rice
Jeanette Richards
Linda Richey
Ms. Aliya Riddle
Erin Riehle
Ellen Rieveschl
Mary Riffe
Nancy Roberto
Cynthia S. Robertson
Alexandra C. Rock
Ms. Jean Lydon-Rodgers
Jessica Rohrkemper
Cheryl Rose

Dr. Jan Rosenbaum Sass
Tonya Ross
Karen Upright Rouda
Andrea Ruiz Rabadan
Joy Herald Rutan
Susan Rutkowski
Martine Ryan
Marie Laure Salvado*
Lisa Sampson*
Gloria Samuel
Mrs. Linda C Sandidge
Ann Sandman
Ann Santen
Martha Cutright Sarra*
Lisa Sauer*
Ms. Christine Schaub
Kris L. Scheihing
Rosemary Schlachter*
Heather Schmidt
Ann G. Schoen
Diji Schueler
Dr. Ann E. Schulte
Ms. Katie Schwarber
Ms. Joanne Scott*
Robin Seaborough
Ms. Maida Session
Barbara Sfera
Robin S. Sheakley
Valarie L. Sheppard
Nandita Sheth
Julie Shifman*
Liliana Silva
Deborah Silverman
Jennifer Simpson
Lori Simpson
Ms. Bethany R. Smith
Ms. Kate Smith
Ms. Stephanie Smith
Sofie Snauwaert
Kelly Soller*
Stephanie Spaccarelli
Pamela Reis
Holly Spence

Amy Spiller
Mary Stagaman
Kandi Staples
Terry Starcher
Elizabeth Stautberg
Katharine Stechschulte
Christine Steigerwald
Paula Steiner
Melissa Stevens
Tina Surface
Robin Swartz
Carol G. Talbot
Teresa Tanner
Carolyn Tastad
Cenona A. Taveras
Deana Taylor
Jacqueline M. Terry
Ms. Pamela Thompson
Ms. Kathleen Thornton
Laura Tomlin
Maria E. Troyano, Ph.D.
Brianna Trucco
Barbara A. Turner
Monica Turner
Mrs. Kimberli Valentine
Ellen van der Horst
Kelly Vanasse
Louise Vaughan
Mary Vigilante
Mrs. Mary Wagner
Conni Weaver
Pam Webb
Pamela Weber
Jane Welling
Rhea West
Barbara Weyand
Ms. Rhonda Whitaker
Hurtt
Chiquita V. White
Dr. Deborah Whitis
Kathy Wilkinson
Diana J. Willen
Kristi Clement Williams

Sallie Willingham
Kelly L. Wittich*
Jodi Woffington*
Christine Wolfzorn
Lisa Wolter
Mrs. Jordan Wood
Rebecca S. Wood
Ms. Michelle A. Wright
Adrienne Brooke Wyatt
Susan Zaunbrecher

* Denotes Steering
Committee Member



Women's Leadership Roundtable members at the Wine and Shakespeare event at Cincinnati Shakespeare Company
Photo credit: Amy Elisabeth Photography

2020

ArtsWave Pride Ambassadors



ArtsWave Pride Ambassadors make an additional gift to help fund a grants pool that supports LGBTQIA programming.

Anonymous
Tim Cagle and Rick Kammerer
Jon Calderas
Ford T. Clark*
Jennifer and Vito Damiano*
Steven L. Franks*
Beth Freemal and Kenneth Moore
L. Timothy Giglio
Michelle Hall*

Doug Ignatius and Bruce Preston*
Ms. Susan M. Ingmire
Kathy Nardiello*
Josh Neumeyer
Kara Sanders and Heather Young*
Jay Shatz
John Webb

* Denotes Steering Committee Member



"Rainbow Bridge" by Josh Zubkoff and Srikanth Guittikonda on The Banks at BLINK® 2019
Photo credit: Bergette Photography



Virtual panel discussion at "Lifting Every Voice: Singing Proudly for Equality," an event sponsored by ArtsWave Pride and PNC, featuring Cincinnati Men's Chorus and MUSE, Cincinnati's Women's Choir



Kala Gibson of Fifth Third Bank and the CAALA Steering Committee speaks at the 2020 Campaign kickoff
Photo credit: AmyElisabeth Photography



The dedication of "Black Excellence in Zone 15," a new mural in Lincoln Heights
Photo credit: Colleen Houston



Circle of African American Leaders for the Arts



Dayton Contemporary Dance Company's "Retro/ACTIVE" performance
Photo credit: Steven Easley

The Circle of African American Leaders for the Arts brings together men and women in our community who believe that the power of the arts is bridging cultural divides. Members support ArtsWave at the leadership level.

2020

Circle of African American Leaders for the Arts

Anonymous (2)
Scenario Adebisin
Mrs. Wilma Anthony
Sergio Arreola
Ms. Quiana Barbee
Beverly Ann Bates
Ms. Pamela A. Battle
William Beckham
Ms. Andrea Behanan
Tracz & Tysonn Betts
Roslyn Bolden
Ms. Catherine Botos
Mrs. LaCrea Burns*
Gerald Cantey
Keris Clark
Mrs. Natalie Collier
Hideo and Sherri Core
James Cowan
Lisa Crosby
Kristine Decker
Martine Dunn
Mr. and Mrs. Steven and J'Nelle Easley
Katrina Farmer
Jason and Shellie Foley
Toriano and Maya Franklin
Damon Frost
Mr. Kala Gibson*
Ms. Julie Grady-Heard
Melvin and Chandra Gravelly*
Regina Gray
Delores Hargrove-Young*
Ms. Kimberly Harris

Vada Hill
Mary Hodge
Teresa Hoelle and Scott Provancher
Michelle Hopkins*
Danielle Ivory
Ms. Doris S. Jackson
Kara Jackson
Damon Jones
Ms. Jocelyn Jones
Ms. Della R. Jordan
Ms. Athena Kaviris
Helen and Darius Kemp
Angela Noelle Kenney
David and Guinette Kirk
Mr. Jeffrey Lathan
Kei and Shannon Lawson
Janice Liebenberg
Mr. Osborne Liggins
Dr. Kevin Liu
Trina Madry
Mr. Anthony L. Mathis
Evan Mathis
Demetrice McClurkin
Mr. John Merchant
Jill P. Meyer and Awadagin Pratt
Dr. Monica Johnson Mitchell*
Mr. Samuel Moore Jr.*
Mr. Terence Moore
Ms. Nerissa Morris
Bryan Nelson
Mr. Shawn T. Newman

De Asa Nichols
Pedro Noriega
Tracey Nowlin
Mrs. Jacqueline G. Parker
Mrs. Cassandra Pearson
Ms. J. Phenise Poole
Terrence Porter
Mr. and Mrs. Marc S. Pritchard
Ms. Audra Rance
Dr. Jeanette Richards
Marcus Richardson
Lesia Riddick
Miss Aliya Riddle
RUGiving2
Gloria Samuel
Linda Sandidge
Mr. Carl Satterwhite
Mr. Darius Scott
Robin Seaborough
Ms. Maida Session
Sheilakai Simmons
Thomas Simpson
Mr. Dwight T. Smith
Ms. Stephanie Smith
Albert and Liza Smitherman
Mr. and Mrs. Vinnie Spence
Mary Stagaman

Leroy & Kandi Staples
Ms. Cenona A. Taveras and Dr. Eric Beatty*
Deana Taylor*
Barbara A. Turner
Monica Turner
Mrs. Kimberli Valentine
Sonya Walton
Rhea West
Chiquita V. White
Andrea Wilkerson
Mr. and Mrs. Stanford T. Williams, Jr.
Ms. Michelle A. Wright
Adrienne Brooke Wyatt

* Denotes Steering Committee Member



The audience at Dayton Contemporary Dance Company's "Retro/ACTIVE," the inaugural concert of the Flow performance series
Photo credit: Stephen Easley



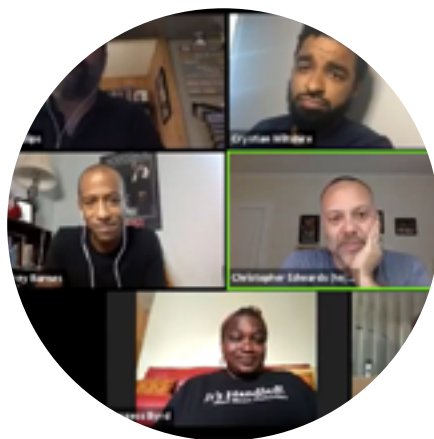


"Shadow Exposed," an installation by Judy K. Suh and Visual Feeder at BLINK® 2019
Photo credit: Bergette Photography

The ArtsWave YP lounge at Empower's office space during BLINK® 2019

arts wave

Young Professional Leaders



Cincinnati Shakespeare Company hosts a virtual happy hour event

Young Professional Leaders are dedicated to cultivating awareness of, encouraging engagement in and promoting philanthropy for ArtsWave with the next generation of community leaders. Membership is open to Young Professionals who contribute \$500 or more to the ArtsWave Community Campaign.

2020 Young Professional Leaders

Anonymous (9)
Sarah Absher
Daniel Abt
Miss Chelsey Alexander
Jacqueline Allshouse-Hutchens
Helena Alsbury
Zach Alter
William Andes
Mr. Derek Asher
Jocelyn Banks
John Barnes
Katricee Barrett
Kimberly Barrett
Mr. Tyler Barto
Ms. Alyssa Baute
Freddy Percy Bharucha
Maureen A. Bickley
Ms. Catherine Botos
Norman Bouwie
Emily Brown
Ms. Linda Brzuchalski
Jennifer Burgas

Mr. and Ms. Garrett and Laura Burns
Jeremy Campbell
Keith Carlson
Caitlin Case
David Boyles & David Castillo
Tessa Castner*
Mandar Chati
Joshua Chowdhury
Lyhan Christopfel
Ford T. Clark
Melissa Cloud
Kristopher Cole
Mrs. Megan Colvin
Tony Coors
Meghan and Nic Covey
Bobbi Cray*
Michael Crawford
Samantha Cribbet
Vilma Cueto-Dourson
Amanda Davenport Family

Jessica David
Devin Davidson
Noah Demerly
Philip Denning
Damon DiBari
Ms. Jill Dickert
Justine DiNapoli
W. Patrick Douglas*
Tina Doyle
Kaitlyn Driesen*
Thad Driscoll
Mr. and Mrs. Steven and J'Nelle Easley
Kristopher Edwards
Carrie Farmer-Rasmussen
Tiffany Michelle Findlay
Toriano and Maya Franklin
Laura Geisler
Rachel Geick
Anna Gise
Ms. Amy Givens
Sarah Goss

John Gradoville
Matthew Griffith
Michelle Durham Hammond
Guy Harmon
Ms. Kimberly Harris
Barbara Hauser
Ms. Katherine Hawk
Nick Healey and Emily Spracklen
Jessica Heaton
Michael Hermanson
Aleshia Hospelhorn
Sarah Huber
JoQuetta Hummons
Kevin Issler
Staci Jenkins
Mark Johnson
Aimee Fallon Johnson
Craig Jones
Jason Jonovski
David Jordan
Josh Juran
Adam and Chris Kahn

Samantha Keller
Jennifer Kelly
Kate and Michael Kennedy
Angela Noelle Kenney
Amit and Sabina Khemchandani
Evan Kormos
Kush Kotecha
Angela Krites
Katie LaFollette
Michael R. Lakin
Jennifer Laugle
Kei and Shannon Lawson
Garrett Leeson
Amber Lewis
Kristofer Lindqvist
William Lindsey
Dr. Kevin Liu
Lisa Loiselle
Kelly Low Geoppinger
Michael Lucia
Ms. Tiffany Luckey

| | | | | |
|----------------------------|-------------------------|----------------------|---------------------------------|----------------------------|
| Beena Mathew | Joseph Nichols | Susan Ross | Benjamin Spiegel | Amy Wiles |
| Evan Mathis | Jason Nickles | Robert J. Rouse | Nick Healey and Emily Spracklen | Kevin Wilhite |
| Michael McCarren | David and Megan Okun | Andrea Ruiz Rabadan | Suzanne Stautberg | Michael Williams |
| Amanda M. McDonald | Declan O'Sullivan | Katlin Rust | Mr. Joseph Stegbauer | Kevin Williams |
| Katherine McNeil | Sean Owens | Douglas Sackin | Joel and Lisa Stone | Ms. Chantell Wilson-Thomas |
| Alisha Merkel | Dr. Maria Palmieri | Gloria Samuel | Timothy Strayer | Mr. Andrew Wintering |
| Mrs. Catherine M. Millette | Daniel Paolo | Sarah Sanborn | Mr. Aaron Stucky | Joe Wohlleb |
| Ms. Alessandra Mirolo | Justin Payne | Shaquanna Sardin | Chad and Natalie Taake | Mrs. Jordan Wood |
| Dale and Jenny Mitchell | Mrs. Ashlei Peavie | Benjamin Schlagheck | Paul and Tricia Tomich | Adrienne Brooke Wyatt |
| Jordan Mock | Lauren and Justin Peter | Sarah Schmidt | Kelley Brandstetter Tracy | Tara York |
| Jacob and Jenna Morvay | Andy and Lori Poole | Robert Schottelkotte | Philip A. Tracy | Matt Yung |
| Amanda Mosteller | Christopher Pratt | Ms. Katie Schwarber | Brianna Trucco | Jennifer Zhang |
| Ms. Brooke Mullett | Bethany P. Recht | Andrew Schwartz | Brad Vaughan | Lissa Ziegelgruber |
| Meghan Mullikin | Laura Reckamp | Mr. Darius Scott | Jeremy Viltro | John & Kira Zimmerly |
| Eric Murphy | Keith Richburg | Megan Shaffer | Sarah Vogt | Sarah Zonio |
| Mrs. Anne Murphy | Ryan Richey | Lixin Shen | Vince Ward | Mr. Michael Zurek |
| James Murray | Mr. Eric Ries | Andrea Shepard | Amy Weber | |
| Nicole and Will Nan | Grant Riley | Erik Sieve | Mr. Aaron Wells | |
| Jennifer and Kirby Neumann | Alexandra C. Rock | Jacob Sieving | Brittney Westall | |
| | Jessica Rohrkemper | Matthew Simpson | Ryan Whiteside | |
| | Scott Rose | Jennifer Simpson | Bradley Wilder | |
| | Richmond Rosen | Ms. Courtney Smith | | |

* Denotes ArtsWave YP Committee Member

2020 Campaign Special Thanks

Our thanks to these companies, organizations and individuals for their additional support:

- **Jill McGruder** and the **Western & Southern Financial Group** team for their outstanding leadership in steering the Campaign through uncertain waters and generous Company Challenge Match for new and increased support of the campaign.
- **Enquirer Media, Cincinnati Business Courier and Hubbard Radio** for their generous media support throughout the Campaign.
- **Macy's** for its generous sponsorship of ArtsWave Days, in the midst of pandemic-related cancelations.
- **The Cincinnati Reds and FC Cincinnati** for being incredible partners for ArtsWave donor benefits.
- **LPK** for its creativity and strategic counsel in refreshing the ArtsWave brand and developing our Campaign theme.
- **Jeff Thomas, Kent Shaw, Brett Stover, Pam Kravetz, Rawnica Dillingham, Kathy Nardiello, The Perfect Brew and Jeff Thomas Catering** for their in-kind support of the **Everything But The House** auction to benefit the Arts Vibrancy Recovery Fund.
- Artist advisors **Carolyn Wallace and Kick Lee, Cincinnati Arts Association** and the **Flow Steering Committee** for helping us debut the Flow performance series.
- **The Elise Eaton Allen Performing Arts Fund of the Greater Cincinnati Foundation** for supporting the Bob Allen Lunch program.
- **Kathy Merchant** for leading the creation of the book "Imagineers • Impresarios • Inventors: Cincinnati's Arts and the Power of Her," and her involvement in Cheers to the Arts and Women's Leadership Roundtable events.
- **Fretboard Brewing, the Kyle Hackett Trio, Drew Lachey, Cincinnati Ballet's Victoria Morgan, Taste of Belgium chef Kira Robinson, Cincinnati Pops conductor John Morris Russell, Gary Sandy and Kathy Wade** for participating in our first-ever virtual fundraising event, Cheers to the Arts.
- **CET**, our partner in creating our arts impact video series, as well as **Mills James** for creating our Campaign video and BLINK® iPhone donation stations.
- **Fretboard Brewing Company** for their partnership in developing this season's "Wave Maker" collaboration beer.
- **Game Day Communications** for providing ongoing PR support and event help during BLINK® and ArtsWave Days.
- **Rhinegeist Brewery** for hosting our Blueprint Lunch & Learn series.
- **Friends of Music Hall** for their partnership in creating the Music Hall for Two: Outside tour benefit.
- **Dewey's Pizza** for their sponsorship of ArtsWave's Elevate the Arts donor event.
- **Shane Starkey & Thompson Hine** for their sponsorship of BOARDway Bound.
- **Doug Hall** for developing the Hook & Hastings Bourbon, aged with wood from Music Hall.
- **A HUGE thank you to all the arts and culture groups** that provided venues, activities, speakers, tickets and so much more to make the ArtsWave Community Campaign and events a success.
- **The nearly 1,000 people who volunteered their time and talent** to raise \$11.8 million to support the arts in Greater Cincinnati, and to the 39 individuals on our grant review committees who spent hundreds of hours reviewing applications and making recommendations for impact-based grants throughout the region.

2020

Endowment Partners

Future Endowment, Bequest and Planned Gift Commitments

Anonymous (10 donors)

Henrietta Barlag
(The Carnegie, Cincinnati Ballet, Cincinnati Landmark Productions, Cincinnati May Festival, Cincinnati Opera, Cincinnati Playhouse in the Park, Cincinnati Shakespeare Company, Cincinnati Symphony Orchestra, Contemporary Arts Center, Ensemble Theatre Cincinnati, and Know Theatre of Cincinnati)

Shannon and Lee Carter*

Raymond R. and Marylyn Clark
A. Burton Closson, Jr.*
Charlene F. Combs
Anne Levin DeLyons
Caroline S. DeMar
Susan L. Dorward
Joseph H. and Louise Head
Mary McCullough-Hudson and Greg Hudson
Isabelle F. Hugo (Taft Museum of Art)
Susan M. Ingmire

Jan and Jay Kalagayan
Susan J. Kellogg
Patrick M. Korb
Susan S. Laffoon
Whitney R. and Phillip C. Long (Taft Museum of Art)
Christine Gould Meyer
Marjorie Motch
T. Stephen and Lynn Phillips
Ruth Rounding
Lisa Sauer and Jon Moeller
Neal G. Schulte, CPA/CFP

Elizabeth C.B. and Paul G. Sittenfeld*

Mary Stagaman and Ron Kull
Mr. and Mrs. John Steinman
Carol G. Talbot
Drs. Barry D. & Karen Britt Walker (To fund arts opportunities for disadvantaged youth)
Paul H. and Jo Ann T. Ward (Cincinnati Playhouse in the Park)



Legacy and Endowment Gifts

The Citizens of Cincinnati, to match the original endowment gift of Charles P. and Anna Sinton Taft, which established the Cincinnati Institute of Fine Arts in 1927

Anonymous (Eight donors to ArtsWave)

Anonymous (In honor of the 75th Anniversary of the Cincinnati Institute of Fine Arts)

Anonymous (Cincinnati Symphony Orchestra)

Anonymous (Cincinnati Art Museum)

Anonymous (Two donors, Cincinnati Opera)

Anonymous (Three donors, Taft Museum of Art)

Anonymous (Taft Museum of Art, in support of on-going garden expenses)

Elise Eaton Allen Performing Arts Fund*

Estates of Blanche and Rebekah Alter (Cincinnati Symphony Orchestra and Taft Museum of Art)

Mrs. Robert J. Amidon

Claire U. Atkins Trust

Francis A. Benus (Cincinnati Symphony Orchestra)

Alma Betscher and Edna B. Outcalt Memorial Fund (Cincinnati Symphony Orchestra)

Joanne C. Blakely

Estate of Thomas F. Buck

Joseph Burton

W. Rowell Chase

Estate of Laura L. Clark

Lucinda Closson Memorial Fund

Stanley and Frances D. Cohen (Taft Museum of Art Lecture Series)

Estate of Betty J. Dannenfeler

Anne Elkins Didrighsen, in memory of Felix and Weta Mae Elkins (Cincinnati Playhouse in the Park)

Estate of Edwin P. Dundon

Estate of Helen T. Ehlers (Taft Museum of Art)

Estate of William Donald Ehlers

Estate of Margaret Embshoff

Edith T. Emerson

Estate of Thomas J. Emery (Cincinnati Symphony Orchestra)

Estate of James M. Ewell

Estate of Natalie Feld, in memory of Eleanor Feld (Cincinnati Opera and Cincinnati Institute of Fine Arts)

Franklin L. Folger Trust

Herbert G. French

Estate of Ruth Friedman

John W. Gantt, Sr.

Elizabeth D. Goldsmith

Estates of Dr. Ralph Good and Ms. Alice M. Good

Emma Freund Gwinner Trusts

Estate of Helen B. Hagner

Joseph B. Hall

Frank T. Hamilton, Jr. Trust

Estate of Mary Hanna (Cincinnati Symphony Orchestra)

Estate of Eleanor Hazelton

Martin Hemsworth Estate

John Z. Herschede

John L. Holden

Estate of Ray Huseman

Estate of Mr. & Mrs. Louis John Johnen

Mrs. Morse Johnson

Estate of Edmund L. Jones

Estate of Bertrand B. Kahn (To fund college scholarships)

Cathryn Keck (Cincinnati Art Museum and Taft Museum of Art)

Estate of Dolores Lucille Keppler

Mrs. Harold J. Kersten

Dorothy M. M. Kersten Trust, U.S. Bank Trustee (Arts Services Office and ArtsWave Annual Campaign)

Willard and Patricia Kissell

Mr. & Mrs. William McD. Kite, in memory of Mrs. Lucien Wulsin (Cincinnati Symphony Orchestra)

Mr. & Mrs. William G. Kittredge

Estate of Jacqueline Klein (Taft Museum of Art)

Estate of Rosalie Kramer (Cincinnati Symphony Orchestra)

Estate of Marjorie F. Krantz

Estate of Margaret A. Kunz

Mr. & Mrs. Lawrence H. Kyte (Cincinnati Opera)

Estate of Betty P. Leach (Taft Museum of Art)

William and Marjorie Liggett Trust

Ms. Frances R. Luther, in memory of Howard B. Luther

Estate of Edgar J. Mack, Jr.

John L. & Ray Marie Streng Markstein

Estate of George Melber

Estate of Mildred Meloy

Mary L. Meyer and William D. Meyer

Estate of Walter H. Meyer

Estate of Birdie S. Neuffer

Estate of Philip and Barbara Nightingale

Estate of Louis H. Nippert (Taft Museum of Art)

Maurice E. Oshry (ArtsWave and Cincinnati Opera)

Estate of Rosalie Phillips (Cincinnati Symphony Orchestra)

Estates of Marion and Dorothy Rawson (Cincinnati Art Museum and Cincinnati Symphony Orchestra)

Legacy and Endowment Gifts, Continued

George Rieveschl Foundation
Estate of Charles Scott Riley III (Taft Museum of Art)
Estate of Margaret Raff Robinson (ArtsWave and Taft Museum of Art)
Estate of Rosa F. & Samuel B. Sachs (To establish the Sachs Fund Prize)
Estate of Irene Saxton
Estate of Harry J. Schaleman (Arts Services Office)
Jacob G. Schmidlapp Trust, Fifth Third Bank, Trustee (To match an NEA grant for children's education programs)
Frederick B. Schroeder II
Estate of Helen D. Schroeder
Estate of Mary Louise Schroth
Estate of Eugene P. Searfoss
Estate of Marjorie Senior Mark and Jane Serianne
Estate of John K. Sherman
Estate of Joan Stark
Estate of Joseph L. Steiner
Estate of S. Charles and Sue B. Straus
Estate of Anna Sinton Taft (To transform the Baum-Longworth-Taft House into the Taft Museum of Art)
Estate of Mr. & Mrs. Charles P. Taft (To establish the Cincinnati Institute of Fine Arts and the Taft Museum of Art and to support the Cincinnati Symphony Orchestra)
Rosalyn Taft Gift
Estate of Morley P. Thompson
Estate of Charlotte S. Toewater
Estate of Patricia A. Torok
Estate of Betty V. Tuttle
Albert W. Vontz, Jr.
Sallie Robinson Wadsworth (ArtsWave and Taft Museum of Art)

Ruth V. Wagner Trust
Jane M. Wall
Estate of Marie Watts
Estate of Charlotte Froendhoff Whitmore
Estate of Lucile W. Weibel (Cincinnati Symphony Orchestra)
Estate of Ruth C. Wilkerson
Gene M. Wilson
Estate of Elinor M. Winchester
Estate of Dorothy C. Woodruff
Harris K. and Alice F. Weston
Richard P. Windisch and Margaret Van Goeben (Cincinnati May Festival)
Eugene Wulsin

Endowment Gifts from Foundations and Other Entities

The William P. Anderson The William P. Anderson Foundation
Commonwealth Hotels, Inc.—The Metropolitan Club of Covington, Kentucky (For Associate Members Endowment)
H.G., H.F. and L.T. Dornette Foundation, Fifth Third Bank and Stan Koller, Co-Trustees (For Associate Members Endowment Fund)
The Thomas J. Emery Memorial
The Ford Foundation (Cincinnati Symphony Orchestra)
LKC Foundation/Mrs. Charles O. Carothers (In honor of the 75th Anniversary of the Cincinnati Institute of Fine Arts)
E. W., H. B. and F. R. Luther Charitable Foundation (To establish the Associate Members Endowment Fund)
National Endowment for the Arts (For children's education programs)

The L&L Nippert Charitable Foundation (In honor of the 75th Anniversary of the Cincinnati Institute of Fine Arts)
The Daniel and Susan Pfau Foundation (For the Associate Members Endowment Fund)
Robert H. Reakirt Foundation, PNC Bank, Trustee
Robert C. Schiff Fund
Louise Taft Semple Foundation, in memory of Louise Taft Semple (Directorship of Taft Museum of Art)
Eleanor and Charlie Taft Fund

Elsie H. Warrington, Suzanne M. Warrington and the Warrington Family Foundation, in memory of John T. Warrington (Taft Museum of Art Exhibition Endowment)

** Through a fund at the Greater Cincinnati Foundation*

We compile the above rosters with care. If your name has been omitted or misspelled, please accept our apology. We encourage you to bring any errors or omissions to our attention.



Luminaria at the Cincinnati Museum Center for the #ArtsUnit Campaign kickoff event
 Photo credit: Wendell Gibbs



A participant creates art in the guided virtual Camp cARTwheel
 Photo credit: Brian Downing



Lumen-Wall 2.0, an installation by Francisco Cardona and Billy Bryant at BLINK® 2019
 Photo credit: Bergette Photography



BLINK is a trademark of the Carol Ann and Ralph V. Haile, Jr./U.S. Bank Foundation exclusively licensed by the Cincinnati USA Regional Chamber



20 East Central Parkway, Suite 200
Cincinnati, OH 45202

513.871.ARTS

For more information, visit artswave.org