



Cincinnati Ballet's
CincyDance! in
Washington Park




artswave

For more information, visit www.ArtsWave.org



#ISUPPORT artswave

Annual Report 2017



...the convener, planner, promoter and funder of Cincinnati's arts

As the nonprofit arts agency serving the Greater Cincinnati and Northern Kentucky Region, ArtsWave was the first and continues to be the largest community arts campaign in the nation. Strong funding has allowed Cincinnati's arts and culture scene to become a national draw and regional asset, creating a ripple effect of economic and community benefits. ArtsWave supports the work of over 100 arts organizations, school outreach programs, festivals, community centers, neighborhoods and various collaborations through impact-based grants. Building on nearly a century of innovation, today ArtsWave is also driving collaborative marketing and new technologies to increase public awareness and engagement in the arts.

BLUEPRINT

**for Collective
Action in the
Arts Sector**

**Vision: A More Vibrant
Economy and a More
Connected Community
for All**



ARTS PUT CINCINNATI ON THE MAP

GOAL: To be a more competitive region for talent attraction by leveraging arts experiences perceived as extraordinary
(see page 15 for more)



ARTS DEEPEN ROOTS IN THE REGION

GOAL: To deepen feelings of engagement and connection to the community by widening participation in arts experiences, especially those that resonate with adults age 40 and younger
(see page 19 for more)



Thanks to the leadership and enthusiasm of our 2017 Campaign Cabinet, its Chair Tim Elsbrock, and ArtsWave's Board of Trustees led by Lisa Sauer – not to mention the support of thousands of community members and volunteers – the wave of impact from Greater Cincinnati's arts is bigger than ever.

During the 2017 ArtsWave Community Campaign, nearly 40,000 donors came together to raise \$12,500,000 to support 125 arts organizations across the region. In so many ways, these organizations drive toward the broad goals spelled out in ArtsWave's Blueprint for Collective Action in the Arts Sector. They use ArtsWave dollars to put Cincinnati on the map with their distinctive programs, deepen the roots of our region's residents, bridge cultural divides, enliven neighborhoods, and fuel creativity and learning. With these shared objectives, the arts

Riding a wave of community impact through the arts

in Cincinnati are clearly contributing to the region's economic and social vibrancy.

In aggregate, ArtsWave-funded organizations provided 185,597 touch points in arts integration, arts enrichment and arts instruction for students in 15 counties. They attracted more than one million people to their exhibits, performances, workshops and tours. Thanks to a new partnership with the Cincinnati USA Regional Tourism Network, ArtsWave is helping boost those attendance numbers even higher. For example, arts audiences from outside a 100-mile radius of Cincinnati grew by 3% in fall of 2016, the period coincident with our first-ever jointly run cultural tourism marketing campaign. This past year, ArtsWave made experiencing the arts even more compelling by doubling the number of ArtsPass offers. Through this expanded program, and by welcoming former members of Enjoy the Arts under our umbrella, the ArtsWave Young Professionals group surpassed 5,000 members for the first time. In another first, the ArtsWave Women's Leadership Roundtable exceeded \$1,000,000 in combined giving.

These accomplishments and many others were essential in helping the 2017 Campaign reach new heights, and we say a heartfelt "thank you" to everyone involved and to everyone who contributed. You are part of a strong current – a philanthropic energy around the arts in Cincinnati that has grown in momentum for nine decades.

In 1927, the founders of our organization, Charles and Anna Sinton Taft, shaped a forward-looking vision. They saw a region that would distinguish itself and derive economic and social value from arts and culture. As we anticipate our centennial anniversary in 2027, we celebrate how this vision continues to be realized and reasserted. As our founders did before us, we look to the community to help define new opportunities and new tools to connect ever-more people to the region's powerful arts ripple effect.

Today, ArtsWave leads the way for a future of arts impact and innovation in the decades to come.

ALECIA KINTNER
President & CEO



ARTS BRIDGE CULTURAL DIVIDES

GOAL: To promote cross-cultural understanding by increasing the availability and accessibility of arts experiences that include and represent all races and ethnicities
(see page 21 for more)



ARTS ENLIVEN NEIGHBORHOODS

GOAL: To enhance the vibrancy of communities, in particular those underserved and/or undergoing revitalization, by increasing accessibility and availability of arts organizations and experiences across the region
(see page 22 for more)



ARTS FUEL CREATIVITY & LEARNING

GOAL: To promote development of 21st century skills by ensuring all youth in the region, particularly those underserved, have access to meaningful arts opportunities
(see page 27 for more)



IMPACT AND INNOVATION EVOLUTION

2008 - 2011

Bold Transformation

Data, trend analysis and research led the Fine Arts Fund to reinvent itself as ArtsWave for a future of relevance and sustainability.

78%

1 DATA
ArtsWave's citizen donors are not the same people as local arts consumers. 78% of ArtsWave donors had not visited one of the major arts institutions in the past five years.

2 TREND
Corporate funders asking "What is the quantifiable impact of our investment in the arts?"



3 RESEARCH
The public values two key community benefits of the arts – regardless of personal experience.

4 INSIGHT
Citizen donors saw Fine Arts Fund brand as reinforcing negative stereotypes about the arts: expensive, exclusive, old-fashioned.

2013

Building Tools and Capacity

1 WORKSHOPS
ArtsWave convenes arts organizations in "New Pathways" – year-long workshops on adaptive change and innovation facilitated by EMC Arts.

2 ENGAGEMENT
ArtsWave commissions Arts Engagement research, revealing local correlations between arts participation and civic engagement.

3 MEASUREMENT
Arts sector responds to new methods and training for data-enabled impact measurement and evaluation.

2015

Charting a Path

to a more connected and vibrant community through the arts



1 BLUEPRINT INTRODUCED
ArtsWave introduces the Blueprint for Collective Action in the Arts Sector, a 10-year plan to drive collective progress toward key community goals.

2 CINCY ARTS GUIDE
ArtsWave unveils CincyArtsGuide, a comprehensive online arts calendar.

3 ARTS ATLAS
ArtsWave builds Arts Atlas, a geographic information system for mapping arts impact.

5 PLACEMAKING
ArtsWave supports arts programs in every public school in LISC's PlaceMatters neighborhoods.

4 The ArtsWave ArtsPass program expands as an employee engagement resource.

6 Formation of ArtsWave's Circle of African American Leaders for the Arts.

2017

Bridging Past and Future

1 ArtsWave Young Professionals affinity group surpasses 5K members for the first time.

2 ArtsWave folds young professionals organization Enjoy the Arts into ArtsPass and doubles the number of ArtsPass deals.

3 Women's Leadership Roundtable members contribute \$1M in aggregate to the campaign for the first time.

4 BOARDway Bound, ArtsWave's signature arts board training program, relaunches after a year-long hiatus.

2012

Campaign Growth

ArtsWave Community Campaign begins multi-year record growth streak

1 NEW NAME AND BRAND

ArtsWave brand designed to be inclusive, innovative, and inspiring to citizen donors.



2 NEW MISSION/ GRANTMAKING PROCESS

Arts Community Impact Agenda – two goals aligned to what the public values:
1) More Connected Community;
2) More Vibrant Economy.

3 INCREASED SUPPORT

In the aftermath of the Great Recession, new brand and agenda helps to rebuild the Community Campaign, increasing steadily to \$12.5 million in 2017.

4 IMPACT & INNOVATION

Arts organizations began learning to measure their community impact and innovating new ways to increase that impact.

2014

Small Experiments with Radical Intent Yield Lasting Rewards

1 CINCYSINGS

CincySings premiers and becomes a model employee engagement initiative.

2 TOAST TO THE ARTS

Toast to the Arts brings restaurant partners and their customers to the table.

3 NEW PARTNERSHIPS

New partnerships with the Cincinnati Reds and CVG bring the arts into unexpected places.

4 AFFINITY GROUP

Formation of ArtsWave Women's Leadership Roundtable.

5 PLACEMAKING

ArtsWave supports creative placemaking in LISC's PlaceMatters neighborhoods.

2016

Putting our Blueprint into Action

1 ARTSWAVE TIDAL

ArtsWave Tidal, a weekend innovation lab, launches with help from Cintrifuse and StartupCincy.



2 STEM RESOURCE

ArtsWave, Greater Cincinnati Alliance of Arts Educators and Greater Cincinnati STEM Collaborative co-create CincyArtsAndSTEM.org for educators and families.



3 SAMPLER AT 30

Macy's Arts Sampler, presented by ArtsWave, celebrates 30th anniversary with 100 events in 36 venues across the region.

4 PLACE MAKING

ArtsWave and LISC build a Creative Placemaking Network of arts and community organizations facilitated by Design Impact.

5 NEW GRANTS

ArtsWave introduces Neighborhood Arts & Festival Grants and ArtsWave YP Grants for the first time.

6 ArtsWave introduces new multicultural arts promotions.

7 TOURISM PROMOTION

ArtsWave and the RTN begin to co-fund multi-year, multi-million-dollar cultural tourism marketing initiative.

5 ArtsWave and arts partners begin collaborating to create a shared patron database, The Hub.



6 With Source Cincinnati, ArtsWave intensifies effort to put Cincy on the Map through focused media outreach.

7 ArtsWave awards first-ever Cultural Tourism Product Development Grants.

8 ArtsWave presents Music Hall + More celebration to commemorate new cultural facilities.

9 CAMPAIGN HITS \$12.5MM PLUS \$1MM for arts marketing challenge.



WHAT DOES A RECORD-BREAKING

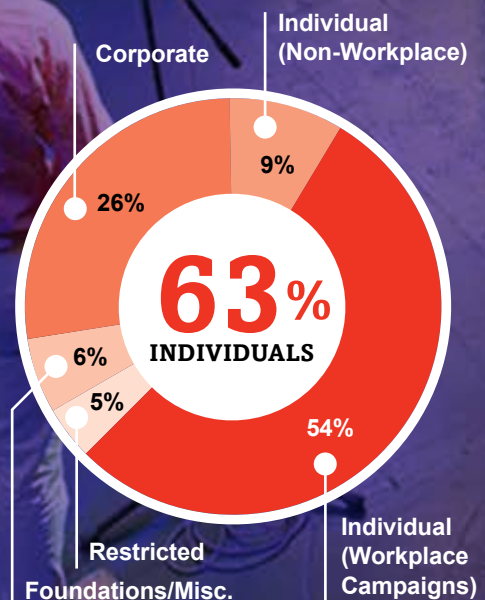
\$12.5M

Here are a few impressive numbers from the 2017 Community Campaign

NEARLY
40,000
INDIVIDUAL
DONORS

439
PARTICIPATING
COMPANIES

2017 SOURCES OF SUPPORT



million

LOOK LIKE?

CAMPAIGN HISTORY: A RECORD-BREAKING YEAR



*designates Arts Marketing, see page 10.



HOW OUR COMMUNITY RAISED MORE THAN EVER

The 2017 Community Campaign was record-breaking.



YP Kick Off event at Memorial Hall
Photo Credit: Amy Elisabeth Photography



Women's Leadership Symposium
Photo Credit: Mikki Shaffner



HERE ARE SOME OF THE HIGHLIGHTS:

Leadership Donors

Leadership Donors are those who contribute \$1,500 or more. Through the ArtsBreak luncheon series, members receive an inside perspective on the leaders in the arts and business community who are shaping our region's landscape in unique and compelling ways. In the past year, members were introduced to new leaders, renewed spaces, and places that are putting Cincinnati on the map. ArtsBreak is made possible by the Helen G., Henry F., and Louise Tuechter Dornette Foundation, Fifth Third Bank, Trustee.

Women's Leadership Roundtable

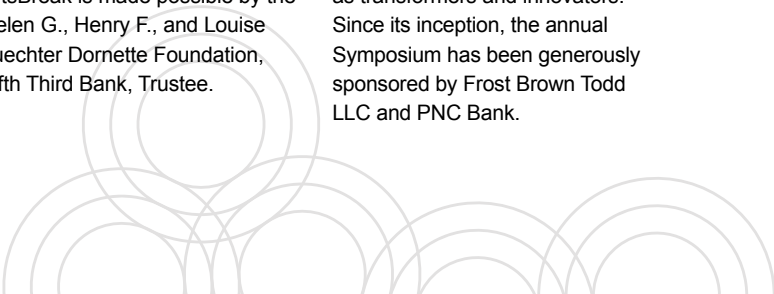
The Women's Leadership Roundtable hit a major milestone this year, raising over \$1,000,000 for the Community Campaign thanks in great part to a challenge match from the Charlotte R. Schmidlapp Fund, Fifth Third Bank, Trustee. In May, ArtsWave hosted the third annual ArtsWave Women's Leadership Symposium. Panelists spoke about women as transformers and innovators. Since its inception, the annual Symposium has been generously sponsored by Frost Brown Todd LLC and PNC Bank.

CAALA Events

The Circle of African American Leaders for the Arts brings together men and women in our community who believe that the power of the arts can bridge cultural divides. In 2017, CAALA hosted two social events that coincided with Smokey Robinson performing with the Cincinnati Pops in January and Cincinnati Shakespeare Company's *A Raisin in the Sun* in March.

Young Professionals

Using the power of arts to deepen roots in the region, the Young Professionals affinity group connects donors 40 years of age and younger through networking and exclusive experiences. At their February Kick Off at Memorial Hall, hundreds of YPs celebrated the arts with performances and experiences from organizations supported by ArtsWave's YP grant program. This year, membership in the YP affinity group exceeded 5,000 for the first time.





Through new and strengthened partnerships, the campaign demonstrated how powerful the arts ripple effect is in uniting a community.

Bi-Okoto at Macy's Arts Sampler
Photo Credit: Mikki Shaffner



CincySings winners 98.6 Degrees
Photo Credit: Mikki Shaffner



Tidal: Arts x Tech
Photo Credit: Mikki Shaffner



Toast to the Arts event at MadTree Brewing Co.

Macy's Arts Sampler

In February, the 31st Macy's Arts Sampler drew 10,000 people to 90 free performances at 26 venues all over the tri-state area, sponsored by United Dairy Farmers. The weekend ended with an arts-filled day downtown, including a special performance of *The Wizard of Oz* by The Children's Theatre of Cincinnati, sponsored by Dewey's Pizza.

CincySings, presented by Accenture

ArtsWave's nationally recognized choral competition featured 11 regional companies this year. Nearly 1,000 people attended to see the finalists compete at the Aronoff Center for the Arts, emceed by Drew Lachey, founder of Lachey Arts and member of the pop group 98 Degrees. The winners proved to be just a bit hotter: Christ Hospital's 98.6 Degrees.

ArtsWave Tidal: Arts x Tech

The second annual ArtsWave Tidal brought more than 50 participants to team up and tackle the challenges facing the arts sector with innovative solutions. In a surprise outcome, two teams were awarded grants to make their visions a reality: Team Aria for their instrument tracking system, and Team smART for their resource-sharing and volunteer incentive solution.

Toast to the Arts

Over 50 local restaurants, bars, breweries and other establishments teamed up with ArtsWave this year to participate in Toast to the Arts, allowing their patrons to enjoy their favorite drinks while giving back to the arts community. For the second year, Listermann and Blank Slate Brewing Companies collaborated on a limited-edition beer called Roots to support the Toast to the Arts initiative.

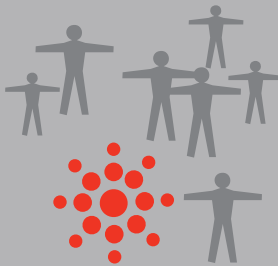
A WAVE OF ARTS



SUPPORTED BY artswave

A ripple effect of benefits enlivens neighborhoods and fuels creativity and learning.

**1 Million+
IN ATTENDANCE
FOR ARTS EVENTS**



**15
COUNTIES
SERVED**

with arts integration,
arts enrichment and
arts instruction



**185,597
ARTS EDUCATION
TOUCH POINTS**

- 50,658 in all 53 schools of the Cincinnati Public School District
- 53,336 in Boone, Kenton and Campbell counties in Kentucky

**500+
SCHOOLS
SERVED**



Supporting more than 125 arts organizations, ArtsWave creates vibrancy and connects 45 ZIP codes across the region.

CENTRAL

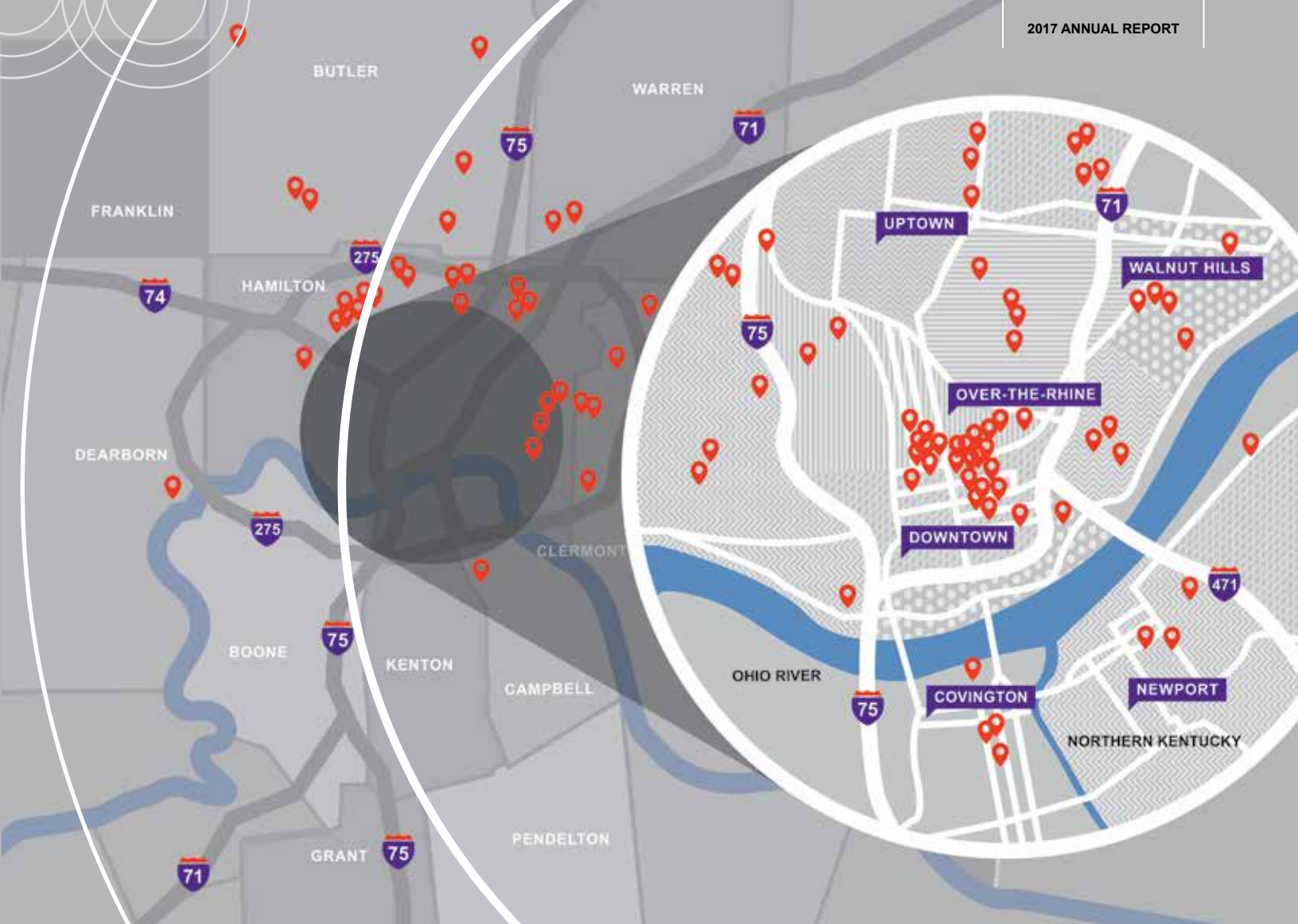
- American Sign Museum
- Art of the Piano
- Art on the Streets
- Arts Revival of College Hill
- ArtWorks
- Bi-Okoto Cultural Institute
- Black Folks Make Movies
- Browngirls Productions
- Carnegie Center of Columbia Tusculum
- Center for Independent Living Options: Art Beyond Boundaries
- Chase Public
- Cincinnati Art Museum
- Cincinnati Arts and Technology Center
- Cincinnati Arts Association

- Cincinnati Ballet Company
- Cincinnati Black Theatre Company
- Cincinnati Boychoir
- Cincinnati Chamber Opera
- Cincinnati Chamber Orchestra
- Cincinnati Children's Choir
- Cincinnati May Festival
- Cincinnati Men's Chorus
- Cincinnati Museum Center
- Cincinnati Opera Association
- Cincinnati Playhouse in the Park
- Cincinnati Shakespeare Company
- Cincinnati Song Initiative
- Cincinnati Soundbox

- Cincinnati Symphony Orchestra
- Cincy Stories
- City Gospel Mission
- City of Cincinnati
- City Silence
- Clifton Cultural Arts Center
- Clifton Town Meeting
- Community Matters concert:nova
- Constella Cincinnati Festival of Music and Fine Arts
- Contemporary Arts Center
- Contemporary Dance Theater
- Cradle Cincinnati
- Creative Aging Cincinnati
- Dramakinetics of Cincinnati

- Educational Theatre Association
- Elementz
- Ensemble Theatre of Cincinnati
- Global Music & Wellness
- Greater Cincinnati Chinese Music Society
- Heroes Rise
- Imani Family Center
- Jazz Alive
- Juneteenth Cincinnati
- Keep Cincinnati Beautiful
- Kennedy Heights Arts Center
- King Studios
- Know Theatre of Cincinnati
- Learning Through Art
- Linton Chamber Music

- Madisonville Community Urban Redevelopment Corporation
- Mam-Luft&Co. Dance
- Manifest Creative Research Gallery and Drawing Center
- Melodic Connections
- Memorial Hall
- The Mercantile Library
- The Mini Microcinema
- MoonBull Studio
- MYCincinnati
- My Nose Turns Red Theatre Company
- New Edgecliff Theatre
- Over-the-Rhine Community Housing
- Peaslee Neighborhood Center



Pones
 POPP=D ART
 Price Hill Will
 Queen City Opera
 Roundabout Opera for Kids
 School House Symphony
 Seven Hills Neighborhood Houses
 SOS ART
 South Cumminsville Community Council
 St. John's Unitarian Universalist Church
 Taft Museum of Art
 Tristate Veterans Community Alliance
 University of Cincinnati, College-Conservatory of Music
 Urban Appalachian Community Coalition

Visionaries + Voices
 Vocal Arts Ensemble of Cincinnati
 Walnut Hills Redevelopment Foundation
 Wave Pool
 Weston Art Gallery
 WordPlay Cincy
 Young Professionals' Choral Collective

EAST

Artsy Fartsy
 The Children's Theatre of Cincinnati
 Clermont Festival Chorale
 Mariemont City Schools
 Woman's Art Club of Cincinnati

INDIANA

Dearborn Highlands Arts Council

NORTH

ArtsConnect-Springfield Township Arts and Enrichment Council
 Blue Ash-Montgomery Symphony Orchestra
 Fitton Center for Creative Arts
 Greenhills Community Investment Corporation
 Jewish Federation of Cincinnati
 Lynx Project
 Middletown Lyric Theatre
 Oxford Community Arts Center
 Pyramid Hill Sculpture Park and Museum

Sharonville Fine Arts Council
 UC Blue Ash College
 Village of Silverton, Ohio
 The Wyoming Fine Arts Center

NORTHERN KENTUCKY

Augusta Art Guild
 Behringer-Crawford Museum
 The Carnegie
 Center for Great Neighborhoods
 The Dayton Kentucky Civic Activities Board
 Kentucky Symphony Orchestra
 Lineillism
 NKU Scripps Howard Center for Civic Engagement

Northern Kentucky Community Action Commission
 Showbiz Players

REGIONAL

CET
 Cincinnati Public Radio
 Cincy Blues Society
 Film Cincinnati

WEST

BLOC Ministries
 Cincinnati Landmark Productions
 Madcap Productions Puppet Theatre
 MUSE, Cincinnati's Women's Choir



PARTNERSHIP WITH REGIONAL TOURISM NETWORK CREATES \$14M REVENUE INCREASE

ArtsWave's collaboration with the Regional Tourism Network achieved powerful results in its first year, increasing hotel occupancy, demand and revenue and boosting the vitality of our region. The campaign garnered increased online visitation and engagement by arts and cultural travelers from a 100-500 mile footprint in cities such as St. Louis, Charlotte, Atlanta, Nashville and Milwaukee.

ArtsWave would like to thank the individuals and companies whose new and continuing arts marketing support have made the Cultural Tourism Awareness and Engagement Initiative a success:

Anonymous	Cincinnati Arts Association	Cincinnati Symphony Orchestra	Karen F. Maier and Delane Starliper	Rosemary and Mark Schlachter
ArtsWave Endowment Funds	Cincinnati Ballet Company	Contemporary Arts Center	May Festival	Dudley S. Taft
The Carol Ann and Ralph V. Haile, Jr./U.S. Bank Foundation	Cincinnati Museum Center	Ensemble Theatre Cincinnati	Ohio Valley Foundation, Fifth Third Bank, agent	Taft Museum of Art
Chris and Karen Bowman	Cincinnati Opera Association	The Landen Family Foundation, Inc.	PNC Charitable Trusts	Thomas J. Emery Memorial
The Children's Theatre of Cincinnati	Cincinnati Playhouse in the Park	The Louise Taft Semple Foundation	Rosenthal Family Foundation	Western & Southern Financial Fund
Cincinnati Art Museum	Cincinnati Shakespeare Company		Thomas R. Schiff	

LEADERSHIP IN ACTION



2018 Campaign Chair
Jim Henning with 2017
Chair Tim Elsbrock
Photo Credit: Mikki Shaffner



Campaign Chair Tim
Elsbrock at the ArtWorks
"Armstrong" Mural
Dedication

Board of Directors

2016-2017 ARTSWAVE TRUSTEES

OFFICERS:

Lisa Sauer,

Chair

Teresa Tanner,

Vice Chair

Andre S. Valentine,

Secretary

James M. Zimmerman,

Treasurer

Alecia T. Kintner,

President & CEO

TRUSTEES

Linda Antus

Ronald T. Bates

Bob Bonder

Laura N. Brunner

Christopher A. Carlson

Eric K. Combs**

Alfonso Cornejo

Dianne Dunkelman

Timothy Elsbrock +

Robin Hirsch Everhart

Kenneth Goldhoff

Melvin J. Gravely II**

Trey Grayson

Gerald H. Greene +

Delores Hargrove-Young

Andrew T. Hawking

Mark Heimbouch

Jim Henning

Chris Henry +

Francie Hiltz +

J. Mark Holcomb +

Gary T. "Doc" Huffman +

J. B. Kropp

Michael R. McAlevey**

Candace S. McGraw

Thomas G. Merrill

David S. Meyer**

Jon Moeller +

Evans N. Nwankwo

Chris Ostoich

Gil Phipps

R. Michael Prescott**

Jim Price

Jack Rouse +

Piyush Singh

Mary Stagaman

J. Shane Starkey

Matthew Stautberg

Don Stock

George H. Vincent**

George B. Wilkinson +

Jodi Woffington

LIFE TRUSTEES

Otto M. Budig, Jr.

Lee A. Carter

Raymond R. Clark

A. B. Closson, Jr.

Nancy Heffner Donovan

Joseph H. Head, Jr.

John J. Kron

Susan S. Laffoon

Daniel W. LeBlond

Mitchel D. Livingston

Richard H. Rosenthal

Thomas R. Schiff

Edgar L. Smith, Jr.

Peter S. Strange

Dudley S. Taft

Ellen G. van der Horst

** Executive Committee

+ Ex-Officio

2017 Cabinet Members

CHAIR

Timothy A. Elsbrock
 President
 Fifth Third Bank,
 Cincinnati

Bob Balogh,
 Paycor

Julie Calvert,
 Source Cincinnati

Dave Custer,
 Keating, Muething &
 Klekamp

Joe Desch,
 OneTouchPoint

Dr. Thomas DeWitt,
 Cincinnati Children's
 Hospital Medical Center

Thad Driscoll,
 Frost Brown Todd, LLC

Dan Feldmann,
 Fifth Third Bank

Pat Frew, Covington
 Business Council

Agnes Godwin Hall,
 Macy's

Jim Harkin,
 FRCH Design Worldwide

Matt Hollenkamp,
 St. Elizabeth Healthcare

Steve Kenat,
 GBBN Architects

Damien Lass, Accenture

Ann Munson Steines,
 Macy's

Stephanie Murphy,
 Cincinnati Financial Corp

Lou Nazir,
 Macy's

Nathan Paszczykowski,
 Fifth Third Bank

Barbara Perez, YWCA

Monica Posey,
 Cincinnati State Technical
 & Community College

Mike Sewell,
 Cincinnati Financial
 Corporation

Kelly Soller,
 Fifth Third Bank

Tim Steigerwald,
 Messer Construction

Joel Stone,
 Fifth Third Bank

Tori Sunderman,
 Cushman & Wakefield

Jim Vance,
 Western &
 Southern Financial Group

Marco Ziegler,
 Accenture



2018 Campaign Chair Jim Henning, ArtsWave President and CEO Alecia Kintner, Board Chair Lisa Sauer and 2017 Campaign Chair Tim Elsbrock at the 2017 Community Campaign finale



Residential Volunteers



Board Chair Lisa Sauer



ArtsWave Staff at the 2017 Campaign Finale
 All photos this page,
 photo credit: Mikki Shaffner

ArtsWave Staff List

LEADERSHIP

Alecia Kintner,
 President & CEO

Teri Hought,
 Chief Financial Officer

Lisa Wolter,
 Managing Director,
 Corporate Campaign

Kathy DeBrosse,
 Director, Marketing
 & Engagement

Kate Kennedy,
 Director, Philanthropy &
 Business Analytics

Erika Fiola,
 Impact Advancement
 Officer

Kara Shibiya,
 Program Officer

Samantha Cribbet,
 Director, Accounting

Dennis Lyons,
 Senior Director,
 Information Technology

STAFF

Laura Bookland
 Michelle Cimis
 Tiffany Hudson
 Amber Latta
 Janice Liebenberg
 Spencer Mapes
 Randy Martinez

Amanda McDonald
 Tara McMullen
 Zach Moning
 Jodi Perry
 Sue Reichelderfer
 Joel M. Staples
 Ryan Strand
 Sylvia Thornton

Thank you to the following companies, employees and foundations.

*Black Nativity at Cincinnati Black Theatre Company
Photo Credit: Mikki Shaffner*

2017 RECOGNITION LIST

Partner Companies and Foundations

Bold indicates 50% or greater employee participation

PARTNERS
\$2,000,000+
P&G

\$1,000,000 - \$1,999,999
Fifth Third Bank and the Fifth Third Foundation
General Electric Company

\$250,000 - \$499,999
Cincinnati Bell
Macy's, Inc.
The Kroger Co.
Western & Southern Financial Group

\$100,000 - \$249,999
Cincinnati Children's Hospital Medical Center
The Cincinnati Insurance Companies

Convergys Corporation
Duke Energy
Great American Insurance Group
Jacob G. Schmidlapp Trusts, Fifth Third Bank, Trustee
Ohio National Financial Services
PNC
Toyota Motor Engineering & Manufacturing North America, Inc.
U.S. Bank

COMMUNITY CHAMPIONS
\$50,000 - \$99,999

AK Steel
American Modern Insurance Group
Ameritas
The Carol Ann and Ralph V. Haile, Jr./U.S. Bank Foundation
The Christ Hospital Health Network
Cintas Corporation
The Daniel and Susan Pfau Foundation
Deloitte

Dinsmore & Shohl LLP
Dorothy M.M. Kersten Trust, U.S. Bank Trustee
The E.W. Scripps Company and Scripps Howard Foundation
Enquirer Media
Ernst & Young LLP
Frost Brown Todd LLC
The Greater Cincinnati Foundation
The H.B., E.W. and F. R. Luther Charitable Foundation, Fifth Third Bank and Narley L. Haley, Co-Trustees
Harold C. Schott Foundation
Keating Muething & Klekamp PLL
The Louise Taft Semple Foundation
Messer Construction Co.
The Thomas J. Emery Memorial
TriHealth, Inc.
University of Cincinnati and UC Health
VANTIV

continued on next page

Partner Companies and Foundations, Continued

LEADING

SUPPORTERS

\$25,000 - \$49,000

3 E. Fourth Street

(Cincinnati USA Regional Chamber, **Port of Greater Cincinnati, REDI**, Source Cincinnati, Cincinnati Business Committee, Cincinnati Regional Business Committee, Over the Rhine Chamber, Chinese Chamber)

Accenture

Bartlett & Co.

Charlotte R. Schmidlapp Fund, Fifth Third Bank, Trustee

Cincinnati Arts Association

Cincinnati Symphony Orchestra and May Festival Musicians & Staff

Eleanora C. U. Alms Trust, Fifth Third Bank, Trustee

ETHICON

The Farmer Family Foundation

Frisch's® Big Boy®

Helen G., Henry F., and Louise Tuechter Dornette Foundation, Fifth Third Bank, Trustee

HORAN

Huntington

Kao USA Inc.

Mercy Health

North American Properties

PAYCOR, Inc.

Sibcy Cline Realtors

Signature Hardware

Taft Stettinius & Hollister LLP

Thompson Hine LLP

United Dairy Farmers

United Way of Greater Cincinnati

ARTS ADVOCATES

\$10,000 - \$24,999

AAA Club Alliance

ArtsWave Staff

Atkins & Pearce, Inc.

Barnes Dennig

BB&T

Belcan Corporation

CFM International

Chemed Corporation and Roto-Rooter

Cincinnati / Northern Kentucky International Airport

Cincinnati Art Museum Staff

Cincinnati Playhouse in the Park Staff

Cincinnati Public School Employees

City of Cincinnati Employees

Clopay Corporation

Corporex Companies, LLC

The David J. Joseph Company

Dewey's Pizza

First Financial Bank

FRCH Design Worldwide

GBBN Architects

Givaudan Flavors Corp.

Grant Thornton LLP

Graydon

JLL

Katz Teller

KnowledgeWorks Foundation

LPK

The Landen Family Foundation

The Manuel D. and Rhoda Mayerson Foundation

Michelman

Nielsen

Osborne Coinage Co.

Patheon Pharmaceuticals Inc.

PLK Communities

Sims-Lohman, Inc.

Spicefire

St. Elizabeth Healthcare

The TQL Foundation

Towne Properties

Toyota Motor Sales North American Parts Center - Kentucky

Turner Construction Company

VonLehman CPA & Advisory Firm

The William O. Purdy, Jr. Fund of The Greater Cincinnati Foundation

Xavier University Faculty & Staff

Xtek, Inc.

CULTURAL

CONNECTORS

\$5,000 - \$9,999

84.51°

1919 Investment Counsel

3CDC

AIM MRO Holdings Inc.

Al. Neyer

Bahl & Gaynor Investment Counsel

Baird

Baker Concrete Construction

BakerHostetler

Bardes Fund

Beacon Orthopaedics and Sports Medicine

BHDP Architecture

Champlin Architecture

Chavez Properties

Cincinnati Ballet Staff

Cincinnati Bengals

Cincinnati Opera Staff

Cincinnati State Technical and Community College Faculty & Staff

Cincinnati USA Convention and Visitors Bureau

The Crosset Family Fund of The Greater Cincinnati Foundation

Cushman & Wakefield

d.e. Foxx and Associates, Inc.

DeanHouston Inc.

Eco Engineering, Inc.

Empower MediaMarketing

Enerfab Inc.

Fund Evaluation Group LLC

Hamilton County Employees

Hilltop Basic Resources, Inc.

Huenefeld Memorial Fund B

Intelligrated

Jack Rouse Associates, Inc.

The Jeff Wylar Automotive Family

Johnson Investment Counsel, Inc.

LOTH Inc.

Mayfield Brain & Spine

Northern Kentucky University Faculty & Staff

Park National Bank SW Ohio & NKY

Pomeroy

Pure Romance

Q Labs, LLC

RCF Group

Richards Industries

RiverPoint Capital Management

SHP Leading Design

Smale Family Fund of the Greater Cincinnati Foundation

Squire Patton Boggs (US) LLP

TriVersity Construction Company

Vorys, Sater, Seymour and Pease LLP

William H. Albers Foundation

MEMBERS

\$1,500 - \$4,999

4myBenefits Inc.

A & P Technology

American Red Cross-Cincinnati Area Chapter Staff

Americana Arts Foundation

Arthur J. Gallagher & Company

Bang Zoom Design Ltd.

Beech Acres Parenting Center

Belflex Staffing Network

BKD CPAs & Advisors

Blank Rome

Bob Sumerel Tire Co. Inc.

Boca Restaurant Group

Brian & Jill Rowe Foundation

Cassady Schiller CPAs & Advisors

CDK Global

Central Bank of Northern KY

CET

Chard Snyder

The Children's Home of Cincinnati

Cincinnati Business Courier

Cincinnati Metro Area Combined Federal Campaign

Cincinnati Museum Center

Cincinnati Public Radio

Cincinnati Reds

Cincinnati Shakespeare Company Staff

Cincinnati USA Regional Tourism Network

Cincinnati Works

Cintrifuse and StartupCincy

CLH Foundation

Comey & Shepherd Realtors

ConstructConnect

Contemporary Arts Center Staff

Covington Independent Public Schools

CTS Construction, Inc.

Curiosity Advertising

DeBra-Kuempel

The Dental Care Plus Group

Deskey

Donovan Energy

Downtown Cincinnati Inc.

Drees Homes

The Ellison Group, Inc.

Everything But The House

Federal Home Loan Bank of Cincinnati

Freestore Foodbank

Fusite Division of Emerson Electric Co.

Game Day

Communications

Garretson Resolution Group

Gilligan Oil

goDutch

Harvey C. Hubbell Trust

HAUSER

Heapy Engineering

Homan Foundation

I.A.T.S.E. Cincinnati Stage Employees Local #5

Indian Hill Exempted Village School District

Interact for Health

Jean-Robert's Table

Jeff Ruby Culinary Entertainment

Joseph Auto Group

Kohnen & Patton
KPMG LLP
Kroger Cincinnati/Dayton
Marketing Division
Landor
Landrum & Brown Inc.
**Legacy Financial
Advisors, Inc.**
Lerner, Sampson &
Rothfuss
Listermann Brewing
Company
LSI Industries Inc.
M. Bohlke Veneer
Corporation
**Madison Wealth
Management**
Maestro Development
MCM CPAs & Advisors
Megen Construction
Company
Mellott & Mellott, PLL
Meridian Bioscience Inc.
Milford Exempted Village
Schools
Mount St. Joseph University
Faculty & Staff
MSA Architects
The Myers Y. Cooper
Company
Northern Kentucky
Chamber of Commerce
Northlich
OneTouchPoint
O'Rourke Wrecking
Company
PatientPoint
Phillips Edison & Company
PMC SMART Solutions
Porter Wright Morris &
Arthur LLP
PricewaterhouseCoopers
LLP
Prologis
ProSource
Public Library of Cincinnati
and Hamilton County Staff
Rhinegeist Brewery
Rippe & Kingston
RoundTower Technologies
The Shepherd Chemical
Company
The Shepherd Color
Company
The Summit Country
Day School

Taft Museum of Art Staff
Taste of Belgium
Terracon Consultants, Inc.
Thomas More College
Faculty & Staff
THP Limited Inc.
Ulmer & Berne LLP
Union Institute & University
Faculty & Staff
Uptown Rental Properties
Vora Ventures
W. P. Dolle, LLC.
WCPO 9 On Your Side
Williams Foundation
Wood & Lamping LLP
Wood Herron & Evans LLP
YWCA Greater Cincinnati

FRIENDS **\$500 - \$1,499**

4 Entertainment Group,
LLC
Albert Cord Foundation
Alzheimer's Association,
Greater Cincinnati
Chapter
Archdiocese of Cincinnati
Archielectric
Company
**Art Academy of
Cincinnati Faculty
and Staff**
ArtWorks Staff
Basco Manufacturing Co.
**Beckman Weil
Shepardson LLC**
**Behringer-Crawford
Museum Board & Staff**
Boy Scouts of America,
Dan Beard Council
**Bressler & Company,
PSC**
Buddy Roger's Music
Burke, Inc.
C-Forward
CBRE
CHC Fabricating
Corporation
The Carnegie
Charles H. Bilz Insurance
Agency
Charles Scott Riley III
Foundation
CHUBB
**The Children's Theatre
of Cincinnati Staff**

Staff of Cincinnati
Association for the Blind
& Visually Impaired
Cincinnati Bar Association
**Cincinnati Children's
Choir**
**Cincinnati Development
Fund Staff**
Cincinnati Landmark
Productions Board & Staff
Cincinnati Zoo & Botanical
Garden
**Clifton Cultural Arts
Center Board and Staff**
CORE Resources, Inc.
Cors & Bassett, LLC
Crescent Paper Tube Co.
EMI Research Solutions
Ensemble Theatre
Cincinnati Staff
Equipment Depot
Flynn & Company, Inc.
GBQ Partners LLC
Girl Scouts of Western
Ohio
Gold Medal Products
Company
Gold Star Chili Inc.
Griffin Fletcher &
Herndon LLP
Health Collaborative
Helen T. Andrews
Foundation
HGC Construction
Hispanic Chamber
Cincinnati USA Inc.
itelligence
John Senhauser Architects
Jostin Construction
Kaldi's Cafe
**Kennedy Heights
Arts Center**
Kentucky Symphony
Orchestra Board and Staff
Kenwood Complete
Dentistry
Legal Aid Society of
Greater Cincinnati
MadTree Brewing Co.
Mailender, Inc.
The Cincinnati office of
Marsh & McLennan
Companies, Inc.
Milacron Inc.
Nada
Nelson Stark Company
Netherland Rubber Co.



PUTTING CINCINNATI ON THE MAP

On June 17, 2016, Cincinnati Opera presented the world premiere of the opera *Fellow Travelers*. Glowing reviews from the *New York Times*, *Wall Street Journal* and more were amplified around the world by *Daily Mail* in the UK, *La Presse*, and the *China Post*. 28% of *Fellow Travelers* ticket sales came from outside the Greater Cincinnati region. The numerous national articles and powerful critical reviews around the world helped to put Cincinnati on the map for its artistic vision.

Neyer Properties, Inc.
Northwestern Mutual
Osborn Williams &
Donohoe, LLC
Oxford Community Arts
Center Board and Staff
Pro Mach, Inc.
Pro Seniors, Inc.
Promark
Reliable Castings Corp.
Righteous Room LLC
Robbins Kelly Patterson
& Tucker
The Roselle Foundation
Scallan Family Foundation
The Seven Hills School
Skyline Chili, INC.
Sotto
St. Xavier High School
Starboard Strategy
State Farm Insurance
Straight Face
Partners, LLC
Sycamore Community
Schools Employees
TDA Associates, Inc.
Traditions Building &
Development Group, Inc.
Vehr Communications
Walt's Hitching Post
Waltz Business Systems
Washing Systems LLC
Wells Fargo Insurance
Services USA, Inc.
West Sixth Brewing
**Wyoming Fine Arts
Center**
Zalla Companies

*Three organizations wish to
remain anonymous*

ArtsPass Partners

ArtsPass is a perk program for ArtsWave donors at the \$75 level or above. Members can claim buy one, get one free deals and deep discounts to more than 100 participating arts and culture organizations, restaurants, shops and more.

20 Brix
 AIGA Cincinnati
 Alba Organic Beauty Studio
 American Sign Museum
 Art Academy of Cincinnati
 Artichoke
 ArtWorks
 Baldwin Music Education Center
 Baoku's Village
 The Barn and Woman's Art Club of Cincinnati
 Behringer-Crawford Museum
 Beyond the Curb Urban Living Tours
 Broadway in Cincinnati
 Brush Factory
 The Carnegie
 Chamber Music Cincinnati
 Cheers to Art
 The Children's Theatre of Cincinnati
 Cincinnati Art Museum
 Cincinnati Arts Association
 Cincinnati Ballet

Cincinnati Black Theatre Company
 Cincinnati Chamber Orchestra
 Cincinnati Chamber Opera
 Cincinnati Contemporary Jazz Orchestra
 Cincinnati Film Society @ The Mockbee
 Cincinnati Landmark Productions
 Cincinnati Museum Center
 Cincinnati Opera
 Cincinnati Playhouse in the Park
 Cincinnati Public Radio
 Cincinnati Reds
 Cincinnati Shakespeare Company
 Cincinnati Symphony Orchestra
 Cincinnati World Cinema
 Cincinnati Zoo & Botanical Garden
 Cincy Acro
 Cincy Brew Bus
 Clifton Cultural Arts Center
 Clifton Performance Theatre/Clifton Players

College-Conservatory of Music, University of Cincinnati
 Collegium Cincinnati
 Contemporary Arts Center
 Contemporary Dance Theatre
 Core Movement Studio
 Craft Connection
 DANCEFIX
 DE LA Dance Company
 Ensemble Theatre Cincinnati
 Exhale Dance Tribe
 Fabulous Frames & Art
 Fairfield Summer Theatre
 Falcon Theatre
 FC Cincinnati
 Fitton Center for Creative Arts
 Flourish by Design
 Frameshop
 Gia & the Blooms
 Greater Hamilton Civic Theatre
 Green BEAN Delivery
 Handzy Shop + Studio
 The Hive

Hofbrauhaus Newport
 Holtman's Donuts
 Indigenous
 Indigo Hippo
 Keep Your Shirt on Covington
 Kennedy Heights Arts Center
 Know Theatre of Cincinnati
 Lalo
 Linton Chamber Music
 Macaron Bar
 Madcap Productions Puppet Theatre
 MamLuft&Co. Dance
 Manifest Drawing Center
 Manifest Gallery
 Matinee Musicale
 May Festival
 The Mercantile Library
 MUSE, Cincinnati Women's Choir
 My Nose Turns Red Theatre Company
 National Underground Railroad Freedom Center
 Neuf
 Neusole Glassworks
 New Riff Distilling
 Newport Aquarium
 Off the Vine (OTV)
 OTRimprov

Oxford Community Arts Center
 Padrino
 Pho Lang Thang
 Pique
 Pyramid Hill Sculpture Park and Museum
 Quan Hapa
 Queen City Opera
 Rooted Juicery & Kitchen
 Salon 21
 Shake It Records
 Skeleton Root
 Studio Art and Stone
 Suder's Art Store
 Sunset Players, Inc.
 Tablespoon Cooking Co.
 Taft Museum of Art
 Taste of Belgium
 Urban Artifact
 US Martial Arts Academy
 Visionaries + Voices
 V's Café on 7th
 Wave Pool
 WCPO
 Women Writing for (a) Change
 Wyoming Fine Arts Center
 Your Friends & Neighbors
 Young Professionals' Choral Collective (YPCC)



The Duke Energy Power Chords at CincySings
 Photo Credit: Mikki Shaffner

2017 CincySings Competitors

BB&T
BB&Glee
 Cincinnati Children's Hospital Medical Center
Just Roll With It
 Duke Energy
The Power Chords
 Kroger
Kroger Kromatics

Macy's
Macy's in Harmony
 P&G
P&Gtles
BFF's
 Sibcy Cline Realtors
Sibcy Cabana
 The Christ Hospital Health Network
98.6 Degrees

The Cincinnati Insurance Companies
Insuring Harmony
 University of Cincinnati
HarmoniCats
 Western & Southern Financial Group
A Cappella with a Fella



Young Professionals' Choral Collective at their Chromatic Vision concert



Cinderella at Ensemble Theatre Cincinnati
Photo Credit: Mikki Shaffner

2017 LEADERSHIP DONORS

2017 ArtsWave Leadership Donors

VISIONARIES

\$25,000+

Anonymous (2)
Chris and Karen Bowman
Matt Butler and Rebekah Gensler
Castellini Foundation
Mr. Carl H. Lindner III
Mr. S. Craig Lindner
Mr. Jon R. Moeller and Ms. Lisa Sauer
Katherine and Richard Rosenthal
Thomas R. Schiff*
Tim and Teresa Tanner
Mr. and Mrs. Thomas L. Williams

OVATION CIRCLE

\$15,000 - \$24,999

Joe and Susan Pichler*
Moe and Jack Rouse
Mrs. Joseph S. Stern, Jr.
Dudley S. Taft
Mr. and Mrs. James M. Zimmerman

INNOVATORS CIRCLE

\$10,000 - \$14,999

Anonymous
Cecile D. Allyn
Colleen and Dean Athans
Ms. Andrea J. Ayers
Eileen and John Barrett
Rosemary and Frank Bloom*
Mr. and Mrs. Kerry R. Byrne
Susan and Burton Closson
Mr. Bob Coughlin*
Susan Friedlander

Naomi Tucker Gerwin
Bruce and Melanie Healey
David and Karen Hoguet
Roger and Joyce Howe
Milly and Gary Huffman
David and Pamela Joyce
Beth and Peter Levin
LKC Foundation
Lynne and Michael McAlevey
Ken and Mandy Oaks
Oliver Family Foundation
Rosemary and Mark Schlachter
Thomas and Lorri Simpson
Tom and Dee Stegman
Carol G. Talbot
Anne Drackett Thomas
Andre and Maureen Valentine
George H. and Kim M. Vincent
Alice Weston
Judy and Joe Williams

CHAIR'S CIRCLE

\$5,000 - \$9,999

Anonymous (3)
Mr. Tyonn Y. Betts
Rich and Lisa Boehne
Neil Bortz
Jack and Joanne Brown
Trish and Rick Bryan
Barry Bucher

Mr. J.B. Buse
Mr. and Mrs. Greg Carmichael
Shannon and Lee Carter
Ray and Marylyn Clark
Kerry and Norah Clark*
Sheila and Christopher Cole*
Mr. and Mrs. William O. DeWitt, Jr.

Marjorie Drackett
Mr. and Mrs. Peter J. Effler
Tim and Sheila Elsbrock
Lisa and Richard Ernst
Scott and Mary Farmer
Mr. and Mrs. Stephen J. Fish
Suzette and Michael Fisher

Mrs. Philip O. Geier
Paul and Teri Gelter
Mrs. Victoria Buyniski Gluckman
John B. Goering
Delores Hargrove-Young
Louise and Joe Head*
Mr. Mark Heimbouch
Mrs. Anne P. Heldman*

Michelle and Don Hershey
Lori and Rolf Hetico
Ms. Katy Hollister and Mr. Brad Miller
Ms. Heidi B. Jark and Mr. Steven T. Kenat
Mr. Andrew R. Kaiser
Mr. Robert J. Kohlhepp*

continued on next page

Leadership Donors, Continued

Mr. and Mrs. Robert L. Lawrence*
 Terry and Elizabeth Lilly
 Chris Lorence
 Karen F. Maier and Delane Starliper*
 Deborah P. and John M. Majoras
 Mike and Ann Michael
 James A. Miller
 Mr. Shawn T. Newman
 Roger and Barb Newport
 Mrs. Jacqueline G. Parker
 John and Francie Pepper*
 Wym and Jan Portman
 Dan and Julia Poston
 Jeffrey and Terry Potts
 Mr. and Mrs. Marc S. Pritchard
 Marty and Nick Ragland
 Martin and Maribeth Rahe
 Ellen Rieveschl
 Elaine and Marvin Rosenberg
 Luann and JF Scherer
 Digi and Mike Schueler
 Larry and Rhonda Sheakley Family Foundation
 Kelly Soller
 Christin and Tom Spurr
 Jack and Joyce Steinman
 Sarah and Steiny Steinman
 Jim and Kathleen Stengel
 Peter and Sandy Stern*
 Rebecca and Garry Terrell
 Mr. and Mrs. Theodore H. Torbeck
 Daman and Barbara Turner
 Laura and Tayfun Tuzun
 Ellen and Ray van der Horst
 Margaret and Albert Vontz III*
 Randolph L. and Sallie R. Wadsworth
 Mr. Dennis W. Watson
 Mary and James Zimmerman

DIRECTORS' CIRCLE

\$2,500 - \$4,999

Anonymous (10)
 Ms. Maribeth Amyot
 Mr. and Mrs. James M. Anderson
 Gerard and Susan Bailley
 Ms. Ellen H. Baker
 Ron Bates
 Ms. Pamela A. Battle
 Gale and Dave Beckett
 Lois G. Benjamin
 Drs. David and Elaine Billmire
 Mr. Steven Bishop
 Laura Blackorby
 Ms. Shannon Bobbert
 Tom and Kali Boecher
 Lorraine and Brien Bolsinger
 Bob Bonder
 Chad Borton
 Glenn and Donna Boutilier
 John M. Bowman
 Robyn and Mark Brands
 Robert Briggs
 Helena Lawson Brooks
 Laura and Paul Brunner
 The Otto M. Budig Family Foundation
 Chris and Vivienne Carlson
 Scott and Wendy Carpenter
 Martha and Kevin Carroll
 Mr. Robert A. Carson
 Bridgit Chayt
 Michael L. Cioffi
 Mr. and Mrs. Michael D. Connelly
 Mr. and Mrs. Michael A. Coombe
 Ms. Karen L. Crone
 John L. and Lisa Cronin
 Mr. John L. Crow and Heather Schmidt
 Brendon and Becky Cull
 Ms. Althea M. Davis
 Mr. Angelo de Jesus
 Mr. Sidney C. Deloatch
 Mr. Dennis W. Dern
 Mr. and Mrs. Ronald J. Dolan

David F. Dougherty
 Ms. Kelley Downing
 Mr. Philip Duncan
 Clever Crazes for Kids, Dianne Dunkelmann
 Dr. Lisa Dunlap
 Mr. Mohammad Ehteshami
 George and Jeane Elliott
 Mr. and Mrs. David W. Ellis III*
 Dr. Teresa F. Ernst
 Brad and Trish Fielden
 Ms. Renee S. Filiatraut
 Tom and Debbie Finn
 Lisa D. Flacke
 J. Michael and Kimberly Flynn
 Tim and Sarah Fogarty
 Frank and Rosalie Forrest
 Mr. and Mrs. Leigh R. Fox
 Matt Garretson
 Mr. Michael Gatio
 Kay Geiger
 Paul Gervason
 Mr. Kala Gibson
 David and Pamela Ginsburg
 Diana and Robert Goetz
 Carrie and Ken Goldhoff and family
 Lynne Meyers Gordon M.F.A.
 Ms. Michelle Goret
 Dr. and Mrs. James M. Greenberg
 Chet Guess
 Joseph W. Hagin, Sr.
 Mrs. Agnes Godwin Hall and Mr. Darin C. Hall
 Ms. Kristal E. Hambrick
 Dr. Richard and Marcie Hammel
 Tom and Jan Hardy
 Ms. Patricia Hartsfield-Davis
 Teri and Mike Haught
 Michael W and Diane Hawkins
 John and Carrie Hayden
 Kim and Gary Heiman Family Foundation
 Mr. James P. Henning
 Ms. Vicki Herche
 Mr. David C. Herriman*
 Barbara and Guy M. Hill

Jeff and Erika Hinebaugh
 Mr. and Mrs. Joseph W. Hirschhorn*
 Ben Hoffman
 Ms. Sandra Holzgen
 Mr. and Mrs. Richard P. Homan
 Lynne and David Hoover
 Mr. and Mrs. Terence L. Horan
 Dave and Debbie Horn
 Gregory T. Hyland II and Andrew Steinbrecher
 Jeff Horton and Lydia Jacobs-Horton
 Joseph Hoskins
 Marianne and Don James
 Ms. Denise M. Jeavons
 James and Susan Joa
 Jerry Kathman and Liz Kathman Grubow
 Chris Bergen and Candace Kendle
 Mr. and Mrs. Michael Kennedy
 Diane and Patrick Kevin
 Tom and Judy Kinman
 Alecia and Michael Kintner
 Mr. Gregory Kosch
 Dorothea Langsam
 Jeff Lee
 Ms. Terry Lindquist
 Whitney and Phillip Long
 Mr. Joseph Lubrecht
 Amanda Lucas
 Carmie Maloney
 Mr. and Mrs. Michael S. McGraw
 Larry and Jill McGruder
 Phil and Suzanne McHugh
 W. Rodney and Kathryn K. McMullen
 Ms. Susan McPartlin
 Mary Ann Meanwell
 David and Michelle Meyer
 Jill P. Meyer and Awadagin Pratt
 Mr. and Mrs. Douglas T. Miller*
 Mr. and Mrs. William Millhaem
 William L. Montague and Kelly L. Wittich*
 Mr. Paul Moore
 Mrs. Eleanor D. Nelson

Mrs. Valerie L. Newell
 Mr. and Mrs. Suresh Nirody
 Ms. Maureen Normoyle
 Michael O'Rourke
 Cathy and Jim Orr
 Jack and Marilyn Osborn*
 Ken Oswald and Mary Beth Martin
 Dr. Donald Page
 Eric and Diana Paternoster
 Mark and Kim Pearson
 Carlos Perez
 Mr. Daniel Pfahl
 Robert Pitcairn
 Jarrod and Erica Pontius
 David and Jenny Powell
 Stephen Power
 Jason and Emily Praeter
 Mr. and Mrs. R. Michael Prescott
 Mrs. Elizabeth M. Radke
 Robert and Gretchen Reifsnnyder
 Mr. and Mrs. Richard D. Reis
 Vicky and Rick Reynolds
 Mr. J. Scott Robertson
 Mr. William S. Robertson
 Mr. and Mrs. Wm. T. (Bill) Robinson III
 Rachael Rodman
 Cathie and Rick Rothfuss
 Karl and Robin Rothfuss
 David Rowe
 Ann and Harry Santen*
 Mr. Carl Satterwhite
 Ms. Pamela J. Schofield
 Greg and Debbie Schroeck
 Julie and Bill Schuler
 Mr. Kenneth Seitzer
 Mark and Jane Serrianne
 Bob and Kirsten Shaffer
 Mrs. Deborah Smith
 Jim and Mary Carol Sowar
 Ms. Elizabeth Stautberg
 Katherine and Tim Stautberg*
 Ken and Carol Stecher
 Richard Stein
 Melissa Stevens
 Elizabeth A. Stone*
 Mr. and Mrs. Richard Stradling, Jr.

Nancy Swanson and Jeff Groenke*
 Thomas Tami, MD
 Ms. Cenona A. Taveras and Dr. Eric Beatty
 David and Marsha Taylor
 Sherman L. Taylor II
 Jan and Tim Timmel
 Karen Bruner Upright
 Dr. Alexander A. Vinks
 Mr. and Mrs. J. Philip Vollmer
 Mr. Jonathan Vreeland and Ms Vanessa Indriolo Vreeland
 V. M. Walker
 The Warrington Foundation
 Karen and Marc Weinberg
 Susan E. Weldishofer
 Gina R. Whittle
 Philip Wickler and Michele Pfeiffer
 Mr. Brian R. Wildman
 George and Kathy Wilkinson
 Mr. Joseph J. Willke
 Ms. Jodi Woffington and Mr. Jay Woffington
 Lisa and Adam Wolter
 Mr. and Mrs. Gordon C. Wright
 Mr. Shane M. Wright
 Tony Yocco

LEADERSHIP CIRCLE

\$1,500 - \$2,499

Anonymous (23)
 Mr. Fred Abblett
 Anurag Agarwal
 James Allard
 Josef Allen
 Mrs. Linda Alley
 Jacqueline Allshouse-Hutchens
 Mr. Joseph C. Alter
 Diane L. Altmix
 Lars Anderson
 Elizabeth Andrews-Bock
 Seth A. Ankrom
 Linda Antus
 Marjorie Applegate
 William and Eve Appleton

Kaitlyn Armstead
 Marc W. Arnold
 Mr. Steve Arnold
 Dr. Kelyn A. Arora
 Kathaleen and Stewart Atkinson
 Lynn and Eric Baehre
 Kathleen Baier
 Cathy Bernardino Bailey
 Juan Bailey
 Joseph S. Baker
 Mr. Larry V. Baker
 Lori Baker
 Mohamed Banoun
 Karen S. Barfield
 Amy Barhorst
 Mr. Lee E. Barrett
 William and Mary Baskett
 Beverly Ann Bates
 Deana Battle
 Kelly Beatty
 Jim Beck
 William and Doreen Beckham
 Mrs. Cindi Bedinghaus
 Ronald and Jenifer Beerman
 Patty and Jim Beggs
 Cora Beimesche
 Mr. and Mrs. Mark E. Beischel
 Mr. and Mrs. Christopher J. Bell
 Pamela and Jeffrey Bernstein
 Teresa Beschman
 Mr. Jan W. Beseler
 Mr. Michael Betz
 Mr. and Mrs. Robert T. Betz
 Mr. and Mrs. Mark Biegger
 Mrs. Karen E. Bishea
 Scott and Stephanie Bisselberg
 Ms. Amy Bixel
 Gary and Marci Blachman
 Mrs. Herbert Bloch, Jr.*
 Randal and Peter Bloch
 Roslyn Bolden
 Mr. and Mrs. Doug Bolton
 Sharon Bond
 Laurence and Hildy Bonhaus
 Cassandra W. Borchers

Dr. John E. Bossert
 Ms. Roberta A. Boyd
 Mr. and Mrs. Brian C. Brickner
 Nina and Frederick Britton
 Mrs. Khloe Broelmann
 Mr. and Mrs. Herbert R. Brown
 Kyle Brown
 Stanley L. Brown and Deborah S. Thomen
 Kelly and Timothy Brown
 A. Christine Browning
 Stacey Browning
 Mr. and Mrs. Michael J. and Mary E. Bruggeman
 Mr. and Mrs. Craig Buchholz
 Mrs. Eileen M. Budo
 Robert Buechner Foundation
 Mr. John and Tiffany Bultema III
 Mrs. Ann J. Bunis*
 Mr. James E. Burke
 Christopher Bush
 Michael Butera
 Mr. Benjamin "Rocky" Byington
 Marion Byndon
 Stephanie Wright Byrd
 Mr. Philip C. Byrde
 Julie Calvert
 Mr. Donald Calvin
 Gerald Cantey
 Christopher Carmichael
 Sarah Beth Carpenter
 Pat Carruthers
 Caslavka Family
 Steven Casson
 Mr. Chaker A. Chahrour
 Karen Chamberlain
 Duane Charbonneau
 Ms. Holly L. Cheers
 Ms. Kim Chiodi
 Ms. Crystal Chittenden
 Joon Cho
 Keris Clark
 Linda Clement-Holmes
 William L. Clifford
 Paula Clifton
 Mary Ellen and Tom Cody
 Lela and Maurice Coffey
 Terrance Cole



impact STORIES

DEEPENING ROOTS IN THE REGION

As Union Terminal entered its restoration period, Cincinnati Museum Center launched the CurioCity series with support from the ArtsWave YP Grant Program. Approximately 625 young professionals attended monthly events that combined CMC's expertise with access to unique cultural venues. Attendees met curators and experts while networking with peers, increasing engagement with Greater Cincinnati and deepening roots in the region. The program grew throughout the year, leading CMC to expand it from eight to eleven events per year.

John Coleman
 Mrs. Verna E. Coleman-Hagler
 Eric and Jane Combs
 Michael L. Connley
 David W. Cook
 Jeffery Cook
 Mr. H. Douglas Cooke III
 Hideo and Sherri Core
 John Cothran
 Teresa Couch
 Brian Cox
 Christopher Coy
 Susan Cruz
 Matthew Curoe
 Bonnie Curtis
 Jennifer and Vito Damiano
 Steve D'Amico
 Tanya Daniel
 Courtney and Craig Dauer
 Ann Davis
 Mr. Bruno De Weer
 Kathy DeBrosse
 Dr. Rose Marie Deibel
 David Deitsch
 Nicholas Denton
 Mike and Cathy DeWeirdt
 Mr. and Mrs. Andrew and Amy DeWitt
 Dr. Thomas G. Dewitt

Ms. Maria Diaz De Prego
 Ed and Karen Diller
 Dr. Gaylene R. Dinkel
 Ms. Kimberly Doebereiner
 Mr. John Dovich
 Dan J. Downing
 Mr. Don Doyle, Jr.
 Mrs. Aida Dragovic
 Kaitlyn Driesen
 Thad Driscoll
 Charles and Wendy Drucker
 Mr. Eric Ducharme
 Martine Dunn
 Anne Eberhart
 Robert and Rachel Eckman
 Matthew Edelbrock
 Monica R. Egger
 Mr. Brian A. Eichhold
 Mr. and Mrs. Robert Elberfeld
 Paul Eldridge
 Ms. Paige Ellerman
 Mr. Christopher C. Elma
 Jean M. Elwing, MD
 Susan B. Esler and Steve Skibo
 Anthony G. Esposito
 Ms. Kathryn Evans
 Mark J. and Melissa Fahner

continued on next page



Pones performing *Place/Setting* for Cincinnati Fringe Festival

Leadership Donors, Continued

- | | | | | |
|--|--|---|---------------------------------|------------------------------|
| Dr. and Mrs. Michael K. Farrell | Donald L. Gilbert MD and Deborah Gilbert PhD | Michele and Joseph Halpin | Christine and Richard Holmes | Cheryl Jorgenson |
| Richard and Carol FencI* | David M. Giles | Robin Hamilton | Julie Holt | Mr. Gary C. Joseph |
| Kimber L. Fender | Lisa C. Goines | Scott and Carolyn Hamlin | Patricia Hord | Jay and Shirley Joyce |
| Elizabeth Fikes | Arielle M. Goldberg and William D. Meredith | Alicia Hammersmith | Christopher and Jennifer Houser | Elizabeth Jukic |
| Tom and Mary Liz Finn | Mrs. Elizabeth D. Goldsmith | James A. Hampton | Katherine A. Howard | Adam and Chris Kahn |
| Matthew Fischer | Ms. Jeanne Gollither | Lauren Hannan Shafer | Keith Howorka | Brian and Alisha Kalb |
| Sharon Fiscus | Mr. Clifford Goosmann and Ms. Andrea Wilson | Kurt and Dori Hansen | Dr. Cheryl L. Hoying | Anneke Kaminski |
| Robert W. Fisher | Mady Gordon | Mr. and Mrs. Frank Hanson | Megan C. Hudson | Debra Kaput |
| Barbara Fitch (Mrs. Stona) | Dr. Camille Graham | Sasha and Grant Harbrecht | Herbie Huesman | Ellen M. Katz |
| Bill and Audrey Fitzgerald | Richard M. and Colleen A. Grant | Jim L. Harkin | Myron and Sherry Hughes | Mike and Jane Keating* |
| James T. & Leslie Fitzgerald | Melvin and Chandra Gravely | Linda Harlow | Laura L. Humphrey | Patti and Tom Keckeis |
| Ryan and Suzanne Flanigan | Regina Gray | Mr. Shawn Harter | Alissa Huschart | Mr. R. Ted Keller |
| Alan S. Flege | Nancy and Trey Grayson | Debra Hartsell and Michael James | Luana Iorio | John and Debra Kellington |
| Jason and Shellie Foley | Abigail Grebe | Barbara Hauser | Maite Iraolagoitia | Helen and Darius Kemp |
| James Fortner | Ms. Vicki C. Green | Mr. Andrew T. Hawking | Mr. and Mrs. Kevin E. Irwin | Angela Noelle Kenney |
| Mr. and Mrs. Tadd A. Fowler | Mrs. Linda Greenberg* | Ms. Deborah M. Hayes | Danielle Ivory | Michael Kerksmar |
| Mary Francis | Elaine and Richard Greiwe | Andy Head | Jason Jackman | Caroline Key |
| Mr. and Mrs. Toriano and Maya Franklin | Daniel Griesemer | Mr. Robert R. Heidenreich | Charles and Eve Jackson | Sanyika Keyes |
| Jenny Franta | Paul Griscom | Mrs. Cheryl L. Heilman | Dave and Cindy Jackson | Amit and Sabina Khemchandani |
| Patrick Frew | Mr. and Dr. Grisemer | Mr. and Mrs. Fred Heldman* | Monica Jackson | Tim and Pam Kimmel |
| Ms. Patricia A. Frey | Gary and Dina Gruber | Paul Hemmings | Nalini Jagannath | Marcene C. Kinney |
| Ms. Jill Frondorf | Mr. and Mrs. Michael Gruber | Mr. Martin Hettich and Ms. Nina Urban-Hettich | Mr. Robert Janning | Brian and Jackie Kirkpatrick |
| Lois and Gary Fruhwirth | Laura Guggenheim | Mr. Joseph D. Heyd | Jim and Margie Jansing | Tom and Sue Kirkpatrick |
| Robert Ganz | Mr. David Gunn | James Hicks | Matt Jessup | Gwen Kirles |
| Dusty Garner-Carpenter | Mr. and Mrs. Louis Guttman | Tillie Hidalgo Lima | Raymond A. Jeter | Mr. and Mrs. Cameron Kitchin |
| Jane Garvey and John Lanier | Stuart N. Hagglund | Mr. Michael A. Hirschfeld | David Johns | Ms. Lisa Knutson |
| Christine Geary | JoAnn and Gary Hagopian | Teresa Hoelle and Scott Provancher | Ms. Margaret Johnson | Ms. Claudia S. Kohlman |
| Ms. Jodi Geiser | Mrs. Kathy A. Haines | Mr. John Hoeting | Mr. Paul Johnson | Kelly Kolar-Eyman |
| Thom and Lu Gerdes | Mrs. Kimberly Halbauer | Mr. Michael J. Hoffmeister | Shannon Johnson | Mr. Mark L. Koors |
| Mr. Jim Gielty | | J. Mark Holcomb | Stephen Johnson | Daniel Koppenhafer |
| Trina Gierden | | David Holcombe | Julie D. Jones | Mrs. Dale Kozma |
| | | | Mr. and Mrs. Kevin Jones | Mr. Jack Kraeutler |
| | | | Mr. Titus A. Jones | Dr. Colleen Kraft |
| | | | Ms. Della R. Jordan | |

Theodore H. Kramer	Mr. and Mrs. Thomas J. Lueke	Mr. and Mrs. John McShane	Kevin J. and Laure Murray	Audrey Pettengill
Kim and Patrick Kraus	Mrs. Anne Lynch	Mr. Charles E. Mead, Jr.*	Averrin Mwalupindi	Liane and Dave Phillips
Mr. and Mrs. William S. Krausen	Ms. Cynthia A. Lyons	Angela Meehan	Janet B. Myles	Norman Phillips
Mrs. Krystyna Krawczyk	Dennis and Teresa Lyons	Ms. Susan M. Meeks	J Nash	Mr. and Mrs. T. Stephen Phillips
Karl Kreunen	Mr. Douglas F. Lyons	David Meiners	Mr. Thomas M. Nash	Mr. Gilliam D. Phipps
J.B. and Allison Kropp	John Maddrill	Lisa Mell	Christina and Pete Neises	Elizabeth Pierce
Ms. Jule Kucera	Mr. and Mrs. Charles Maness	Mrs. Isabel Mendez	Ms. Naomi Nelson	Mrs. Nancy Pinckney
Virginia Kuertz	Lynn and Patrick Mangan	Gary and Maria Mercer	Mr. Thomas Neltner	James Plum
Mr. and Mrs. Polk Laffoon IV	Mrs. Rhonda Manley	Jennifer Merchant	Tony and Tara Newbault	Andy and Lori Poole
Thomas Lamarre	Michele A. Mansfield	Ms. Kathryn E. Merchant	Stefanie A. Newman	Terrence Porter
Cynthia Joy Lamb	Thomas D. Mantei and Anne Chasser	Tom and Theresa Merrill	Bill and Karen Neyer*	Dr. Monica Posey
Peter Landgren and Judith Schonbach	Sherie Marek	Dan and Anne Michel	Mr. and Mrs. Shawn Niehaus	Mr. Richard L. Postler
Jamie Landheer	Ms. Peggy Ann Markstein	Kathleen W. and Steven W. Miller	Jonathan and Jennifer Niemeyer	Mr. Camryn J. Prevost
Louis Langrée	Susan Marmo	William T. Miller	Mr. Mikio Nishizu	Bill and Mary Beth Price*
Jennifer Larkins	Mr. and Mrs. Andrew J. Martin	Mrs. Catherine M. Millette	Mr. John L. Noelcke	Gina Prickel
Scott and Tami Lauschke	Mr. Chad C. Martin	Deborah A. Miner	Ernest Nordquist	Brian Queenan
Sarah Lawler	Henry Martin	Christopher Minnich	Pedro Noriega	Mr. Sundar Raman and Ms. Ramya Santhanam
Kei and Shannon Lawson	Teresa and Randy Martinez	Danute Miskinis	Molly North	Mary Ran Gallery
Wendy Lea	Paul Martini	Mr. David M. Moeller and Mr. Mark E. Dehler	Mr. Richard Oberschmidt and Mrs. Diana Oberschmidt	John and Kim Ravenhall
Mr. Paul R. Lechleiter	Ms. Lisa M. Mather	Ms. Peg Moertl	Elizabeth and Stefan Olson	Jackie Reau
Steve Leeper and Rae Vuic	Beena Mathew	Randy and Krista Monnin	Elizabeth and Walter Osborne	Ms. Johnna Reeder
Mr. and Mrs. Frank P. Leggio, Jr.	Mr. Anthony L. Mathis	Michael Moore	Ward and Debbie Ostendorf	Corinne Reich
Jason and Brandi Lenihan	Keri Matthews	Mr. Terence Moore	Jessica Overley	Mr. Kirk W. Reich
Andi Levenson Young	David W. Mauldin	Mr. Samuel Moore Jr.	Colleen Oxbrough	Patricia Pease Rice
Wendy Kurtz Levine	Nicholas and Jessica Mavridoglou	Dr. and Mrs. Kenneth and Mary Morand	Mildred and Vicente Pacheco	Dr. Jeanette Richards
Sue S. Lewis	Kathleen Mays	Emily Morgan	Tom and Marian Partridge	Camille A. Richardson
Carrie Lichter	Debbie S. Mazziotti	Victoria Morgan	Mr. David A. Pearce	Linda A. Richey
Janice Liebenberg and Andy Holzhauser	Holly and Louis Mazzocca	Gwen Morris	Judy Pepler	Kimberly Riddle
Mr. and Mrs. David Lindner	Mary Mc and Kevin Lawson	Carrie Marie Mount	John Perentesis	Mary Riffe
Calvin and Patricia Linnemann	Demetrice McClurkin	Paul and Terri Muething	Barbara Perez	Kendra Riley
David W. Linnenberg	Tim and Trish McDonald	Anne E. Mulder and Rebecca M. Gibbs	The Hon. and Mrs. Burton Perlman	TaraLyn Riordan
Bill and Diana Lower	Candace McGraw	Michele Mullins	Judy L. Pershern	Jeffrey Robbins
Daniel Luegering	Marybeth McManus	Steve and Beth Mullins	Lauren and Justin Peter	Nancy Catherine Roberto
	Shelly McNamara	Sandra Murawski		Ms. Cynthia S. Robertson
		Sarah and Christopher Murphy		Edward Robinson
				RUGiving2
				Blake Robison and Connan Morrissey
				Ms. Jean Lydon-Rodgers
				Jeffrey Rodgers
				Mrs. Kelly T. Roebuck
				Vicki Dapper Rogers
				Cheryl Rose and Jeff Chapman
				Scott Rose
				Dr. Jan Rosenbaum Sass
				Nancy and Edward Rosenthal
				Mr. Nick G. Rosian
				Christopher Ross
				Ms. Audrey L. Rossman
				Jenni and Derek Roubush



impact STORIES



BRIDGING CULTURAL DIVIDES

In the spring and summer of 2016, the Cincinnati Art Museum presented an exhibition that illustrated how the arts can bridge cultural divides: *30 Americans*. This conversation-starting and sometimes provocative exhibition focused on issues of race, gender and historical identity in contemporary culture. 92% of visitors noted that the exhibition introduced them to a perspective they hadn't considered, and 75% reported a better understanding of contemporary conversations about equality and race relations.

continued on next page

Leadership Donors, Continued

Joy Herald Rutan
 Jack and Martine Ryan
 Saurabh Saksena
 Marie Laure Salvado
 Mrs. Katrina Sammons
 Kathy and Mario San Marco
 Linda Sandidge
 Ann Sandman
 Ms. Martha Cutright Sarra
 Mrs. Aude Scheibli-Roumegoux
 Kris L. Scheihing
 Charles Scheper
 Robert and Dawn Schiff
 Benjamin Schlagheck
 Lukas A. Schmid
 Denise A. Schnieders
 Jerry W. and Ann G. Schoen
 Mr. and Mrs. Jeffrey Schomburger
 Roger J. and Glenda C. Schorr*
 Mr. Herb and Ms. Jenn Schul
 Dr. Ann E. Schulte
 Stephanie M. Schumacher
 Michael N. Schuster
 Ann Schwentker
 Ms. Ann M. Schwister and Dr. Juan C. Santamarina
 Mary Warner Scott
 Robin Seaborough
 Cristina Seda-Hoelle
 Emily Seitz Pawlak

Kathy Selker
 Ronald Seniors
 Daniel D. Sergent
 Steven and Linda Shahnaitis
 Dr. Elizabeth A. Shaughnessy and Mr. Jim Stapleton
 Matthew and Robin Sheakley
 Stephanie and Kris Shepherd
 Timothy Shepherd
 Mr. and Mrs. Brent and Valarie Sheppard
 Mrs. Belinda Sherman
 Julie and Steve Shifman
 Mr. and Mrs. John E. Shore
 Christopher and Laura Shroat
 Jerry and Betsy Shroat
 John Sieg
 Murray Sinclair
 Stephanie Sisak
 Lydia Sites
 Bonita Siverd
 Mr. Michael Slattery
 Ms. Sandra J. Slusarczyk
 Christi Smith
 Mr. Dwight T. Smith
 Mr. and Mrs. Edgar L. Smith, Jr.
 Mr. James C. Smith
 Jamie Smith
 Michael and Donnalyne Smith

Stephanie Smith
 Albert and Liza Smitherman
 Sofie Snauwaert
 Joy Snyder
 Mr. and Mrs. Nicholas J. Sower
 Alice Sowers
 Stephanie Spaccarelli
 Amy and Keith Spiller
 Sarah St. Clair
 Mary Stagaman
 Kevin Stanford
 Doug Stang
 Mr. Leroy Staples
 Terry Starcher
 Erin and Shane Starkey
 Matthew Q. Stautberg
 Mr. John F. Steele, Sr.
 Paula Steiner
 Don and Kristin Stock
 Thomas Stoll
 Michael and Amy Stonecipher
 Brian J. Stout
 Erin A. Straits
 Drs. Roger H. and Cynthia M. Sublett
 Mr. and Mrs. Kevin R. Sullivan
 Thanikachalam Sundarajan
 Tina Surface
 Jennifer Suttles
 Ryan Swisher
 Matthew Szolwinski

Michael Taney
 Karla Tankersley
 Mr. Robert C. and Anne C. Taylor
 Don and Linda Tecklenburg
 Lisa Tecklenburg
 Gretchen Terhar
 Jacqueline M. Terry
 Jennifer Terry
 Carol Teter
 Beverly Tharp
 Abbot and Josie Thayer
 Mr. Pieter D. Theron
 Amy Thompson
 Joyce and Howard Thompson
 James R. Tippmann
 Mr. Alessandro Tosolini
 Dr. Laura Trice
 Maria E. Troyano, Ph.D.
 Faith Tupman
 Monica Turner
 Robert and Carol Turner
 Jacqueline Tye
 Ron and Arleigh Tysoe
 Mark Ulliman
 Mr. Gregory M. Utter
 Ken and Liz Valentine
 Kelly and Guy Vanasse
 Toui Vang
 Jeremy and Louise Vaughan
 Bennette Veals and Paul E. Pierre
 Chandrasekar Venkataramani
 Mr. Robert F. Verbryke
 Mary Vigilante
 Larry and Maureen Vignola
 Ms. Pamela J. Viscione
 Vista Foundation
 Mr. Daniel Vogelpohl
 Mr. and Mrs. Stephen G. Vollmer
 Daniel and Emily von Allmen
 Stephen and Gail Von Wahde
 Cari Vonier
 Lee Walton and Allison Cox
 Mark and Noël Walton
 Buzz Ward

Anne Warrington
 Dennis and Yvonne Washington
 Conni Weaver
 Warren and Pam Weber
 Carolyn and Bob Wehling
 Ms. Jane Welling
 Mr. Timothy M. Wesolowski
 Barbara Weyand
 Susan E. Wheatley
 Mr. and Mrs. Gregory M. Wheeler
 Peter Whipple
 Ms. Chiquita V. White
 Juanita White
 Charles and April Whitlock
 Kristine Wickemeier
 David Willbrand
 Ms. Diana Willen
 Felicia Williams
 Michele Williams
 Mr. and Mrs. Stanford T. Williams, Jr.
 Brennen Willingham
 Sara Willingham
 Mr. and Mrs. Christopher Wilson
 Gregg H. Wilson
 Mr. and Mrs. Richard Wilson
 Ms. Carole Winchester
 David and Jennifer Withrow
 Nancy and David A. Wolf
 Ms. Rebecca S. Wood
 Dr. and Mrs. Frank C. Woodside, III
 Mr. Matt Woody
 Mr. Scott Workman
 Dr. Nestor Worobetz
 Ms. Michelle A. Wright
 Felicia Thornton Wymore
 Mr. Jeffrey C. Yancey
 The Zaring Family Foundation
 Ms. Susan B. Zaunbrecher
 Dave and Dee Ziegler
 Jaculin Zurlinden

*Through a fund at the Greater Cincinnati Foundation

impact STORIES



ENLIVENING NEIGHBORHOODS

Every other Friday, Price Hill Will offers free community Concerts in the Square featuring Price Hill musicians in St. Lawrence Square. The park was created to increase visitors to the heart of the Warsaw Avenue Neighborhood Business District. By hosting a concert series in this park, Price Hill Will creates the eye-catching landmark – and enlivened community – that Price Hill imagined when they were planning the Square.





2017 ArtsWave Women's Leadership Roundtable Symposium speakers with Alecia Kintner and WLR Chair Kelly Soller
Photo Credit: Mikki Shaffner

2017 WOMEN'S LEADERSHIP ROUNDTABLE MEMBERS

ArtsWave Women's Leadership Roundtable brings together women who support and value the impact, reach, and quality of the arts in our region to inspire and be inspired. Members support ArtsWave at the leadership level.

Anonymous (2)	Laura Blackorby	Bridgit Chayt	Anne Eberhart	Rebekah Gensler
Jacqueline Allshouse-Hutchens	Shannon Bobbert	Ms. Holly L. Cheers	Mary P. Effler	Naomi Tucker Gerwin
Diane L. Altmix	Kali Hacias Boecher	Kim Chiodi	Monica R. Egger	Trina Gierden
Maribeth Amyot	Roslyn Bolden	Crystal C. Chittenden	Julie Elberfeld	Deborah Gilbert Ph.D.
Elizabeth Andrews-Bock	Lorraine Bolsinger	Keris Clark	Paige Ellerman*	Pamela K. Ginsburg
Linda Antus	Sharon Bond	Linda W. Clement-Holmes	N. Jeane Elliott	Victoria Buyniski Gluckman
Cathy Bernardino Bailey	Hildy M. Bonhaus	Ms. Allison Cox	Sheila Elsbrock	Agnes Godwin Hall*
Ellen Baker	Karen Bowman	Susan Cruz	Jean M. Elwing, MD	Lisa C. Goines
Lori Baker	Robyn Brands	Becky Cull	Lisa Catron Ernst	Arielle M. Goldberg
Karen S. Barfield	Nina Britton	Bonnie Curtis	Teresa F. Ernst	Jeanne Golliber
Amy Barhorst	Khloe Broelmann	Jennifer Damiano	Susan B. Esler	Mady Gordon*
Beverly Ann Bates	Helena Lawson Brooks	Tanya Daniel	Ms. Kathryn Evans	Michelle Goret
Deana Battle	Kelly Brown	Courtney Dauer	Kimber L. Fender	Colleen A. Grant
Ms. Pamela A. Battle	A. Christine Browning	Althea M. Davis	Trish Fielden	Chandra Gravely*
Kelly L. Beatty	Stacey Browning	Ann Davis	Elizabeth Fikes	Nancy Grayson
Gale Beckett*	Laura Brunner	Kathy DeBrosse	Ms. Renee S. Filiatraut	Vicki C. Green
Doreen Beckham	Trish Bryan	Rose Marie Deibel	Kathy Fish	Linda Greenberg
Cindi Bedinghaus	Eileen M. Budo	Catherine DeWeirdt	Barbara Fitch (Mrs. Stona)	Donna Gruber
Patricia K. Beggs	Sue Butler	M. Raquel Diaz de Prego	Lisa D. Flacke	Liz Kathman Grubow
Cora Beimesche	Stephanie W. Byrd	Dr. Gaylene R. Dinkel	Suzanne Flanigan	Laura Guggenheim
Lois G. Benjamin	Julie Calvert	Kimberly Doebereiner	Julia Fox	JoAnn Hagopian
Pam Bernstein	Vivienne Carlson	Kelley Downing*	Mary Francis	Kathy A. Haines
Teresa Beschman	Sarah Beth Carpenter	Marjorie Drackett	Mrs. Maya Q. Franklin	Kimberly Halbauer
Carol Beyersdorfer	Martha Carroll	Aida Dragovic	Jenny Franta	Michele Halpin
Karen Bishea	Pam Carroll	Kaitlyn Driesen	Ms. Patricia A. Frey	Kristal Hambrick
Stephanie Bisselberg	Shannon Carter	Tehya Duckworth	Sue Friedlander	Robin Hamilton
Amy L. Bixel	Karen Chamberlain	Dianne Dunkelman	Jill Frondorf	Marcie Hammel
	Anne Chasser	Dr. Lisa Dunlap	Lois Fruhwirth	Lauren Hannan Shafer
			Jane Garvey	Amy Hanson
			Christine Geary*	Delores Hargrove-Young
			Sudie Geier	Linda Harlow
			Kay Geiger	Debra Hartsell
			Jodi Geiser	

continued on next page

Women's Leadership Roundtable Members, Continued

Patricia Hartsfield-Davis	Gwen Kirles	Ann Michael	Jeanette Richards	Deborah Smith
Teri Haught	Lisa Knutson	Kathleen W. Miller	Camille A. Richardson	Stephanie Smith
Barbara Hauser	Ms. Claudia S. Kohlman	Catherine Millette	Linda Richey	Joy Snyder
Deborah M. Hayes	Kelly Kolar-Eyman*	Danute Miskinis	Kimberly Riddle	Kelly Soller*
Melanie Healey	Dale Kozma	Peg Moertl	Ellen Rieveschl	Alice Sowers
Mrs. Cheryl L. Heilman	Colleen Kraft	Krista Marantos Monnin	Mary Riffe	Amy Spiller
Mrs. Anne P. Heldman	Mrs. Krystyna Krawczyk	Mrs. Michael Moore	Kendra Riley	Sarah St. Clair
Vicki Herche	Allison Kropp	Mrs. Mary Morand	TaraLyn Riordan	Mary Stagaman
Michelle Hershey*	Jule Kucera	Emily Morgan	Nancy Roberto	Terry Starcher
Tillie Hidalgo Lima	Virginia Kuertz	Victoria Morgan	Cynthia S. Robertson	Delane Starliper
Erika Hinebaugh	Cynthia Lamb	Gwen Morris	Ms. Jean Lydon-Rodgers	Elizabeth Stautberg
Teresa Hoelle	Jamie Landheer	Connan Morrissey	Rachael Rodman	Paula Steiner
Katy Hollister	Dorothea Langsam	Anne E. Mulder and Rebecca M. Gibbs	Vicki Dapper Rogers	Melissa Stevens
Julie Holt	Jennifer Larkins	Michele Mullins	Cheryl Rose*	Erin A. Straits
Sandra Holzgen	Kei Lawson	Sandra Murawski	Dr. Jan Rosenbaum Sass	Tina Surface
Patty Hord	Wendy Lea	Sarah Avila Murphy	Joy Herald Rutan	Jennifer Suttles
Jennifer Houser	Andi Levenson Young	Christina Neises	Martine Ryan	Nancy Swanson
Katherine A. Howard	Wendy Kurtz Levine	Naomi R. Nelson	Marie Laure Salvado	Carol G. Talbot
Cheryl Hoying	Sue S. Lewis	Tara Newbould	Katrina Sammons	Karla Tankersley
Megan C. Hudson	Carrie Lichter	Valerie L. Newell	Linda Sandidge	Teresa Tanner
Sherry L. Hughes	Janice Liebenberg	Maureen Normoyle	Ann Sandman	Carolyn Tastad
Laura L. Humphrey	Terry L. Lindquist	Molly North	Ann Santen	Cenona A. Taveras
Alissa Huschart	Amanda Lucas	Elizabeth Olson	Martha Cutright Sarra	Lisa Tecklenburg
Vanessa Indriolo Vreeland	Cynthia Lyons	Elizabeth Osborne	Lisa Sauer*	Gretchen Terhar
Maite Iraolagoitia	Karen F. Maier	Debbie Ostendorf	Aude Scheibli-Roumegoux	Rebecca Terrell*
Monica Jackson	Deborah P. Majoras	Jessica Overley	Kris L. Scheihing	Jacqueline M. Terry
Lydia Jacobs-Horton	Carmie Maloney	Colleen Oxbrough	Luann Scherer	Jennifer Terry
Nalini Jagannath	Mrs. Rhonda Manley	Mildred Pacheco	Rosemary Schlachter*	Carol Teter
Marianne James	Michele A. Mansfield	Mrs. Jacqueline G. Parker	Heather Schmidt	Amy Thompson
Heidi B. Jark	Peggy Ann Markstein	Francie Pepper	Denise Schnieders	Jan Timmel
Denise Jeavons	Susan Marmo	Judy Pepler	Ann G. Schoen	Dr. Laura Trice
Susan L. Joa	Teresa Martinez	Barbara Perez	Digi Schueler*	Maria E. Troyano, Ph.D.
Margie Johnson	Keri Matthews	Judy Pershern	Dr. Ann E. Schulte	Faith Tupman
Shannon Johnson	Jessica Mavridoglou	Audrey Pettengill	Stephanie M. Schumacher	Barbara A. Turner
Julie D. Jones	Kathleen Mays	Lynn Phillips	Ann Schwentker	Monica Turner
Michelle Jones	Debbie S. Mazziotti	Elizabeth Pierce	Ann M. Schwister	Jacqueline Tye
Della Jordan	Holly Mazzocca	Erica Pontius	Robin Seaborough	Karen Bruner Upright
Cheryl Jorgenson	Mrs. Mary McFadden Lawson	Lori Poole	Cristina Seda-Hoelle	Nina Urban-Hettich
Elizabeth Jukic	Candace McGraw	Dr. Monica Posey	Emily Seitz Pawlak	Ellen van der Horst
Chris Kahn	Jill McGruder	Julia Poston	Kathy Selker	Kelly Vanasse
Alisha Kalb	Marybeth McManus	Jenny Powell	Barbara Sferra	Louise Vaughan
Anneke Kaminski	Kathryn McMullen	Emily Praeter	Elizabeth Shaughnessy	Bennette Veals
Debra Kaput	Shelly McNamara	Lauri Prescott	Robin S. Sheakley	Mary Vigilante
Ellen M. Katz	Susan McPartiin	Elizabeth Radke	Stephanie Shepherd	Kim M. Vincent*
Helen Kemp*	Lindsay H. McShane	Marty Ragland	Valarie L. Sheppard	Ms. Pamela J. Viscione
Angela Noelle Kenney	Mary Ann Meanwell	Maribeth S. Rahe	Belinda J. Sherman	Cari Vonier
Caroline Key	Angela Meehan	Mary Ran	Julie Shifman	Yvonne Gray Washington
Sanyika Keyes	Susan M. Meeks	Kim Ravenhall	Karen Showell	Conni Weaver
Sabina Khemchandani	Lisa Mell	Johnna Reeder	Laura Shroat	Pamela Weber
Pam Kimmel	Isabel Mendez	Corinne Reich	Lorri Simpson	Karen Weinberg
Marcene C. Kinney	Kathryn E. Merchant	Gretchen Reifsnnyder	Stephanie Sisak	Susan E. Weldishofer
Alecia Kintner	Jill P. Meyer	Pamela Reis	Lydia Sites	Jane Welling
Jackie Kirkpatrick	Michelle Meyer	Patricia Pease Rice	Sandra Slusarczyk	Alice Weston

continued on next page

Women's Leadership Roundtable Members, Continued

Barbara Weyand	· Kristine Wickemeier	· Kristi Clement Williams	· Lisa Wolter	· Susan Zaunbrecher
Susan E. Wheatley	· Kathy Wilkinson	· Michele Williams	· Rebecca S. Wood	· Alison Zimmerman
Chiquita V. White	· Diana J. Willen	· Carole Winchester	· Ms. Michelle A. Wright	· Jaculin Zurlinden
Juanita White	· Felicia Williams	· Kelly L. Wittich*	· Felicia Thornton Wymore	· <i>*Denotes Steering Committee Member</i>
Gina R. Whittle	· Jenny Williams	· Jodi Woffington*	· Anne M. Zaring	



Smokey Robinson with CAALA members

2017 CIRCLE OF AFRICAN AMERICAN LEADERS FOR THE ARTS

The Circle of African American Leaders for the Arts brings together men and women in our community who believe that the power of the arts helps bridge cultural divides. Members support ArtsWave at the leadership level.

Anonymous (2)	· Mrs. Verna E. Coleman-Hagler	· Delores Hargrove-Young*	· Michael Moore	· Mr. Leroy Staples
Josef Allen	· Jeffery Cook	· Teresa Hoelle and Scott Provancher	· Mr. Terence Moore	· Ms. Cenona A. Taveras and Dr. Eric Beatty*
Cathy Bernardino Bailey	· Hideo and Sherri Core	· Myron and Sherry Hughes*	· Mr. Samuel Moore Jr.	· Sherman L. Taylor II
Juan Bailey	· Martine Dunn	· Danielle Ivory	· Mr. Shawn T. Newman	· Mr. Pieter D. Theron
Beverly Ann Bates	· Mr. and Mrs. Toriano and Maya Franklin	· Monica Jackson	· Stefanie A. Newman	· Joyce and Howard Thompson
Deana Battle*	· Mr. Kala Gibson*	· Raymond A. Jeter	· Mrs. Jacqueline G. Parker	· Barbara A. Turner
Ms. Pamela A. Battle	· Lisa C. Goines	· Ms. Della R. Jordan	· Norman Phillips	· Monica Turner
William Beckham	· Dr. Camille Graham	· Mr. Gary C. Joseph	· Terrence Porter	· Bennette Veals*
Mr. Tysonn Y. Betts	· Melvin and Chandra Gravelly*	· Helen and Darius Kemp	· Awadagin Pratt	· Ms. Pamela J. Viscione
Roslyn Bolden	· Regina Gray	· Angela Noelle Kenney	· Mr. Camryn J. Prevost	· Lee Walton
Sharon Bond	· Mr. and Mrs. Michael Gruber	· Sanyika Keyes	· Dr. Jeanette Richards	· Mark and Noël Walton
Stephanie Wright Byrd	· Chet Guess	· Kei Lawson	· Camille A. Richardson	· Dennis and Yvonne Washington
Gerald Cantey	· Mrs. Agnes Godwin Hall and Mr. Darin C. Hall	· Janice Liebenberg	· Kendra Riley	· Chiquita V. White
Keris Clark	· Robin Hamilton	· Mrs. Rhonda Manley	· RUGiving2	· Juanita White
Linda Clement-Holmes		· Randy Martinez	· Ms. Audrey L. Rossman	· Felicia Williams
Lela and Maurice Coffey		· Mr. Anthony L. Mathis	· Linda Sandidge	· Michele Williams
John Coleman		· Demetrice McClurkin	· Mr. Carl Satterwhite	· Mr. and Mrs. Stanford T. Williams, Jr.
			· Lydia Sites	· Ms. Michelle A. Wright
			· Mr. Dwight T. Smith	· <i>*Denotes Steering Committee Member</i>
			· Mr. and Mrs. Edgar L. Smith, Jr.*	
			· Albert and Liza Smitherman	



YP Committee

2017 YOUNG PROFESSIONAL LEADERS

Young Professional Leaders are dedicated to cultivating awareness of, encouraging engagement in and promoting philanthropy for ArtsWave with the next generation of community leaders. Membership is open to Young Professional leaders who contribute \$500 or more each year to the ArtsWave Community Campaign.

Anonymous (1)
 Manuel Acosta
 Eric Aho
 Barbara Ahrman
 Douglas Alcorn
 James Allard
 Zachary Alter
 William Andes
 Eric Barrett
 Peter Bergman
 Mr. Michael Betz*
 Ms. Shannon Bobbert
 Kevin Bock
 Bob Bonder*
 Craig and Leslie Bowman
 Nina and Frederick Britton
 Kyle Brown
 Mr. Benjamin "Rocky" Byington
 Sarah Beth Carpenter*
 Martha and Kevin Carroll

April Casey
 Carmie Chambers
 Joon Cho
 Lyhan Christophel
 Keris Clark
 Surilda Clark-Sturm
 Teresa Couch
 Mariel Cox
 Michael Crawford
 Brendon and Becky Cull
 Jessica David
 Ms. Althea M. Davis
 Linda Dennis
 Justine DiNapoli
 Dr. Gaylene R. Dinkel
 Ryan Dirks
 Mrs. Aida Dragovic
 Kaitlyn Driesen
 Thad Driscoll*
 Charles and Wendy Drucker

Blaise Durio
 Scott Durkee
 Matthew Edelbrock
 Michael Ehrman
 Abigail Estrada-Bey
 Jon and Katie Feldkamp
 Lisa D. Flacke
 Ryan and Suzanne Flanigan
 Joseph Fleming
 Derek Flynt
 Mary Francis
 Mr. and Mrs. Toriano and Maya Franklin
 Jenny Franta
 Dusty Garner-Carpenter
 Christine Geary
 Adam Gelter
 Megan Gill
 Arielle M. Goldberg and William D. Meredith

Luisa Gonzalez
 Richard M. and Colleen A. Grant
 Ms. Vicki C. Green
 Daniel Griesemer
 Mr. and Dr. Grisemer
 Brian Haberman
 Robin Hamilton
 Mr. John Hatjopoulos
 Barbara Hauser
 Erin (Riggs) Hennessey
 Nicole Herron
 Teresa Hoelle and Scott Provancher
 Mr. Michael J. Hoffmeister
 Joseph Hoskins
 Katherine A. Howard
 Megan C. Hudson
 Craig Jones
 Jillian Jones
 Adam and Chris Kahn

John Kaminski
 Kate and Michael Kennedy
 Angela Noelle Kenney
 Caroline Key
 Sanyika Keyes
 Amit and Sabina Khemchandani
 Gwen Kirles*
 Stephanie Knight
 Kush Kotecha
 Angela Krites
 Matthew Krumanaker
 Steven Langguth
 Joaquin Lastra
 Jennifer Laugle
 Kei and Shannon Lawson
 Robert Lesan
 Miranda Lewis
 Janice Liebenberg and Andy Holzhauser
 Daniel Luegering
 Matthew Madges
 Teresa and Randy Martinez
 Paul Martini
 Nicholas and Jessica Mavridoglou

Andrew Maynard	Jessica Overley	Robin Seaborough	Drew Walters	John & Kira Zimmerly
Debbie S. Mazziotti	Katie Owens	Emily Seitz Pawlak	Lee Walton and Allison Cox	Robert and Rania Zimmerman
Holly and Louis Mazzocca	Nate Paszczykowski	Nancy Sevieux	Amy Weber	Allison Zurlinden
Michael McCarren	Carlos Perez	Mansi Shah	Amy Wiles	<i>*denotes ArtsWave YP Committee member</i>
Bianca and Shawn McCartt	Danielle Perkins	Lixin Shen	Kevin Wilhite	
Amanda M. McDonald	Lauren and Justin Peter	Andrea Shepard		
Michael McKiernan	James Plum	Timothy Shepherd		
Joshua and Lorionna Metzger	Andy and Lori Poole	Christopher Shumate		
Ross Meyer	Mr. Camryn J. Prevost	John Sieg		
Mrs. Catherine M. Millette	Vivek Priyadarshi	Erik Sieve		
Ms. Hatsuki Miyata	Mr. Sundar Raman and Ms. Ramya Santhanam	Jacob Sieving		
Lindsey Moneyemaker	Kimberly Ramundo	Lydia Sites		
Kongolo Mulumba	Nicole Rasmussen	Donald Slavik		
Joe Muraca	Aaron Reiff	Alice Sowers		
Eric Murphy	John Richardson	Sarah St. Clair		
Sarah and Christopher Murphy	Ryan Richey	Joel and Lisa Stone*		
James Murray	Brian Rigby	Timothy Strayer		
Laura Murschel	Matthew R. Riley	Ryan Swisher		
Robert Nemeth	TaraLyn Riordan	Chad Taake		
Jennifer and Kirby Neumann	Jessica Rohrkemper	Catherine Tamarelli		
Christopher Newcomb	Michael Roll	Lisa Tecklenburg		
Joseph Nichols	Scott Rose	Paul and Tricia Tomich		
Kelly O'Brien*	Benjamin Schlagheck	Kelley Tracy*		
Elizabeth and Walter Osborne	Denise A. Schnieders	Jacqueline Tye		
	Brian Schultz	Daniel Tyszka		
	Stephanie M. Schumacher	Laura R. Vedder		
	William Schumacher	Jeremy Viltro		



FUELING CREATIVITY AND LEARNING

Project38 is an innovation in arts education by the Cincinnati Shakespeare Company. Throughout the school year, CSC teaching artists worked with area schools to create multi-disciplinary interpretations of all of Shakespeare's 38 plays. Students interpreted the plays through dance, music, film, digital media and more. It all culminated in the Project 38 Festival, where students shared their projects with peers, community members, family and friends. The entire program was free of charge to students and schools.

2017 Campaign Special Thanks

Recognition goes to the following companies, organizations and individuals for additional support:

- **Fifth Third Bank**, which gave a \$20,000 matching grant to challenge individuals to give during ArtsWave campaign events and in the run-up to the finale.
- **The Cincinnati Reds**, for being an incredible partner and supporter of the arts that make our region an amazing place to live.
- **FC Cincinnati**, for their partnership and commitment to building a connected community in Greater Cincinnati.
- **Macy's**, for yet another amazing Macy's Arts Sampler weekend, with regional support from **United Dairy Farmers** and mainstage support from **Dewey's Pizza**.
- **Accenture**, **Cincinnati Arts Association staff**, and **Enquirer Media** for their continued support of CincySings. Many thanks go to our Finals host, **Drew Lachey**, our Semi-Finals host, **JonJon**, and our amazing Semi-Finals and Finals judges – **Janelle Gelfand**, **Bob Herzog**, **Robyn Lana**, **D. Lynn Meyers**, **John Morris Russell**, and **Kathy Wade**.
- **Fifth Third Bank**, for their continued sponsorship of ArtsWave Tidal: Arts x Tech, with additional support from **Vantiv**, **Cintrifuse**, **The Brandery**, **StartupCincy**, and **CincyTech**.
- **Enquirer Media**, **Cincinnati Business Courier**, **Cincinnati Parent Magazine** and **Family Friendly Cincinnati** for their valued media reach and much appreciated support throughout the Campaign.
- **Rhinegeist**, for hosting the ArtsWave Campaign Finale Celebration.
- **World Pac Paper**, **OneTouchPoint**, **Jeff Thomas Catering**, **A Catered Affair**, **Sterling Cut Glass**, **Memorial Hall**, and **Urban Artifact** for providing significant in-kind support.
- **Listermann Brewing Company** and **Blank Slate Brewing Company**, for their continued partnership on ArtsWave's collaboration beer, **Roots**.
- **Game Day Communications**, our PR partner in helping to leverage our local media presence.
- **Stanard Design Partners**, our agency partner in producing our Campaign communications and this annual report.
- A huge thank you to **all the arts organizations, large and small**, that provided venues, activities, speakers, tickets and so much more to make the ArtsWave Community Campaign and events so successful!
- Thank you to the nearly **1,000 people who volunteered their time and talent** to raise a record-high level of support for the arts in Greater Cincinnati, and to the **38 individuals on our grant review committees** who spent hundreds of hours reviewing applications and making recommendations for impact-based grants throughout the region.

ENDOWMENT PARTNERS



Future Endowment, Bequest and Planned Gift Commitments

Anonymous (10 donors)

Henrietta Barlag

(Cincinnati Ballet, Cincinnati Landmark Productions, Cincinnati May Festival, Cincinnati Opera, Cincinnati Playhouse in the Park, Cincinnati Shakespeare Company, Cincinnati Symphony Orchestra, Ensemble Theatre Cincinnati and Know Theatre)

Florence K. Bean

Lee Ault Carter

Raymond R. and Marylyn Clark

A. Burton Closson, Jr.*

Charlene F. Combs

Anne Levin DeLyons

Caroline S. DeMar

Susan L. Dorward

Joseph H. and Louise Head

Frank T. Hamilton, Jr. Trust

Mary McCullough-Hudson and Greg Hudson

Isabelle F. Hugo

(Taft Museum of Art)

Susan M. Ingmire

Mrs. Morse Johnson

Susan J. Kellogg

Willard and Patricia Kissell

Patrick M. Korb

Susan S. Laffoon

Whitney R. and Phillip C. Long (Taft Museum of Art)

Christine Gould Meyer

Marjorie Motch

James W. and Anne Nethercott

T. Stephen and Lynn Phillips

Mr. and Mrs. Richard H. Rosenthal

Ruth Rounding

Emalee Schavel

Neal G. Schulte, CPA/CFP

Mark and Jane Serrienne

Elizabeth C.B. and Paul G. Sittenfeld*

Mary Stagaman

Mr. and Mrs. John Steinman

Carol G. Talbot

Sallie Robinson

Wadsworth (ArtsWave and Taft Museum of Art)

Drs. Barry D. & Karen Britt Walker (To fund arts opportunities for disadvantaged youth)

Paul H. and Jo Ann T. Ward (Cincinnati Playhouse in the Park)

Harris K. and Alice F. Weston

Gene M. Wilson

Legacy and Endowment Gifts

The Citizens of

Cincinnati, to match the original endowment gift of Charles P. and Anna Sinton Taft, which established the Cincinnati Institute of Fine Arts in 1927

Anonymous (Eight donors to ArtsWave)

Anonymous (In honor of the 75th Anniversary of the Cincinnati Institute of Fine Arts)

Anonymous (Cincinnati Symphony Orchestra)

Anonymous (Cincinnati Art Museum)

Anonymous (Two donors, Cincinnati Opera)

Anonymous (Three donors, Taft Museum of Art)

Anonymous

(Taft Museum of Art, in support of on-going garden expenses)

Elise Eaton Allen Performing Arts Fund*

Estates of Blanche and Rebekah Alter (Cincinnati Symphony Orchestra and Taft Museum of Art)

Mrs. Robert J. Amidon

Claire U. Atkins Trust

Francis A. Benus (Cincinnati Symphony Orchestra)

Alma Betscher and Edna B. Outcalt Memorial Fund (Cincinnati Symphony Orchestra)

Estate of Thomas F. Buck

Joseph Burton

Lee Ault Carter*

(To establish a Fund for ArtsWave at the Greater Cincinnati Foundation)

W. Rowell Chase

Estate of Laura L. Clark

Lucinda Closson Memorial Fund

Stanley and Frances D. Cohen (Taft Museum of Art Lecture Series)

Estate of Betty J. Dannenfelser

Anne Elkins Didrichsen, in memory of Felix and Weta Mae Elkins (Cincinnati Playhouse in the Park)

Estate of Edwin P. Dundon

Estate of Helen T. Ehlers (Taft Museum of Art)

Estate of William Donald Ehlers

Estate of Margaret Embshoff

Edith T. Emerson

Estate of Thomas J. Emery (Cincinnati Symphony Orchestra)

Estate of James M. Ewell

Estate of Natalie Feld, in memory of Eleanor Feld (Cincinnati Opera and Cincinnati Institute of Fine Arts)

Franklin L. Folger Trust

Herbert G. French

Estate of Ruth Friedman

John W. Gantt, Sr.

Elizabeth D. Goldsmith

Estates of Dr. Ralph Good and Ms. Alice M. Good

Emma Freund Gwinner Trusts

Estate of Helen B. Hagner

Joseph B. Hall

Estate of Mary Hanna (Cincinnati Symphony Orchestra)

Estate of Eleanor Hazelton

Martin Hemsworth Estate

John Z. Herschede

John L. Holden

Estate of Ray Huseman

Estate of Mr. & Mrs. Louis John Johnen

Estate of Edmund L. Jones

Estate of Bertrand B. Kahn (To fund college scholarships)



Cincinnati Opera in the Park

Girl playing the trombone at Macy's Arts Sampler
Photo Credit: Mikki Shaffner

Legacy and Endowment Gifts, Continued

- Cathryn Keck**
(Cincinnati Art Museum and Taft Museum of Art)
- Estate of Dolores Lucille Keppler**
- Mrs. Harold J. Kersten**
- Dorothy M. M. Kersten Trust, U.S. Bank Trustee** (Arts Services Office and ArtsWave Annual Campaign)
- Mr. & Mrs. William McD. Kite, in memory of Mrs. Lucien Wulsin** (Cincinnati Symphony Orchestra)
- Mr. & Mrs. William G. Kittredge**
- Estate of Jacqueline Klein** (Taft Museum of Art)
- Estate of Rosalie Kramer** (Cincinnati Symphony Orchestra)
- Estate of Marjorie F. Krantz**
- Estate of Margaret A. Kunz**
- Mr. & Mrs. Lawrence H. Kyte** (Cincinnati Opera)
- Estate of Betty P. Leach** (Taft Museum of Art)
- William and Marjorie Liggett Trust**
- Ms. Frances R. Luther, in memory of Howard B. Luther**
- Estate of Edgar J. Mack, Jr.**
- John L. & Ray Marie Streng Markstein**
- Estate of George Melber**
- Estate of Mildred Meloy**
- Mary L. Meyer and William D. Meyer**
- Estate of Walter H. Meyer**
- Estate of Birdie S. Neuffer**
- Estate of Philip and Barbara Nightingale**
- Estate of Louis H. Nippert** (Taft Museum of Art)
- Maurice E. Oshry** (ArtsWave and Cincinnati Opera)
- Estate of Rosalie Phillips** (Cincinnati Symphony Orchestra)
- Estates of Marion and Dorothy Rawson** (Cincinnati Art Museum and Cincinnati Symphony Orchestra)
- George Rieveschl Foundation**
- Estate of Charles Scott Riley III** (Taft Museum of Art)
- Estate of Margaret Raff Robinson** (ArtsWave and Taft Museum of Art)
- Estate of Rosa F. & Samuel B. Sachs** (To establish the Sachs Award for Artistic Excellence)
- Estate of Irene Saxton**
- Estate of Harry J. Schaleman** (Arts Services Office)
- Jacob G. Schmidlapp Trust, Fifth Third Bank, Trustee** (To match an NEA grant for children's education programs)
- Estate of Helen D. Schroeder**
- Estate of Mary Louise Schroth**
- Estate of Eugene P. Searfoss**
- Louise Taft Semple Foundation, in memory of Louise Taft Semple** (Directorship of Taft Museum of Art)
- Estate of Marjorie Senior**
- Estate of John K. Sherman**
- Estate of Joan Stark**
- Estate of Joseph L. Steiner**
- Estate of S. Charles and Sue B. Straus**
- Estate of Anna Sinton Taft** (To transform the Baum-Longworth-Taft House into the Taft Museum of Art)
- Estate of Mr. & Mrs. Charles P. Taft** (To establish the Cincinnati Institute of Fine Arts and the Taft Museum of Art and to support the Cincinnati Symphony Orchestra)
- Rosalyn Taft Gift**
- Estate of Morley P. Thompson**
- Estate of Charlotte S. Toewater**
- Estate of Patricia A. Torok**
- Estate of Betty V. Tuttle**
- Albert W. Vontz, Jr.**
- Ruth V. Wagner Trust**
- Estate of Marie Watts**
- Estate of Charlotte Froendhoff Whitmore**
- Estate of Lucile W. Weibel** (Cincinnati Symphony Orchestra)
- Estate of Ruth C. Wilkerson**
- Estate of Elinor M. Winchester**
- Estate of Dorothy C. Woodruff**
- Richard P. Windisch and Margaret Van Goeben** (Cincinnati May Festival)
- Eugene Wulsin**
- ENDOWMENT GIFTS FROM FOUNDATIONS AND OTHER ENTITIES**
- The William P. Anderson Foundation**
- Commonwealth Hotels, Inc.—The Metropolitan Club of Covington, Kentucky** (For Associate Members Endowment)
- H.G., H.F. and L.T. Dornette Foundation, Fifth Third Bank and Stan Koller, Co-Trustees** (For Associate Members Endowment Fund)
- The Thomas J. Emery Memorial**
- The Ford Foundation** (Cincinnati Symphony Orchestra)
- LKC Foundation/Mrs. Charles O. Carothers** (In honor of the 75th Anniversary of the Cincinnati Institute of Fine Arts)
- E. W., H. B. and F. R. Luther Charitable Foundation** (To establish the Associate Members Endowment Fund)
- National Endowment for the Arts** (For children's education programs)
- The L&L Nippert Charitable Foundation** (In honor of the 75th Anniversary of the Cincinnati Institute of Fine Arts)
- The Daniel and Susan Pfau Foundation** (For the Associate Members Endowment Fund)
- Robert H. Reakirt Foundation, PNC Bank, Trustee**
- Robert C. Schiff Fund**
- Eleanor and Charlie Taft Fund**
- Elsie H. Warrington, Suzanne M. Warrington and the Warrington Family Foundation, in memory of John T. Warrington** (Taft Museum of Art Exhibition Endowment)

** Through a fund at the Greater Cincinnati Foundation. We compile the above rosters with care. If your name has been omitted or misspelled, please accept our apology. We encourage you to bring any errors or omissions to our attention.*

